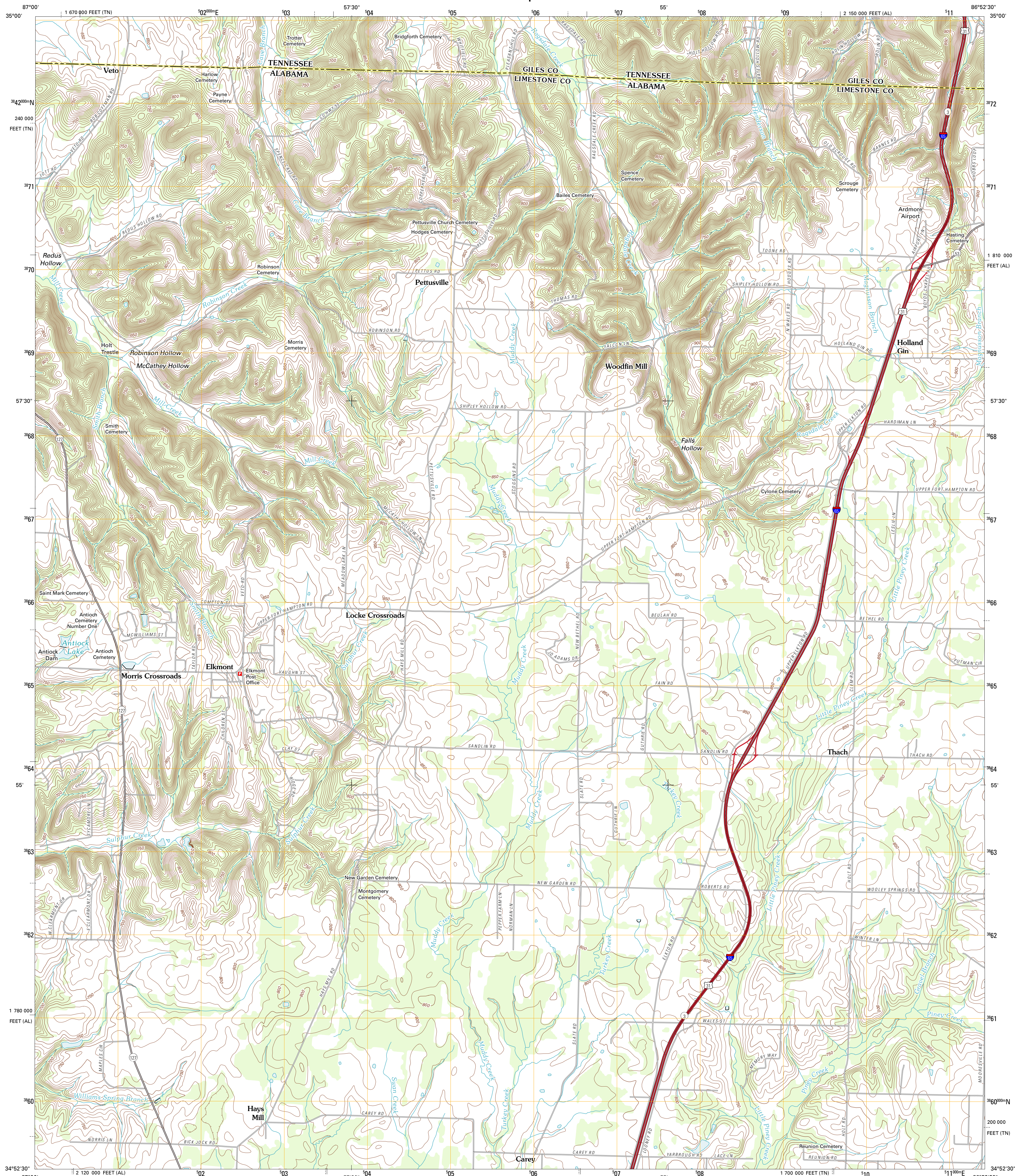




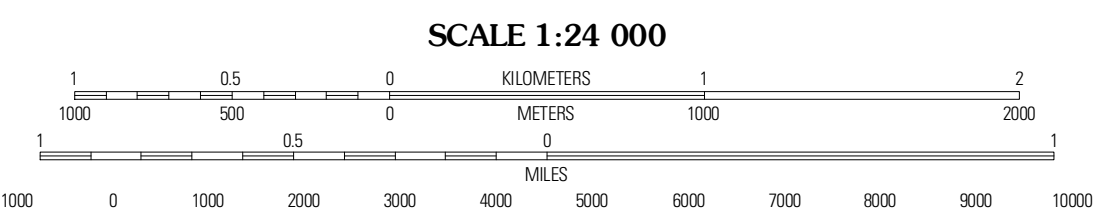
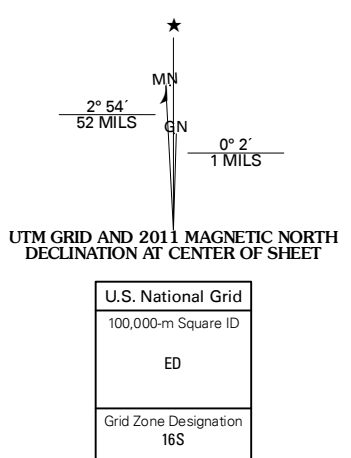
U.S. DEPARTMENT OF THE INTERIOR
U. S. GEOLOGICAL SURVEY



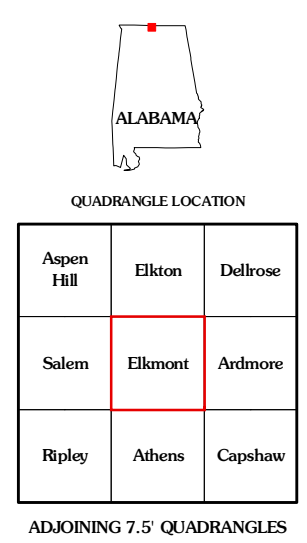
ELKMONT QUADRANGLE
ALABAMA-TENNESSEE
7.5-MINUTE SERIES



Produced by the United States Geological Survey
North American Datum of 1983 (NAD83)
World Geodetic System of 1984 (WGS84) Projection and
1 000-meter grid; Universal Transverse Mercator, Zone 16S
10 000-foot ticks; Alabama Coordinate System of 1983 (west zone), Tennessee Coordinate System of 1983



CONTOUR INTERVAL 10 FEET
NORTH AMERICAN VERTICAL DATUM OF 1988
 This map was produced to conform with the National Geospatial Program US Topo Product Standard, 2011. A metadata file associated with this product is draft version 0.6.0



QUADRANGLE LOCATION

| | | |
|------------|---------|---------|
| Aspen Hill | Elkmont | Delrose |
| Salem | Elkmont | Andmore |
| Ripley | Athens | Capshaw |

ADJOINING 7.5 QUADRANGLES

ELKMONT, AL-TN
2011