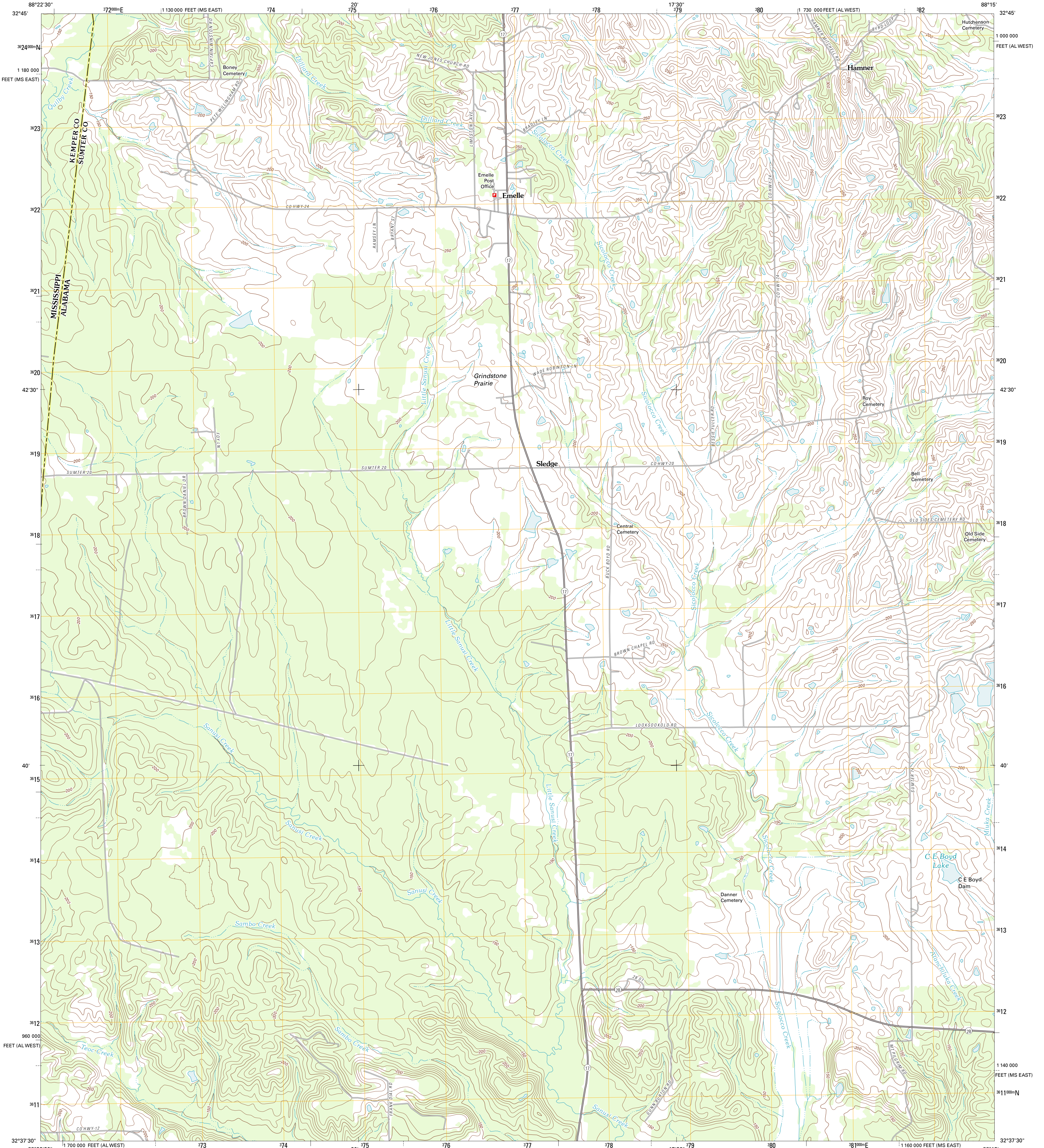




U.S. DEPARTMENT OF THE INTERIOR
U. S. GEOLOGICAL SURVEY

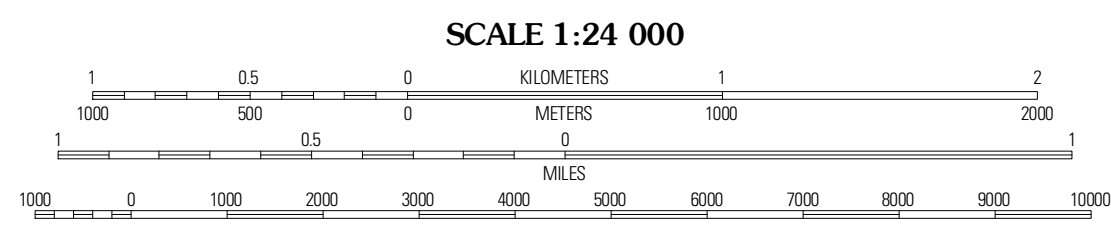
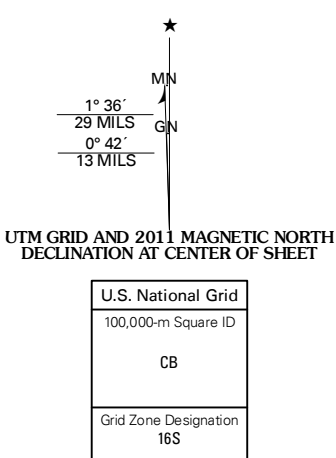


EMELLE QUADRANGLE
ALABAMA-MISSISSIPPI
7.5-MINUTE SERIES



Produced by the United States Geological Survey
North American Datum of 1983 (NAD83)
World Geodetic System of 1984 (WGS84). Projection and
10 000-foot ticks: Alabama Coordinate System of 1983 (west
zone), Mississippi Coordinate System of 1983 (east zone)

Imagery: NAIP, June 2009
Roads: ©2006-2011 TomTom
Names: GNIS, 2011
Hydrography: National Hydrography Dataset, 2009
Contours: National Elevation Dataset, 2009
Boundaries: Census, IBWC, IBC, USGS, 1972 - 2010

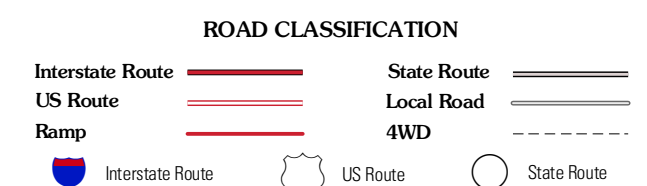


CONTOUR INTERVAL 10 FEET
NORTH AMERICAN VERTICAL DATUM OF 1988
This map was produced to conform with the
National Geospatial Program US Topo Product Standard, 2011.
A metadata file associated with this product is draft version 0.6.0



QUADRANGLE LOCATION

Scoboa	Geiger	Gainesville
Porterville	Emelle	Epas West
Tamola	Boyd	Litlington



EMELLE, AL-MS
2011

ADJOINING 7.5 QUADRANGLES