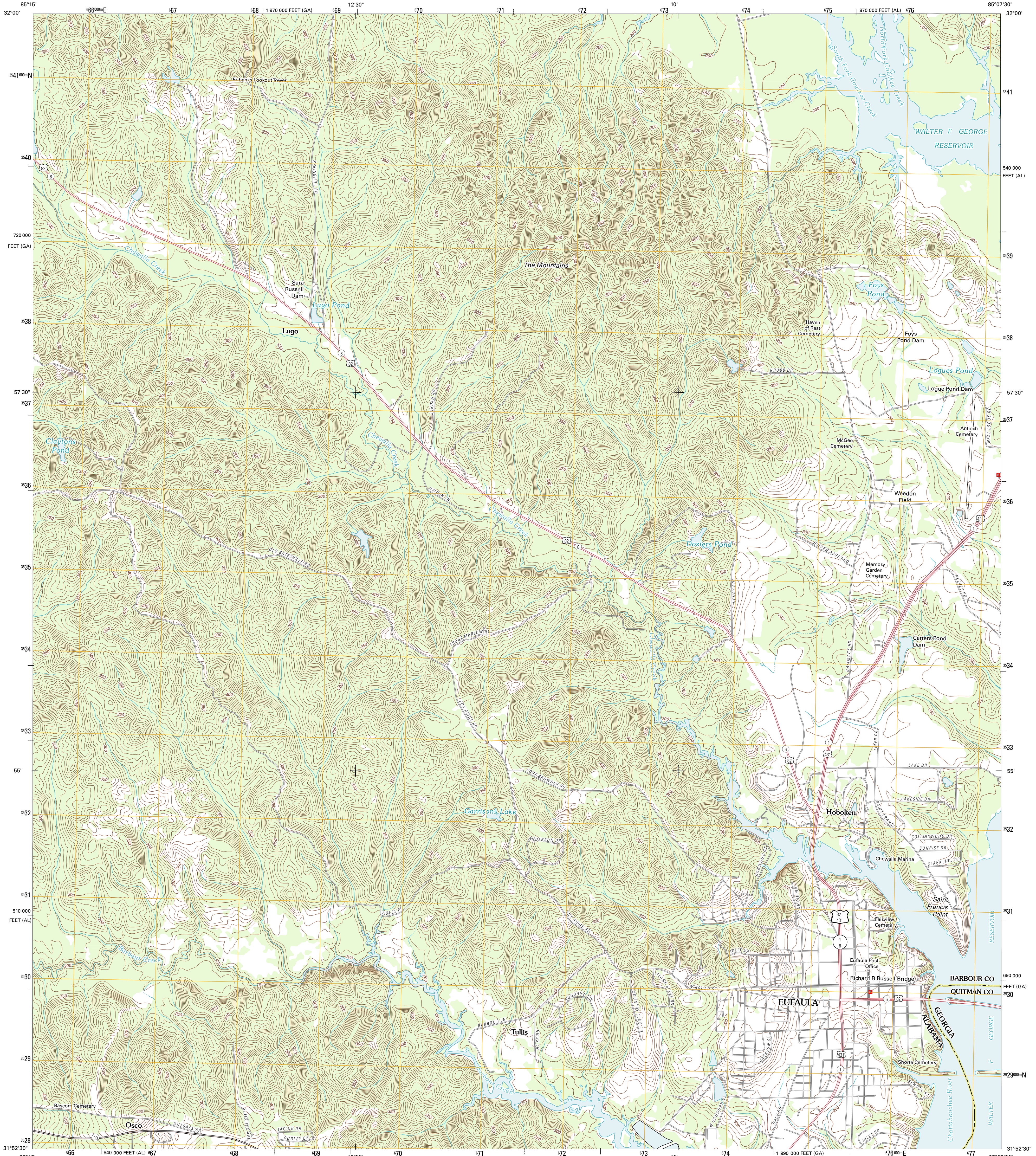




U.S. DEPARTMENT OF THE INTERIOR
U. S. GEOLOGICAL SURVEY

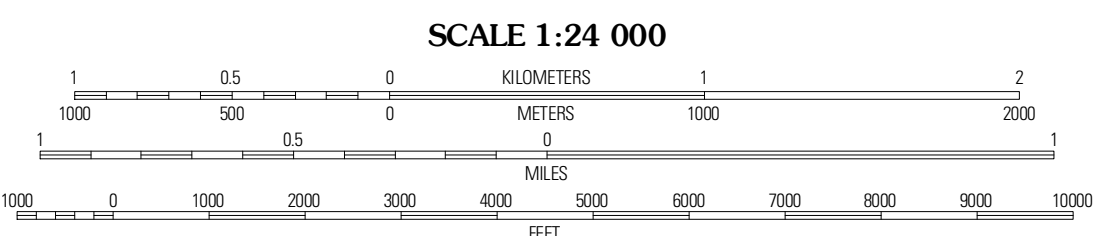
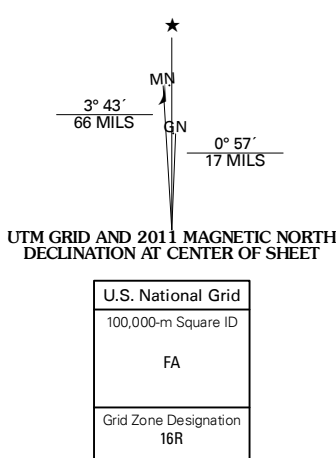


EUFAULA NORTH QUADRANGLE
ALABAMA-GEORGIA
7.5-MINUTE SERIES



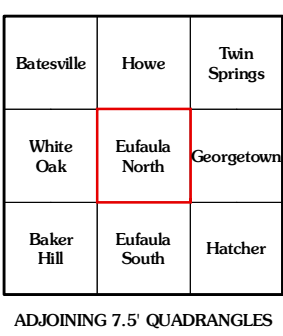
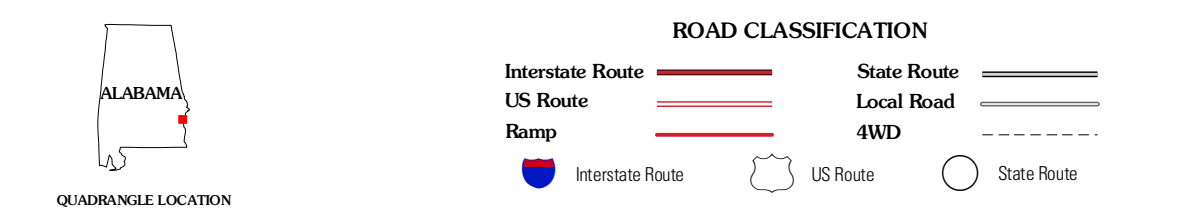
Produced by the United States Geological Survey
North American Datum of 1983 (NAD83)
World Geodetic System of 1984 (WGS84). Projection and
1 000-meter grid: Universal Transverse Mercator, Zone 16R
10 000-foot ticks: Alabama Coordinate System of 1983 (east
zone), Georgia Coordinate System of 1983 (west zone)

Imagery:.....NAIP, October 2009
Roads:.....2006-2011 TenFoot
Names:.....GNIS, 2011
Hydrography:.....National Hydrography Dataset, 2009
Contours:.....National Elevation Dataset, 2008
Boundaries:.....Census, IBWC, IBC, USGS, 1972 - 2010



CONTOUR INTERVAL 10 FEET
NORTH AMERICAN VERTICAL DATUM OF 1988

This map was produced to conform with the
National Geospatial Program US Topo Product Standard, 2011.
A metadata file associated with this product is draft version 0.6.0



EUFAULA NORTH, AL-GA
2011