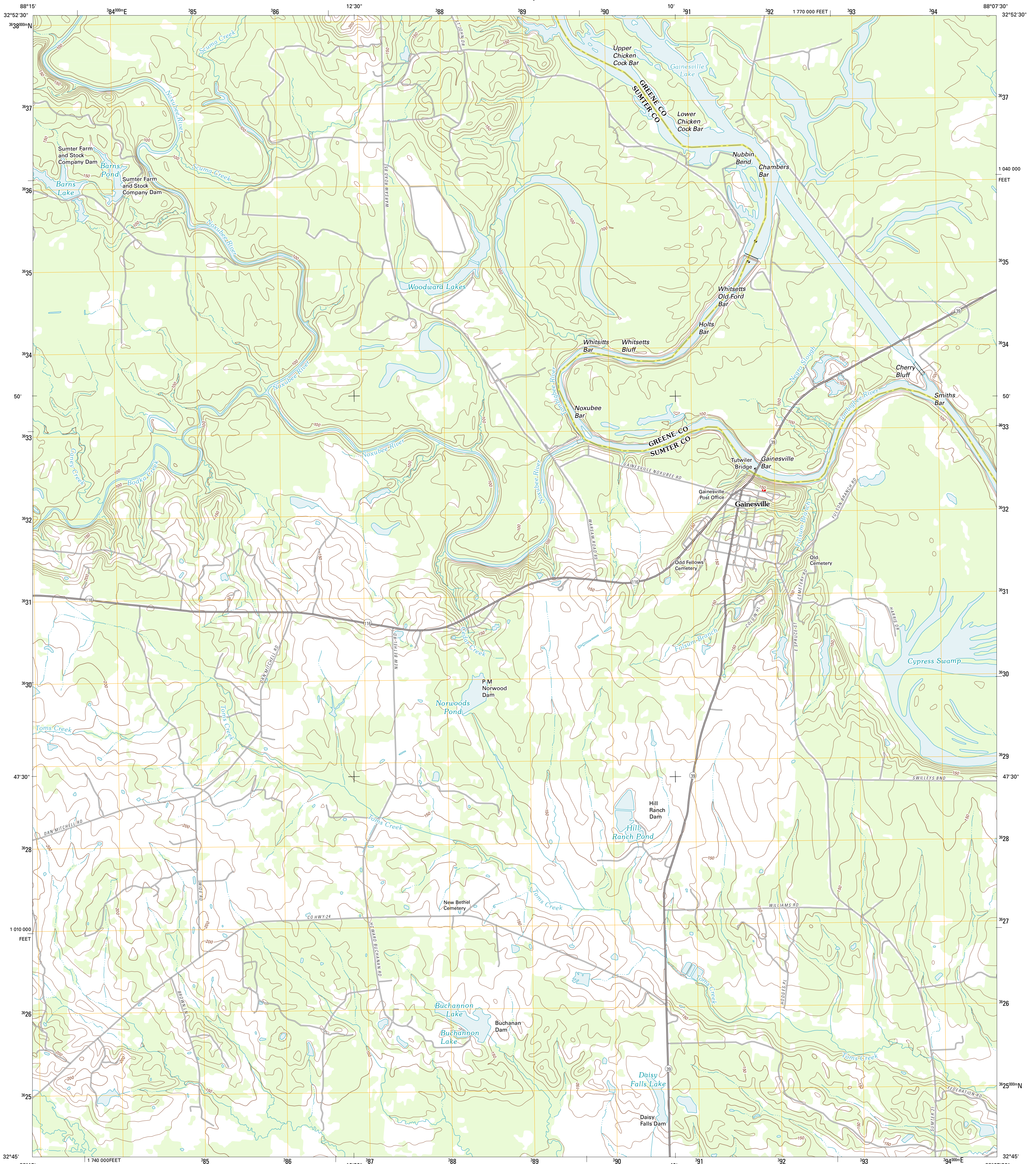




U.S. DEPARTMENT OF THE INTERIOR
U. S. GEOLOGICAL SURVEY

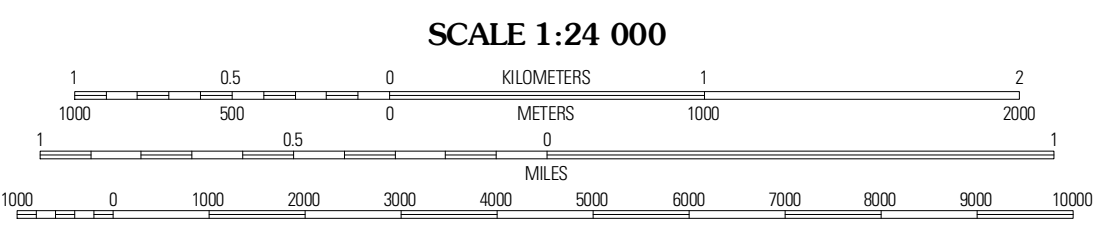
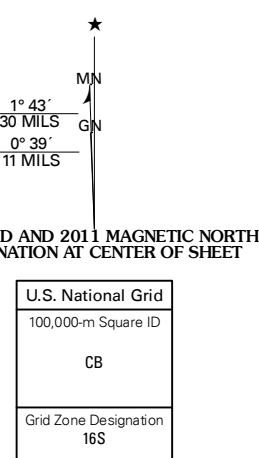


GAINESVILLE QUADRANGLE
ALABAMA
7.5-MINUTE SERIES



Produced by the United States Geological Survey
North American Datum of 1983 (NAD83)
World Geodetic System of 1984 (WGS84). Projection and
1 000-meter grid: Universal Transverse Mercator, Zone 16S
10 000-foot ticks: Alabama Coordinate System of 1983 (west
zone)

Imagery.....NAIP, June 2009
Roads.....©2006-2011 TomTom
Names.....GNIS, 2011
Hydrography.....National Hydrography Dataset, 2009
Contours.....National Elevation Dataset, 2007
Boundaries.....Census, IBWC, IBC, USGS, 1972 - 2010



CONTOUR INTERVAL 10 FEET
NORTH AMERICAN VERTICAL DATUM OF 1988

This map was produced to conform with the
National Geospatial Program US Topo Product Standard, 2011.
A metadata file associated with this product is draft version 0.6.0

ALABAMA

QUADRANGLE LOCATION

| | | |
|--------|--------------|----------------|
| Panola | Warsaw | West Greene |
| Geiger | Gainesville | Boligee |
| Emelle | Epes West | Epes East |

ADJOINING 7.5' QUADRANGLES

ROAD CLASSIFICATION

| | |
|------------------|-------------|
| Interstate Route | State Route |
| US Route | Local Road |
| Ramp | 4WD |

Legend for road types: Interstate Route (thick red line), US Route (red line), Ramp (red line with blue triangle), State Route (black line), Local Road (grey line), 4WD (dashed line).

GAINESVILLE, AL
2011