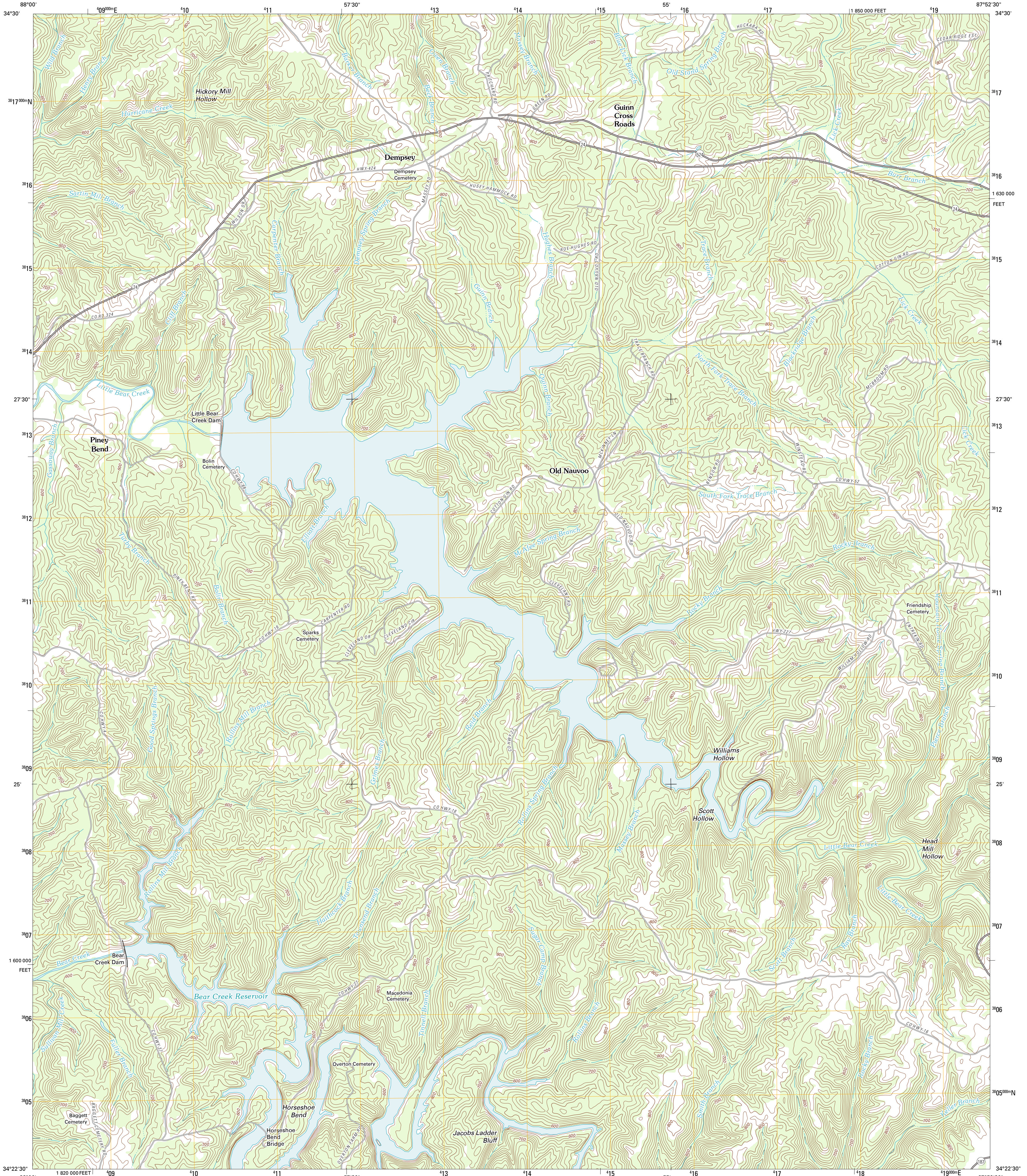




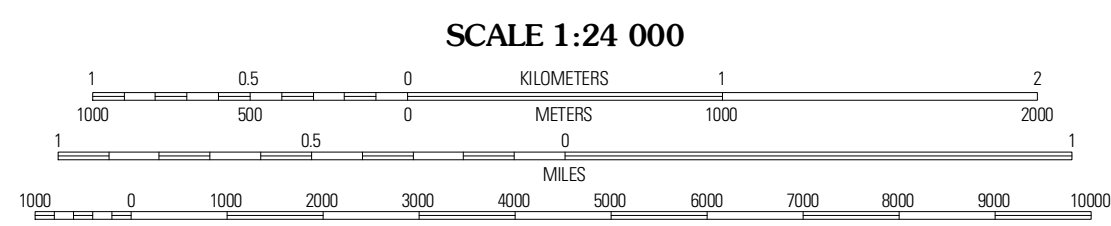
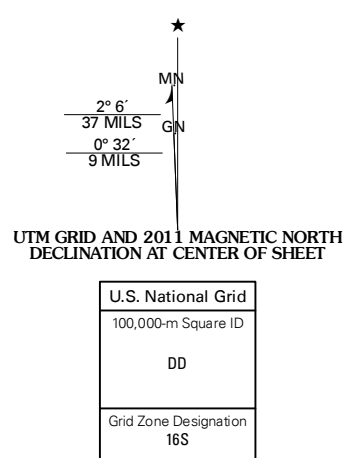
U.S. DEPARTMENT OF THE INTERIOR  
U. S. GEOLOGICAL SURVEY



GUINN CROSS ROADS QUADRANGLE  
ALABAMA-FRANKLIN CO.  
7.5-MINUTE SERIES



Produced by the United States Geological Survey  
North American Datum of 1983 (NAD83)  
World Geodetic System of 1984 (WGS84) Projection and  
1 000-meter grid: Universal Transverse Mercator, Zone 16S  
10 000-foot ticks: Alabama Coordinate System of 1983 (west zone)



CONTOUR INTERVAL 20 FEET  
NORTH AMERICAN VERTICAL DATUM OF 1988

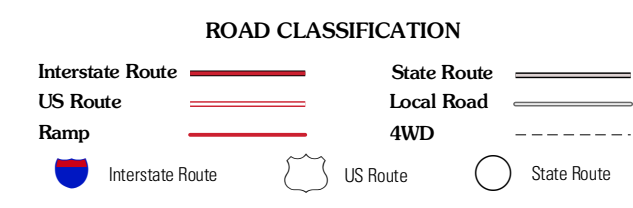
This map was produced to conform with the National Geospatial Program US Topo Product Standard, 2011. A metadata file associated with this product is draft version 0.6.0



QUADRANGLE LOCATION

Pleasant Site	Pleasant Grove	Frankford
Halloway	Guinn Cross Roads	Isbell
Vina	Hodges	Hackeburg

ADJOINING 7.5 QUADRANGLES



GUINN CROSS ROADS, AL  
2011