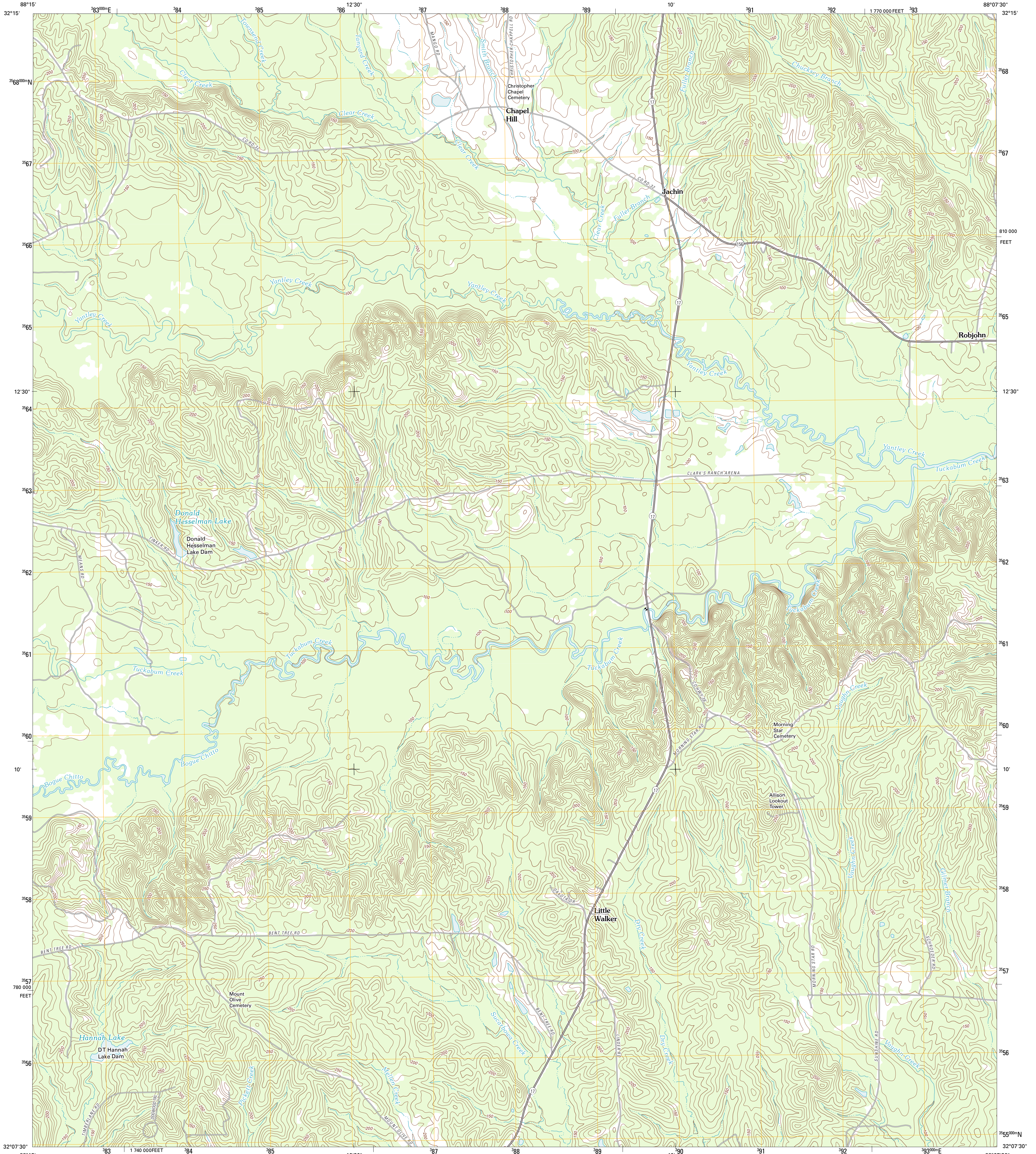




U.S. DEPARTMENT OF THE INTERIOR
U. S. GEOLOGICAL SURVEY

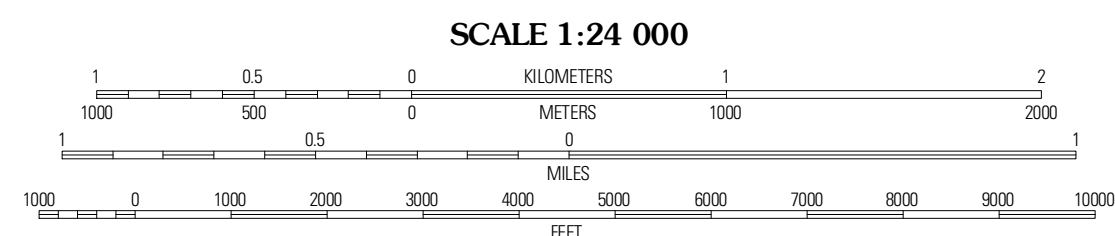
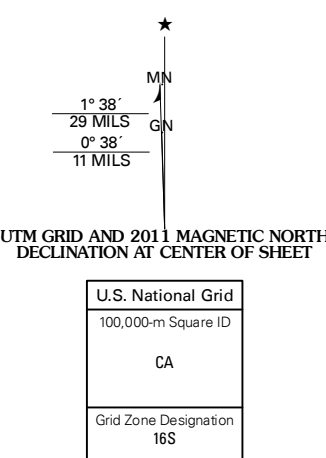


JACHIN QUADRANGLE
ALABAMA-CHOCTAW CO.
7.5-MINUTE SERIES



Produced by the United States Geological Survey
North American Datum of 1983 (NAD83)
World Geodetic System of 1984 (WGS84) Projection and
1 000-meter grid; Universal Transverse Mercator, Zone 16S
10 000-foot ticks: Alabama Coordinate System of 1983 (west zone)

Imagery.....NAIP, June 2009
Roads.....©2006-2011 TomTom
Names.....GNIS, 2011
Hydrography.....National Hydrography Dataset, 2009
Contours.....National Elevation Dataset, 2007
Boundaries.....Census, IBWC, IBC, USGS, 1972 - 2010



CONTOUR INTERVAL 10 FEET
NORTH AMERICAN VERTICAL DATUM OF 1988

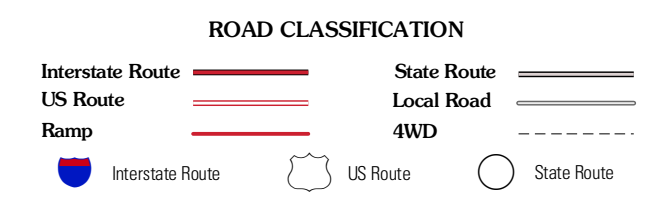
This map was produced to conform with the National Geospatial Program US Topo Product Standard, 2011. A metadata file associated with this product is draft version 0.6.0



QUADRANGLE LOCATION

Ward	Gaston	Whitfield
Liknan	Jachin	Pennington
Land	Barler	Putnam

ADJOINING 7.5 QUADRANGLES



JACHIN, AL
2011