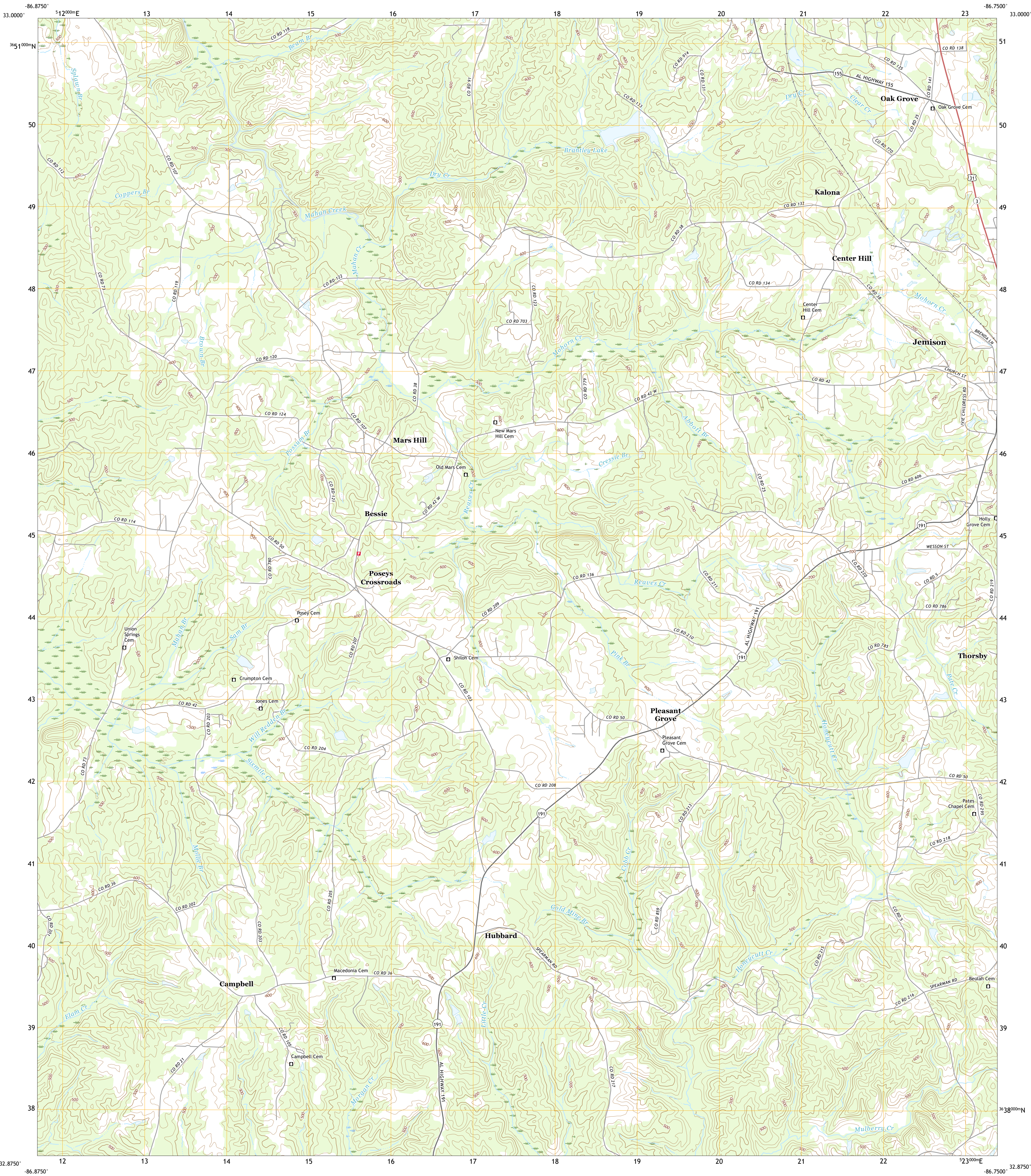




U.S. DEPARTMENT OF THE INTERIOR  
U.S. GEOLOGICAL SURVEY

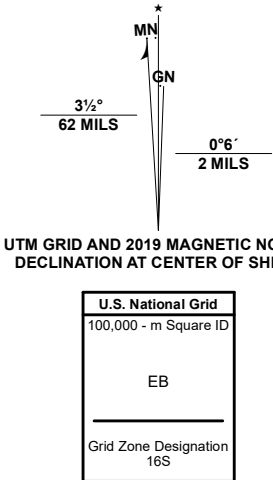


JEMISON WEST QUADRANGLE  
ALABAMA - CHILTON COUNTY  
7.5-MINUTE SERIES



Produced by the United States Geological Survey  
North American Datum of 1983 (NAD83)  
World Geodetic System of 1984 (WGS84) - Projection and  
1 000-meter grid/Universal Transverse Mercator, Zone 16S  
This map is not a legal document. Boundaries may be  
generalized for this map scale. Private lands within government  
reservations may not be shown. Obtain permission before  
entering private lands.

Imagery	.....NAIP	September	2019
Roads	.....U.S. Census Bureau	2017	
Names	.....GNIS	1980	2020
Hydrography	.....National Hydrography Dataset	1989	2018
Contours	.....National Elevation Dataset	2019	2020
Boundaries	.....Multiple sources	see metadata file	2018
Public Land Survey System	.....BLM	2019	
Wetlands	.....FWS National Wetlands Inventory	1981	



CONTOUR INTERVAL 20 FEET  
NORTH AMERICAN VERTICAL DATUM OF 1988  
This map was produced to conform with the  
National Geospatial Program US Topo Product Standard, 2011.  
A metadata file associated with this product is draft version 0.6.18



1	2	3
4	5	6
7	8	9

ADJOINING QUADRANGLES

- 1 Aldrich
- 2 Montevallo
- 3 Ozan
- 4 Randolph
- 5 Jemison East
- 6 Maplesville West
- 7 Maplesville East
- 8 Clanton West

ROAD CLASSIFICATION		
Expressway	Local Connector	
Secondary Hwy	Local Road	
Ramp	4WD	
Interstate Route	US Route	State Route

JEMISON WEST, AL  
2020

