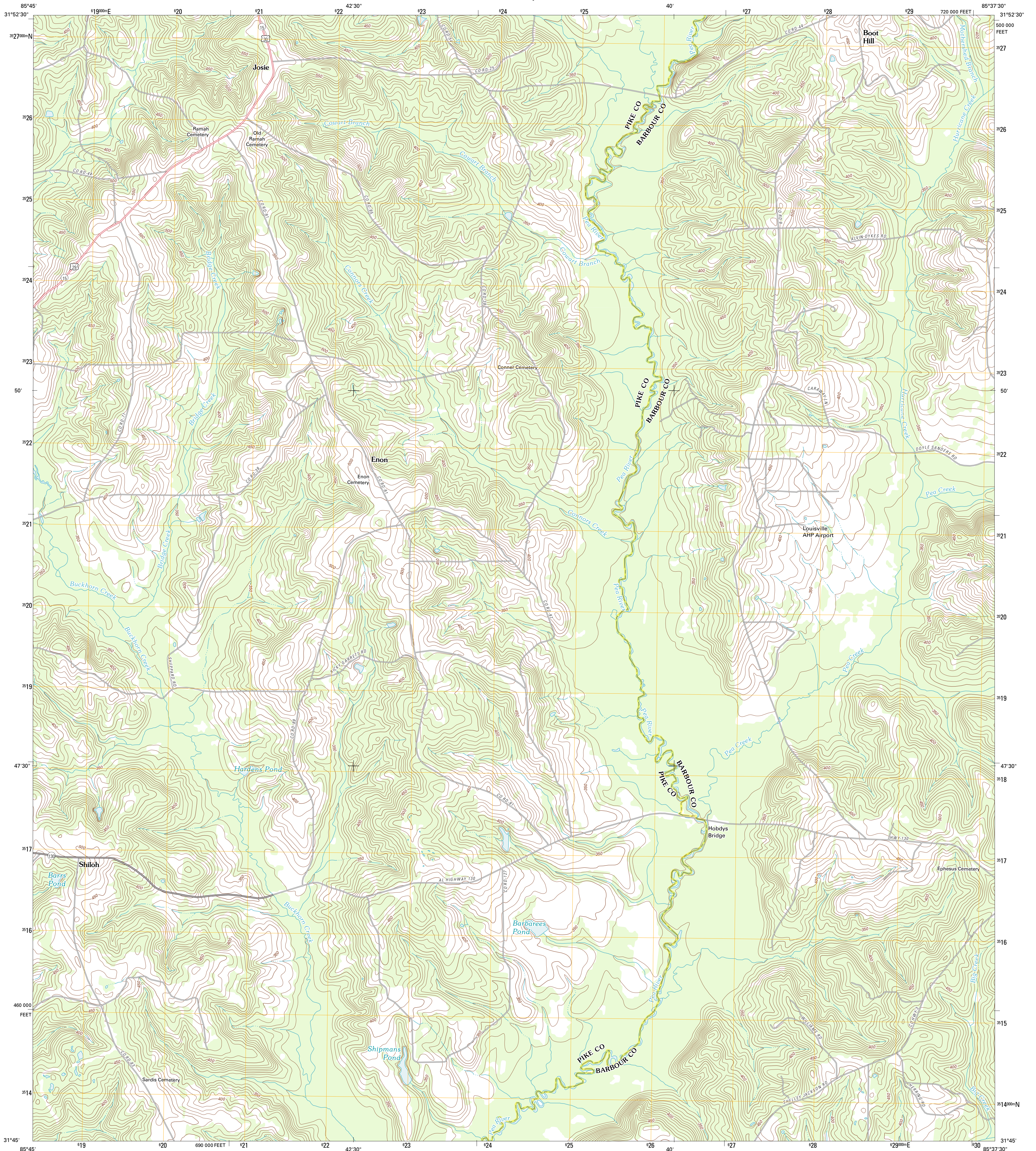




U.S. DEPARTMENT OF THE INTERIOR  
U. S. GEOLOGICAL SURVEY

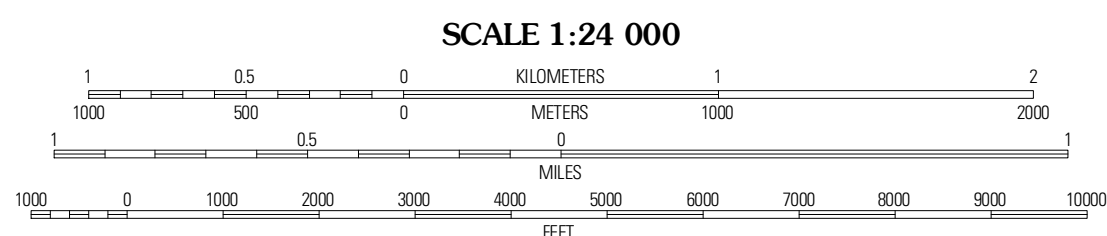
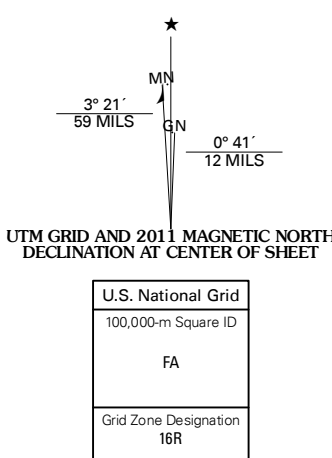


JOSIE QUADRANGLE  
ALABAMA  
7.5-MINUTE SERIES



Produced by the United States Geological Survey  
North American Datum of 1983 (NAD83)  
World Geodetic System of 1984 (WGS84), Projection and  
1 000-meter grid: Universal Transverse Mercator, Zone 16R  
10 000-foot ticks: Alabama Coordinate System of 1983 (east zone)

Imagery.....NAP, October 2009  
Roads.....©2006-2011 TomTom  
Names.....GNIS, 2011  
Hydrography.....National Hydrography Dataset, 2009  
Contours.....National Elevation Dataset, 2007  
Boundaries.....Census, IBWC, IBC, USGS, 1972 - 2010



CONTOUR INTERVAL 10 FEET  
NORTH AMERICAN VERTICAL DATUM OF 1988

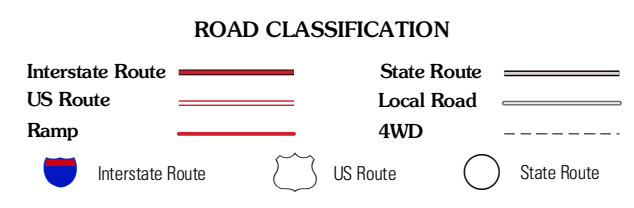
This map was produced to conform with the National Geospatial Program US Topo Product Standard, 2011. A metadata file associated with this product is draft version 0.6.0



QUADRANGLE LOCATION

Saco	Perote	Mount Andrew
Banks	Josie	Louisville
Brundidge	Elmville	Clio

ADJOINING 7.5 QUADRANGLES



JOSIE, AL  
2011