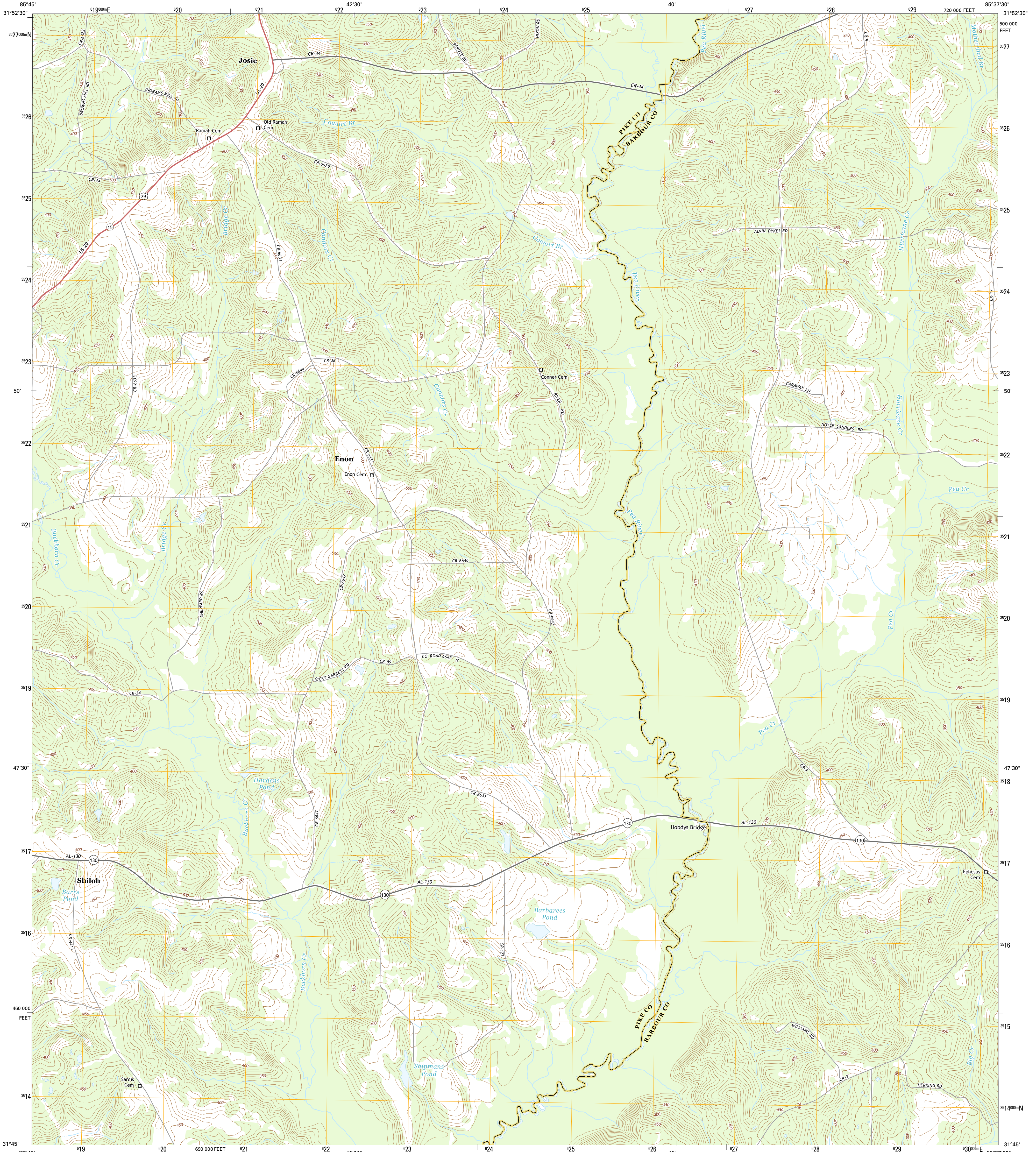




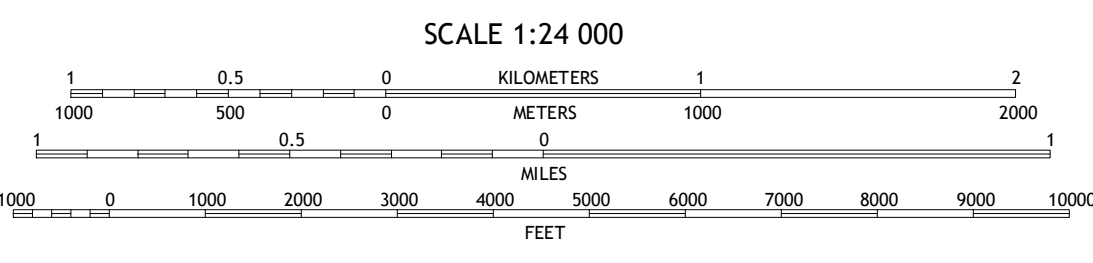
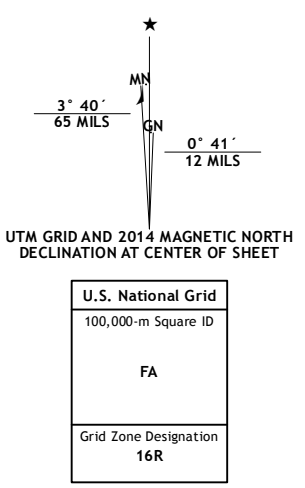
U.S. DEPARTMENT OF THE INTERIOR  
U.S. GEOLOGICAL SURVEY



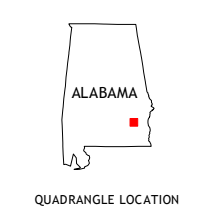
JOSIE QUADRANGLE  
ALABAMA  
7.5-MINUTE SERIES



**Produced by the United States Geological Survey**  
 North American Datum of 1983 (NAD83)  
 World Geodetic System of 1984 (WGS84) Projection and  
 1000-meter grid: Universal Transverse Mercator, Zone 16R  
 10 000-foot ticks: Alabama Coordinate System of 1983 (east zone)  
 This map is not a legal document. Boundaries may be  
 generalized for this map scale. Private lands within government  
 reservations may not be shown. Obtain permission before  
 entering private lands.  
 Imagery.....NAIP, December 2013  
 Roads.....HERE, ©2013  
 Names.....GNIS, 2013  
 Hydrography.....National Hydrography Dataset, 2013  
 Contours.....National Elevation Dataset, 2007  
 Boundaries.....Multiple sources; see metadata file 1972 - 2013



CONTOUR INTERVAL 10 FEET  
 NORTH AMERICAN VERTICAL DATUM OF 1988  
 This map was produced to conform with the  
 National Geospatial Program US Topo Product Standard, 2011.  
 A metadata file associated with this product is draft version 0.6.16



**ROAD CLASSIFICATION**

Expressway	Local Connector
Secondary Hwy	Local Road
Ramp	4WD
Interstate Route	US Route
	State Route

ADJOINING QUADRANGLES

1	2	3
4	5	6
7	8	

1 Saco  
 2 Perote  
 3 Mount Andrew  
 4 Banks  
 5 Louisville  
 6 Brundidge  
 7 Elamville  
 8 Cllo

JOSIE, AL  
2014

