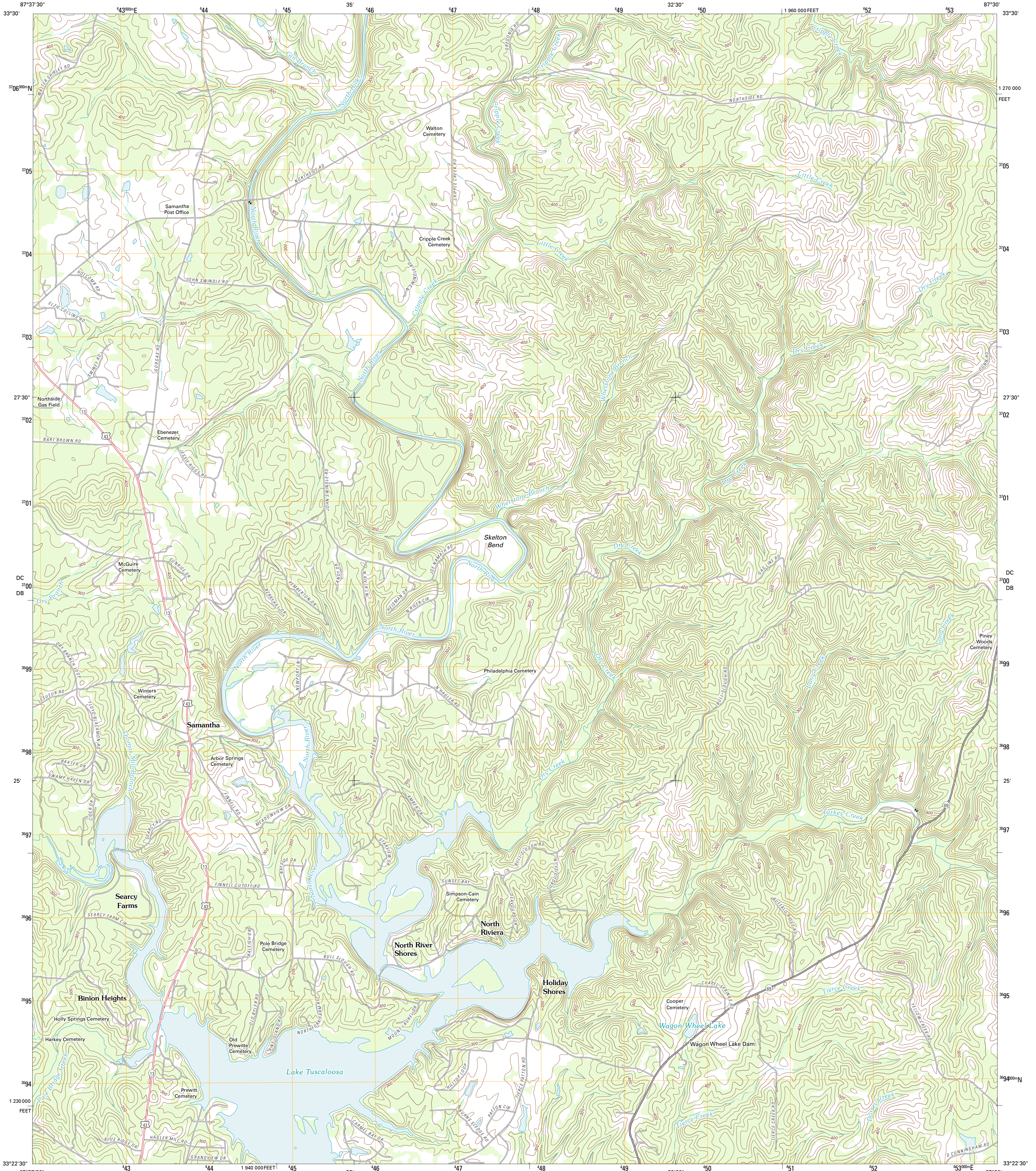




U.S. DEPARTMENT OF THE INTERIOR
U. S. GEOLOGICAL SURVEY

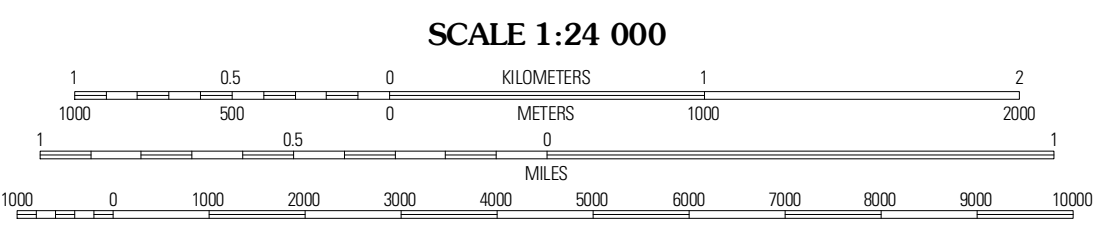
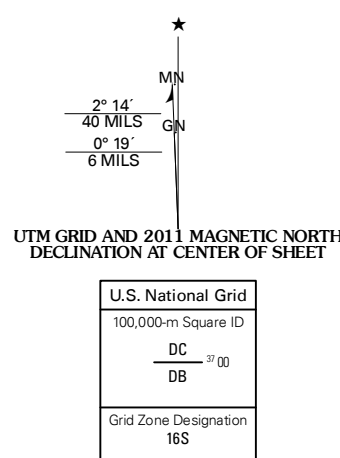


LAKE TUSCALOOSA NORTH QUADRANGLE
ALABAMA-TUSCALOOSA CO.
7.5-MINUTE SERIES



Produced by the United States Geological Survey
North American Datum of 1983 (NAD83)
World Geodetic System of 1984 (WGS84) Projection and
1 000-meter grid; Universal Transverse Mercator, Zone 16S
10 000-foot ticks; Alabama Coordinate System of 1983 (west zone)

Imagery.....NIP, June 2009
Roads.....©2006-2011 TomTom
Names.....GNIS, 2011
Hydrography.....National Hydrography Dataset, 2009
Contours.....National Elevation Dataset, 2008
Boundaries.....Census, IBWC, IBC, USGS, 1972 - 2010

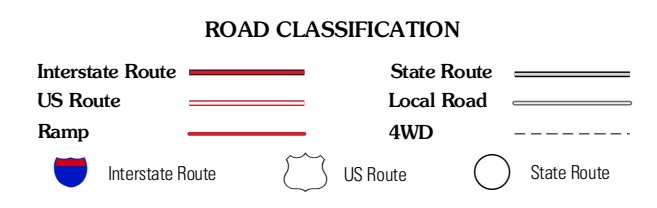


CONTOUR INTERVAL 20 FEET
NORTH AMERICAN VERTICAL DATUM OF 1988
This map was produced to conform with the
National Geospatial Program US Topo Product Standard, 2011.
A metadata file associated with this product is draft version 0.6.0



QUADRANGLE LOCATION

New Lexington	Berry SE	Wiley
Gin Creek	Lake Tuscaloosa North	Windham Springs
Lake Lurleen	Lake Tuscaloosa South	Lake Nicol



LAKE TUSCALOOSA NORTH, AL
2011

ADJOINING 7.5 QUADRANGLES