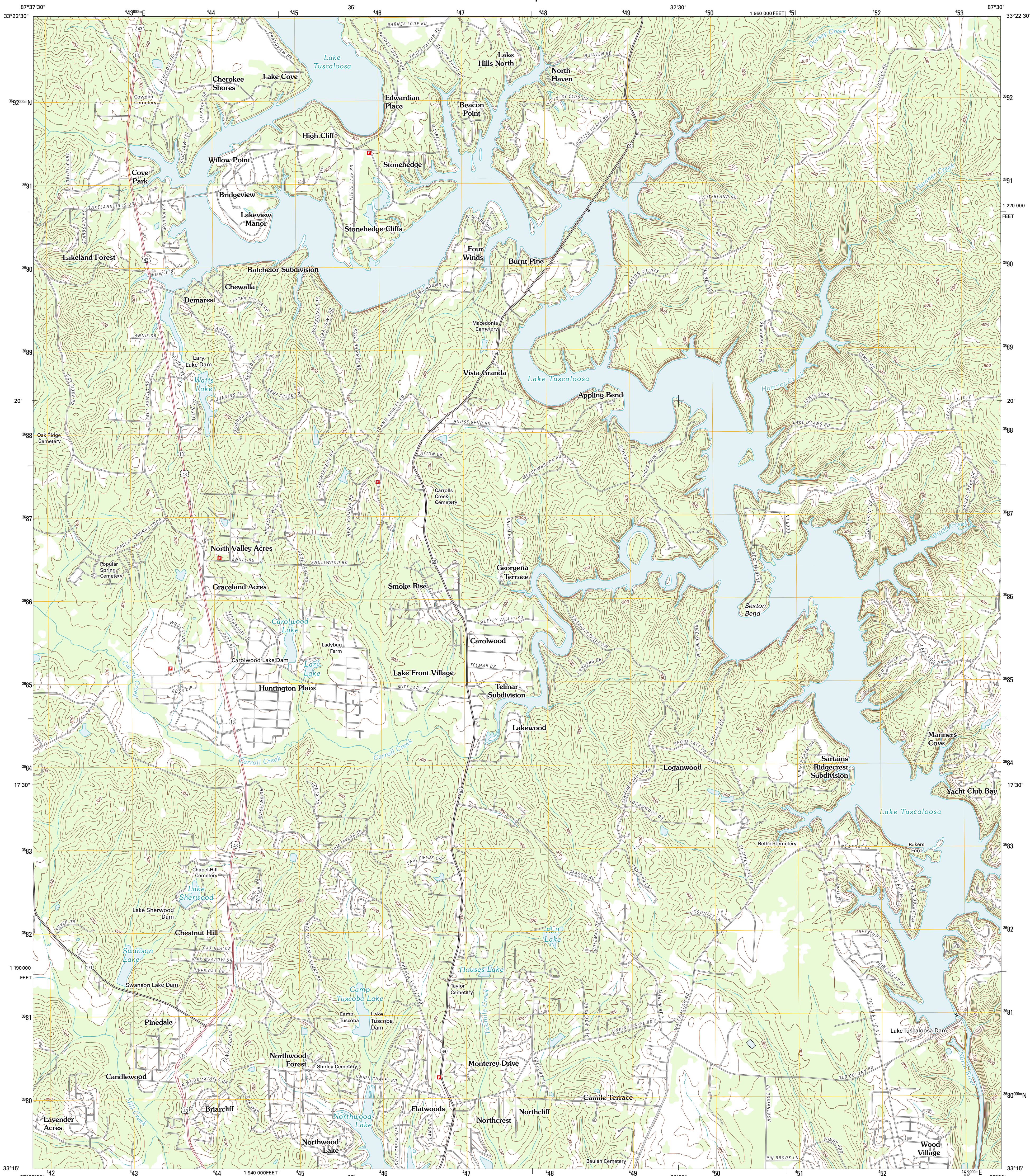




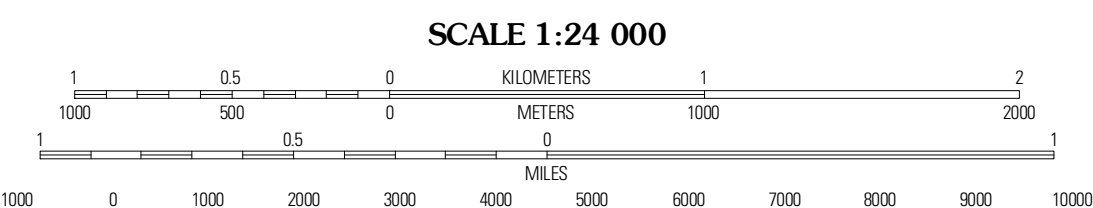
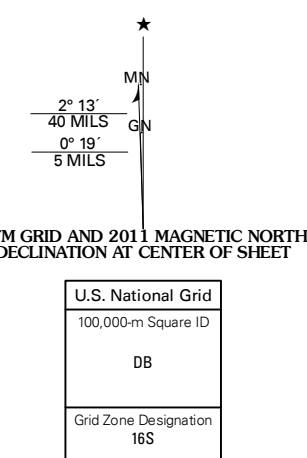
U.S. DEPARTMENT OF THE INTERIOR  
U. S. GEOLOGICAL SURVEY



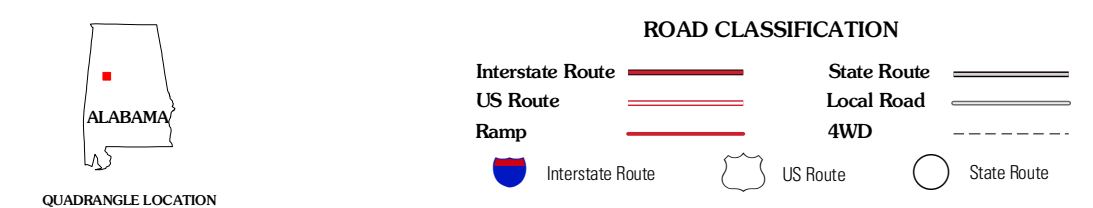
LAKE TUSCALOOSA SOUTH QUADRANGLE  
ALABAMA-TUSCALOOSA CO.  
7.5-MINUTE SERIES



Produced by the United States Geological Survey  
North American Datum of 1983 (NAD83)  
World Geodetic System of 1984 (WGS84). Projection and  
1 000-meter grid: Universal Transverse Mercator, Zone 16S  
10 000-foot ticks: Alabama Coordinate System of 1983 (west zone)



CONTOUR INTERVAL 20 FEET  
NORTH AMERICAN VERTICAL DATUM OF 1988  
This map was produced to conform with the  
National Geospatial Program US Topo Product Standard, 2011.  
A metadata file associated with this product is draft version 0.6.0



QUADRANGLE LOCATION

Gan Creek	Lake Tuscaloosa North	Windham Springs
Lake Luken	Lake Tuscaloosa South	Lake Nicol
Coker	Tuscaloosa	Cottontails

LAKE TUSCALOOSA SOUTH, AL  
2011

ADJOINING 7.5' QUADRANGLES