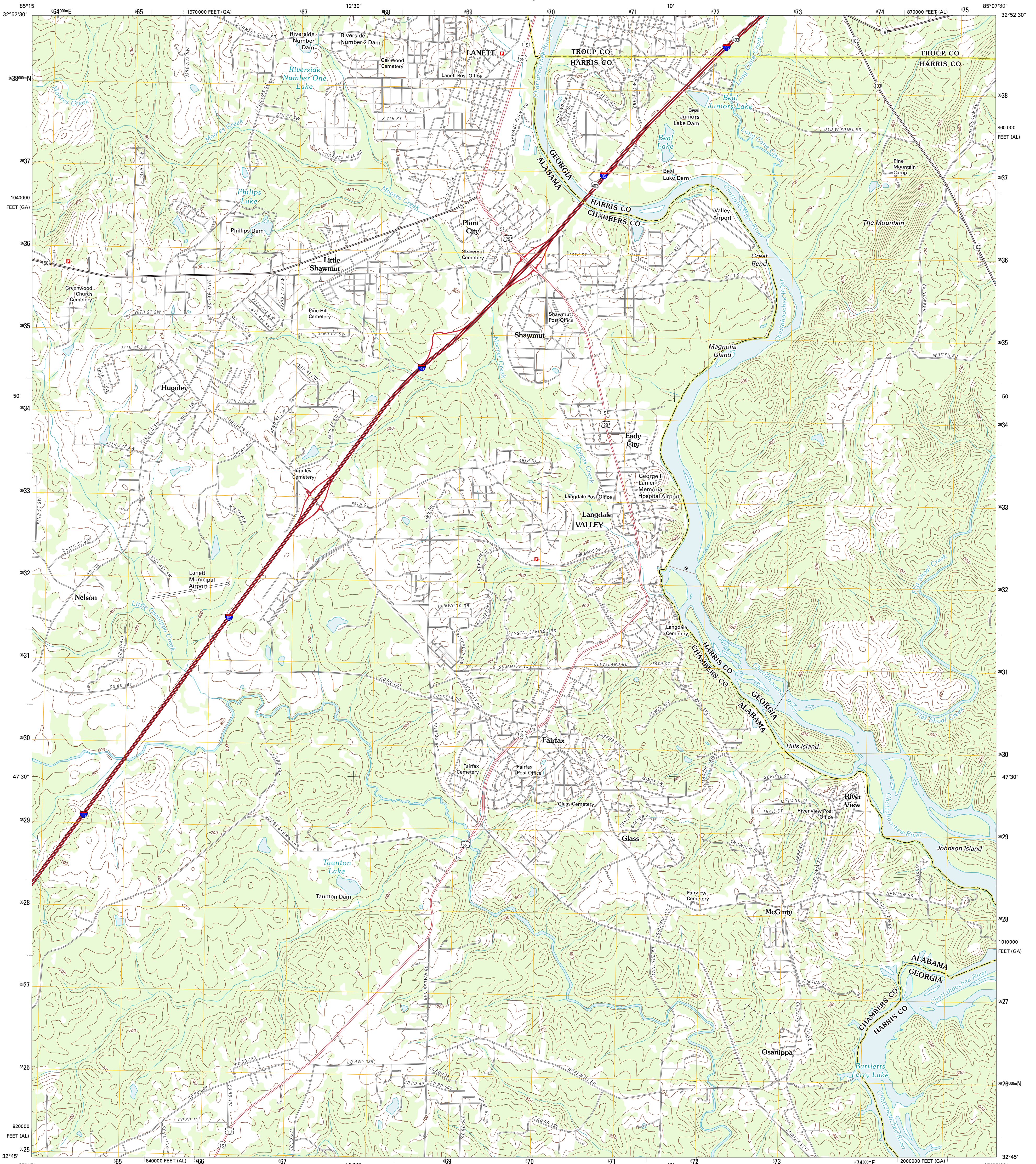




U.S. DEPARTMENT OF THE INTERIOR
U. S. GEOLOGICAL SURVEY

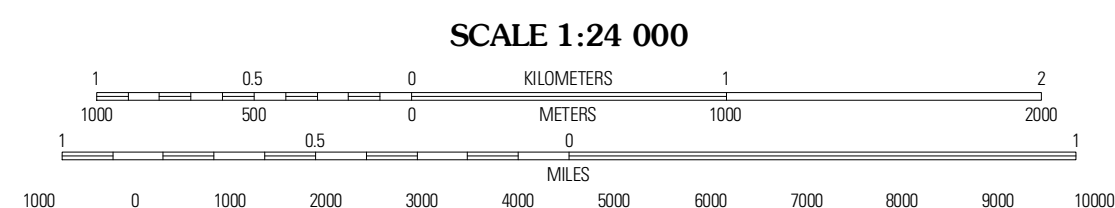
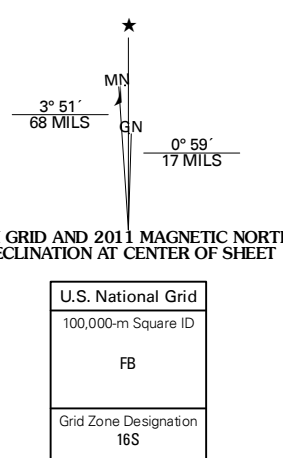


LANETT SOUTH QUADRANGLE
ALABAMA-GEORGIA
7.5-MINUTE SERIES



Produced by the United States Geological Survey
North American Datum of 1983 (NAD83)
World Geodetic System of 1984 (WGS84). Projection and
1 000-meter grid: Universal Transverse Mercator. Zone 16S
10 000-foot ticks: Alabama Coordinate System of 1983 (east
zone), Georgia Coordinate System of 1983 (west zone)

Imagery.....NAP, October 2009
Roads.....©2006-2011 TomTom
Names.....GNIS, 2011
Hydrography.....National Hydrography Dataset, 2009
Contours.....National Elevation Dataset, 2007
Boundaries.....Census, IBWC, IBC, USGS, 1972 - 2010



CONTOUR INTERVAL 20 FEET
NORTH AMERICAN VERTICAL DATUM OF 1988

This map was produced to conform with the
National Geospatial Program US Topo Product Standard, 2011.
A metadata file associated with this product is draft version 0.6.0

ROAD CLASSIFICATION

- Interstate Route
- US Route
- Ramp
- State Route
- Local Road
- 4WD

QUADRANGLE LOCATION

Fredonia	Lanett North	Cannonville
Cassata	Lanett South	Whitesville
Opelika East	Bush	Bartlett's Ferry Dam

ADJOINING 7.5' QUADRANGLES

ALABAMA

LANETT SOUTH, AL-GA
2011