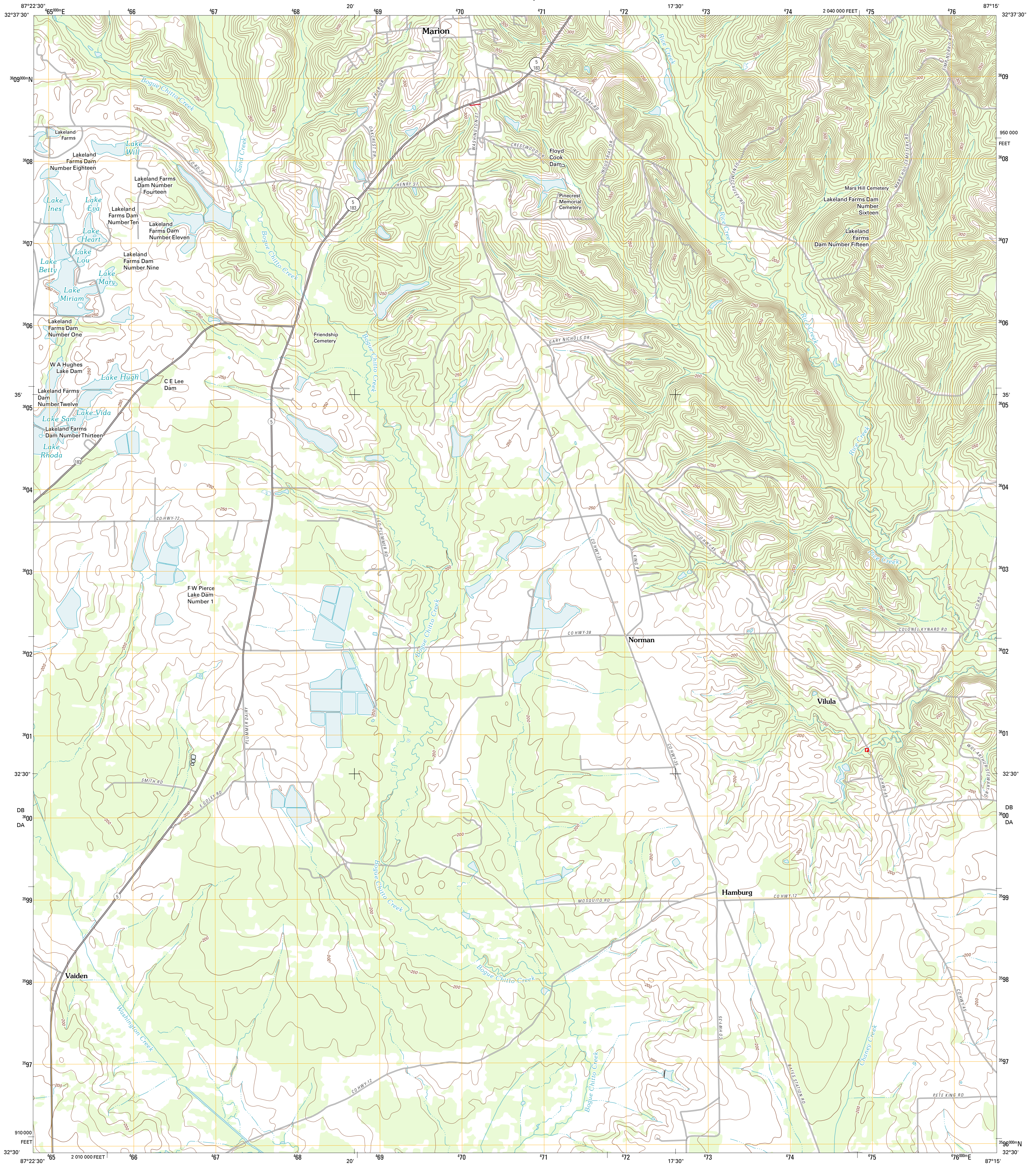




U.S. DEPARTMENT OF THE INTERIOR
U. S. GEOLOGICAL SURVEY



MARION SOUTH QUADRANGLE
ALABAMA-PERRY CO.
7.5-MINUTE SERIES

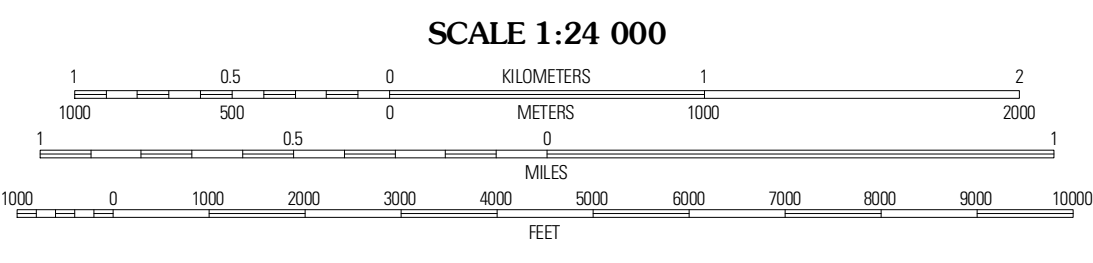


Produced by the United States Geological Survey
North American Datum of 1983 (NAD83)
World Geodetic System of 1984 (WGS84). Projection and
1 000-meter grid: Universal Transverse Mercator, Zone 16S
10 000-foot ticks: Alabama Coordinate System of 1983 (west
zone)

Imagery: NADP, June 2009
Roads: ©2006-2011 TomTom
Names: GNS, 2011
Hydrography: National Hydrography Dataset, 2009
Contours: National Elevation Dataset, 2008
Boundaries: Census, IBWC, IBC, USGS, 1972 - 2010

UTM GRID AND 2011 MAGNETIC NORTH
DECLINATION AT CENTER OF SHEET

U.S. National Grid	16S
100,000-m Square ID	DB 910
Grid Zone Designation	16S



CONTOUR INTERVAL 10 FEET
NORTH AMERICAN VERTICAL DATUM OF 1988

This map was produced to conform with the
National Geospatial Program US Topo Product Standard, 2011.
A metadata file associated with this product is draft version 0.6.0

ROAD CLASSIFICATION

Interstate Route	State Route
US Route	Local Road
Ramp	4WD

Legend for road types: Interstate Route (thick red line), US Route (red line), Ramp (red line with blue triangle), State Route (black line), Local Road (black line), 4WD (dashed black line).

QUADRANGLE LOCATION

Morgan Springs	Marion North	Sprot
Scott Station	Marion South	Suttle
Uniontown East	Browns	Marion Junction

ADJOINING 7.5 QUADRANGLES

MARION SOUTH, AL
2011