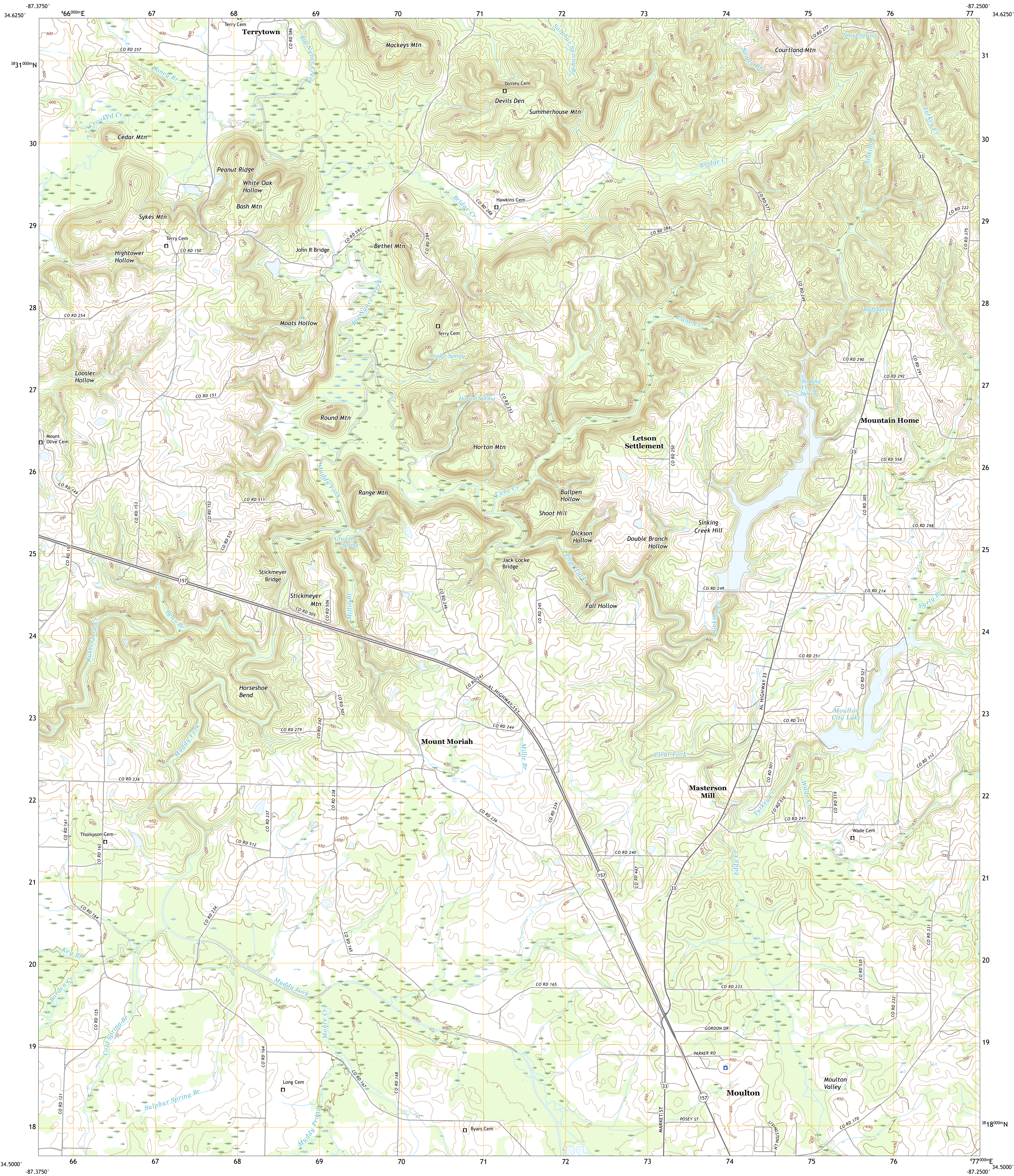




U.S. DEPARTMENT OF THE INTERIOR
U.S. GEOLOGICAL SURVEY



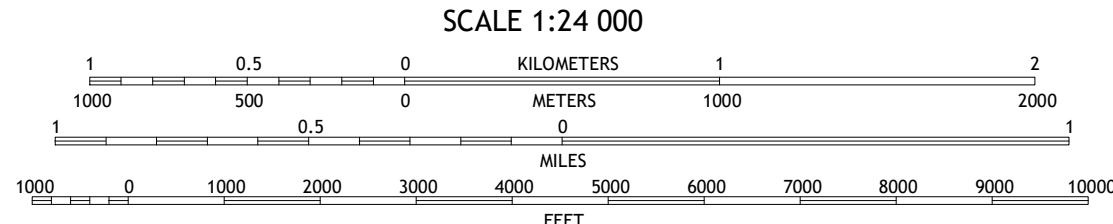
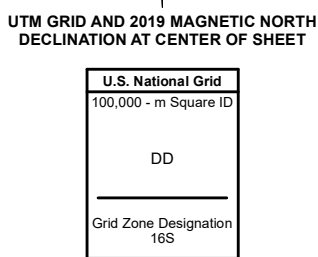
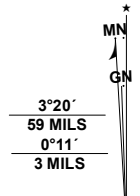
MASTERTSON MILL QUADRANGLE
ALABAMA - LAWRENCE COUNTY
7.5-MINUTE SERIES



Produced by the United States Geological Survey

North American Datum of 1983 (NAD83)
World Geodetic System of 1984 (WGS84), Projection and
1 000-meter grid/Universal Transverse Mercator, Zone 16S
This map is not a legal document. Boundaries may be
generalized for this map scale. Private lands within government
reservations may not be shown. Obtain permission before
entering private lands.

Imagery	U.S. Census Bureau	2019
Roads	U.S. Census Bureau	2017
Names	GNIS	1980
Hydrography	National Hydrography Dataset	2019
Contours	National Elevation Dataset	2018
Boundaries	Multiple sources: see metadata file	2018
Public Land Survey System	BLM	2020
Wetlands	National Wetlands Inventory	1981



CONTOUR INTERVAL 10 FEET
NORTH AMERICAN VERTICAL DATUM OF 1988
This map was produced to conform with the
National Geospatial Program US Topo Product Standard, 2011.
A metadata file associated with this product is draft version 0.6.18



1	2	3
4	5	6
7	8	9

- 1 Town Creek
- 2 Courtland
- 3 Hillsboro
- 4 Hutton
- 5 Caddo
- 6 Landersville
- 7 Moulton
- 8 Oakville

ROAD CLASSIFICATION	
Expressway	Local Connector
Secondary Hwy	Local Road
Ramp	4WD
Interstate Route	US Route
	State Route

MASTERTSON MILL, AL
2020

