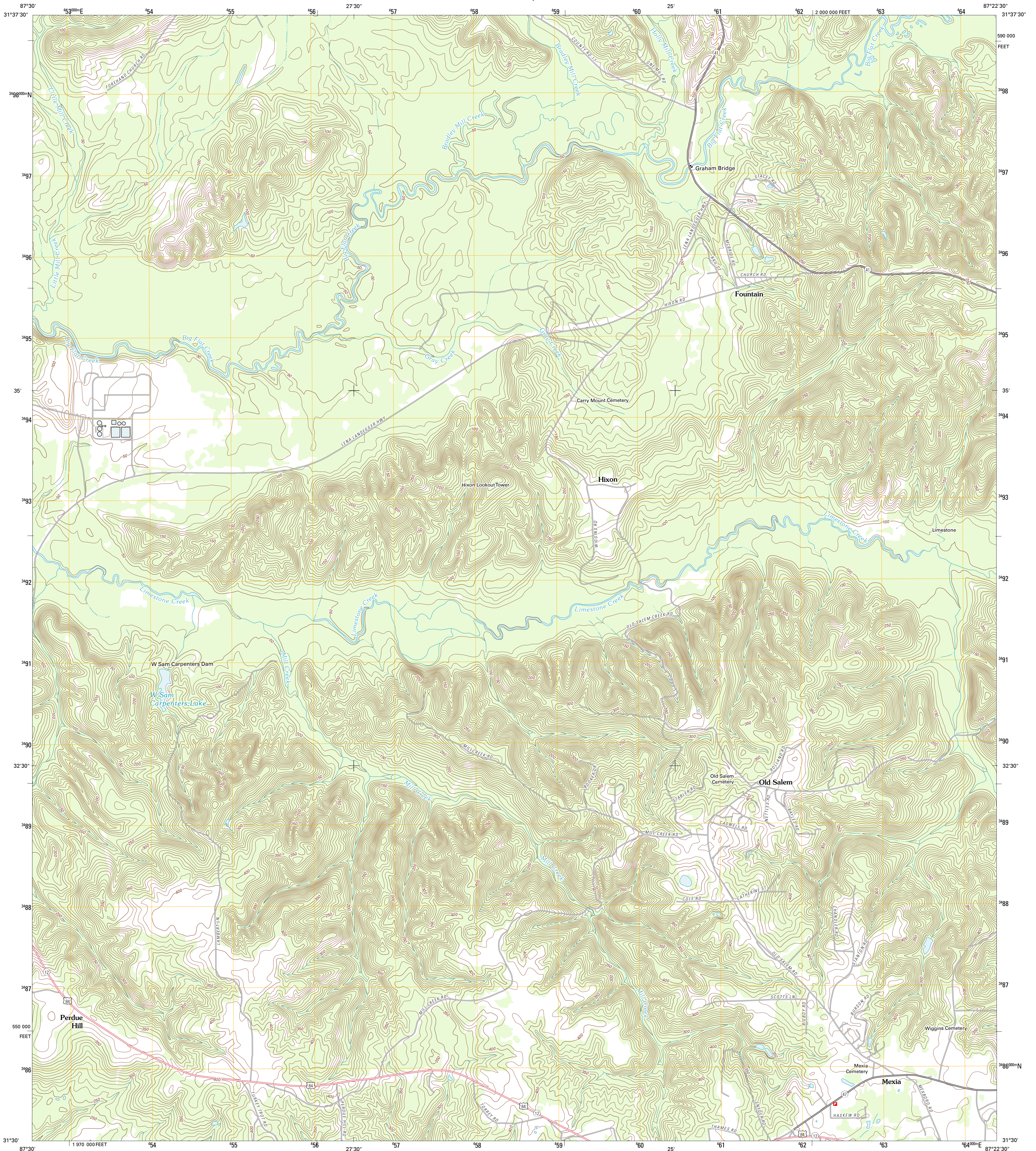




U.S. DEPARTMENT OF THE INTERIOR
U. S. GEOLOGICAL SURVEY

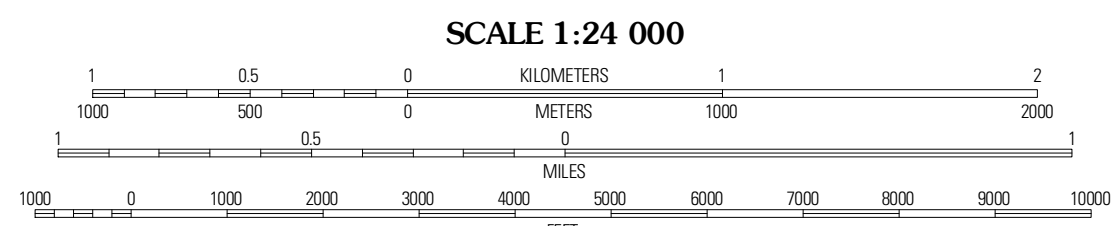
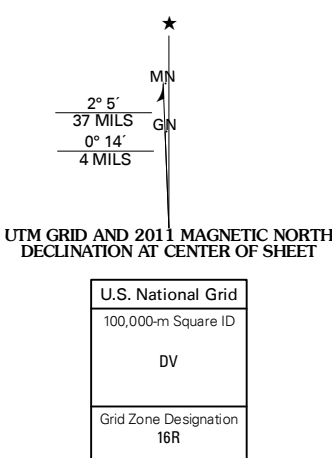


MEXIA QUADRANGLE
ALABAMA-MONROE CO.
7.5-MINUTE SERIES



Produced by the United States Geological Survey
North American Datum of 1983 (NAD83)
World Geodetic System of 1984 (WGS84). Projection and
10 000-foot ticks: Alabama Coordinate System of 1983 (west
zone)

Imagery.....N.A.P., September 2009 - October 2009
Roads.....©2006-2011 TomTom
Names.....©GNIS, 2011
Hydrography.....National Hydrography Dataset, 2009
Contours.....National Elevation Dataset, 2007
Boundaries.....Census, IBWC, IBC, USGS, 1972 - 2010



CONTOUR INTERVAL 10 FEET
NORTH AMERICAN VERTICAL DATUM OF 1988
This map was produced to conform with the
National Geospatial Program US Topo Product Standard, 2011.
A metadata file associated with this product is draft version 0.6.0

ROAD CLASSIFICATION

- Interstate Route
- US Route
- Ramp
- State Route
- Local Road
- 4WD

QUADRANGLE LOCATION

Chance	Franklin	Natchez
Clabome	Mexia	Monroeville
Flynn Lake	Prisco City	Excel

ADJOINING 7.5 QUADRANGLES

MEXIA, AL
2011