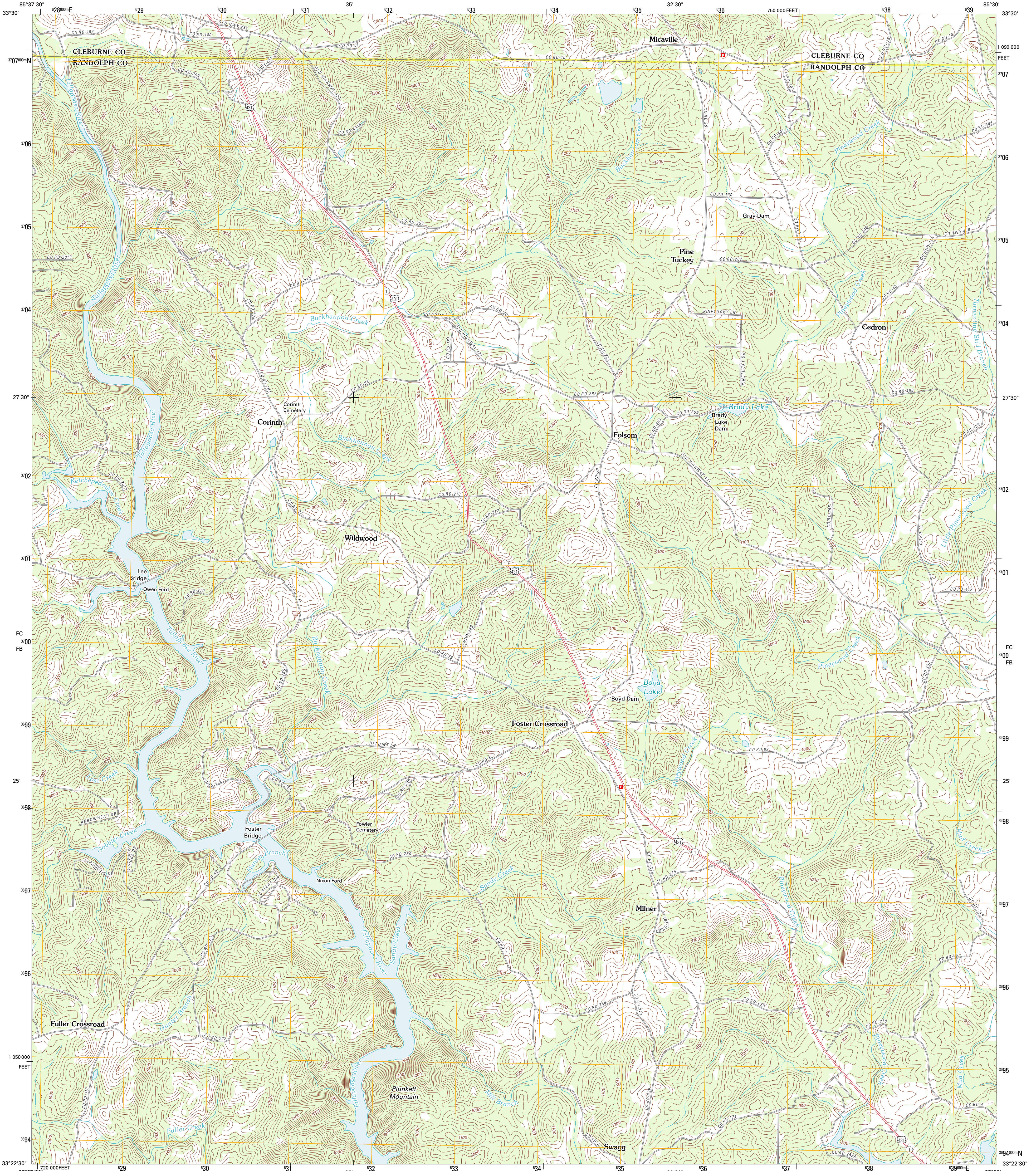




U.S. DEPARTMENT OF THE INTERIOR  
U. S. GEOLOGICAL SURVEY

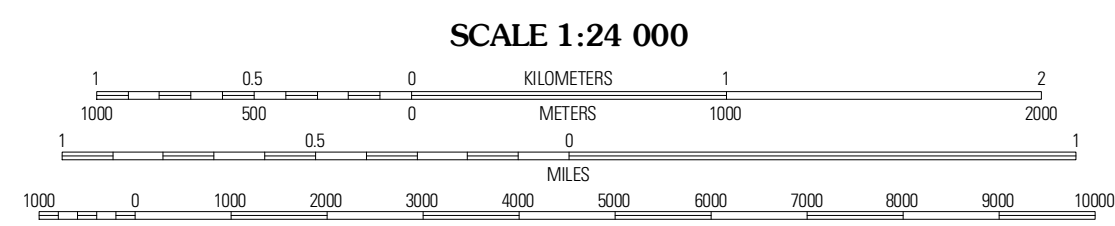
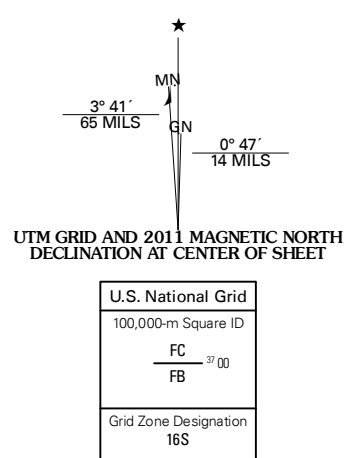


MICAVILLE QUADRANGLE  
ALABAMA  
7.5-MINUTE SERIES



Produced by the United States Geological Survey  
North American Datum of 1983 (NAD83)  
World Geodetic System of 1984 (WGS84) Projection and  
1 000-meter grid: Universal Transverse Mercator, Zone 16S  
10 000-foot ticks: Alabama Coordinate System of 1983 (east zone)

Imagery: N/AIP, October 2009  
Roads: 2006-2011  
Names: GNIS, 2011  
Hydrography: National Hydrography Dataset, 2009  
Contours: National Elevation Dataset, 2008  
Boundaries: Census, IBWC, IBC, USGS, 1972 - 2010



CONTOUR INTERVAL 20 FEET  
NORTH AMERICAN VERTICAL DATUM OF 1988

This map was produced to conform with the National Geospatial Program US Topo Product Standard, 2011. A metadata file associated with this product is draft version 0.6.0



QUADRANGLE LOCATION

Holls Crossroads	Ross Mountain	Hightower
Delta	Micaville	Newell
Lineville East	Okeola	Widowsee

ROAD CLASSIFICATION

Interstate Route	State Route
US Route	Local Road
Ramp	4WD

MICAVILLE, AL  
2011

ADJOINING 7.5 QUADRANGLES