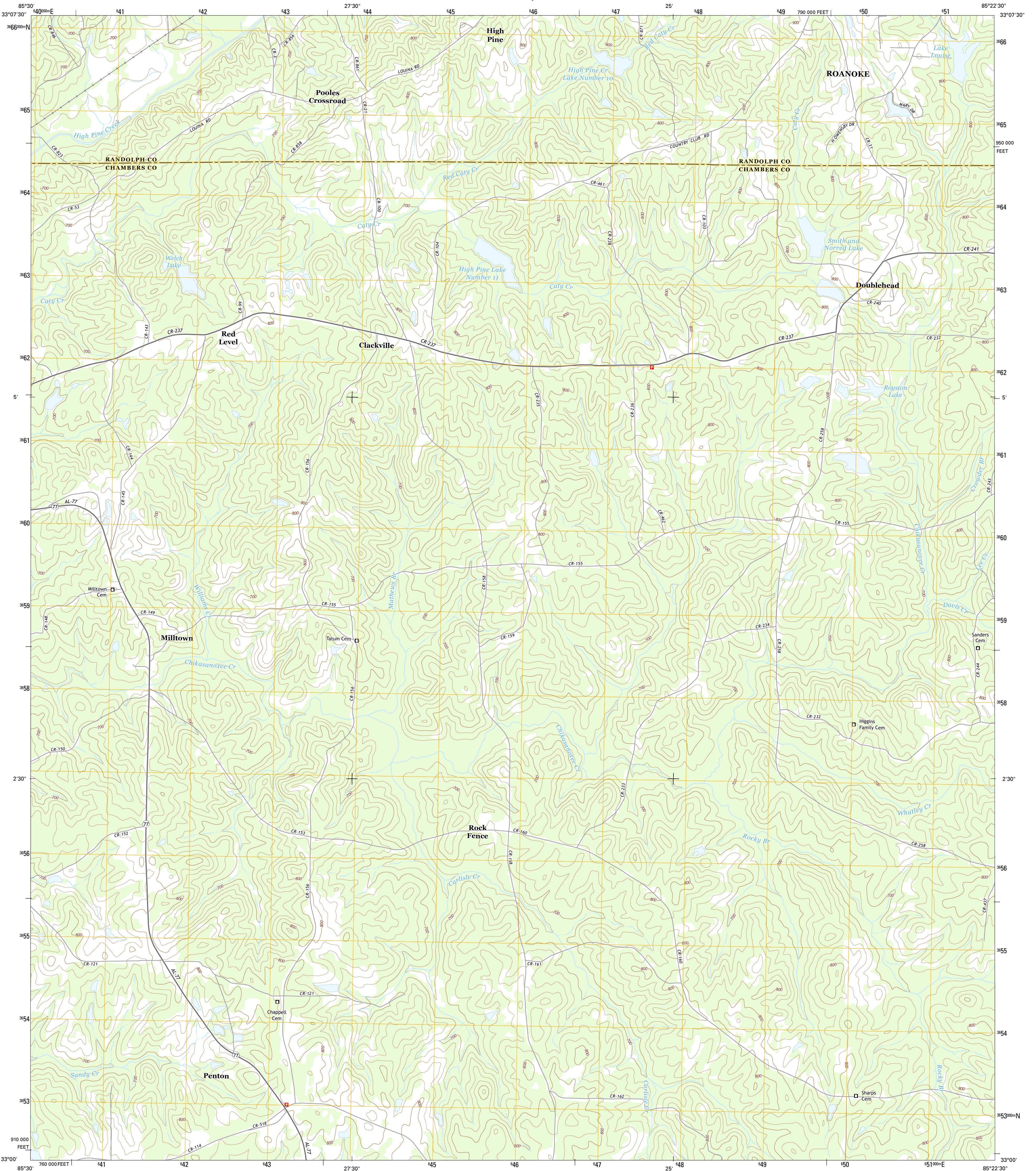




U.S. DEPARTMENT OF THE INTERIOR
U.S. GEOLOGICAL SURVEY



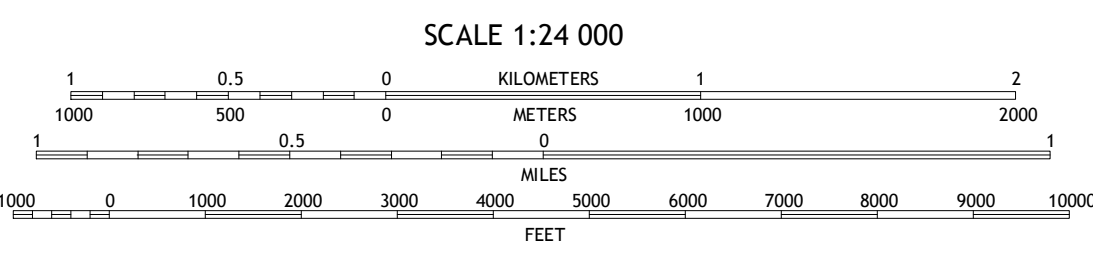
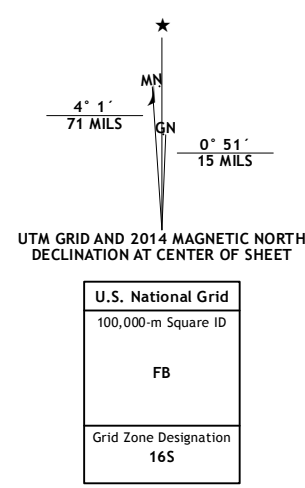
MILLTOWN QUADRANGLE
ALABAMA
7.5-MINUTE SERIES



Produced by the United States Geological Survey
North American Datum of 1983 (NAD83)
World Geodetic System of 1984 (WGS84). Projection and
1 000-meter grid: Universal Transverse Mercator, Zone 16S
10 000-foot ticks: Alabama Coordinate System of 1983 (east
zone)

This map is not a legal document. Boundaries may be
generalized for this map scale. Private lands within government
reservations may not be shown. Obtain permission before
entering private lands.

Imagery.....NAIP, July 2013
Roads.....HERE, ©2013
Names.....GNS, 2013
Hydrography.....National Hydrography Dataset, 2013
Contours.....National Elevation Dataset, 2008
Boundaries.....Multiple sources; see metadata file 1972 - 2013



CONTOUR INTERVAL 20 FEET
NORTH AMERICAN VERTICAL DATUM OF 1988
This map was produced to conform with the
National Geospatial Program US Topo Product Standard, 2011.
A metadata file associated with this product is draft version 0.6.16



ROAD CLASSIFICATION

Expressway	Local Connector
Secondary Hwy	Local Road
Interstate Route	4WD
US Route	State Route

ADJOINING QUADRANGLES

1	2	3
4	5	6
7	8	

- 1 Wadley North
- 2 Roanoke West
- 3 Roanoke East
- 4 Wadley South
- 5 Five Points
- 6 Dudleyville
- 7 Lafayette
- 8 Fredonia

MILLTOWN, AL
2014

