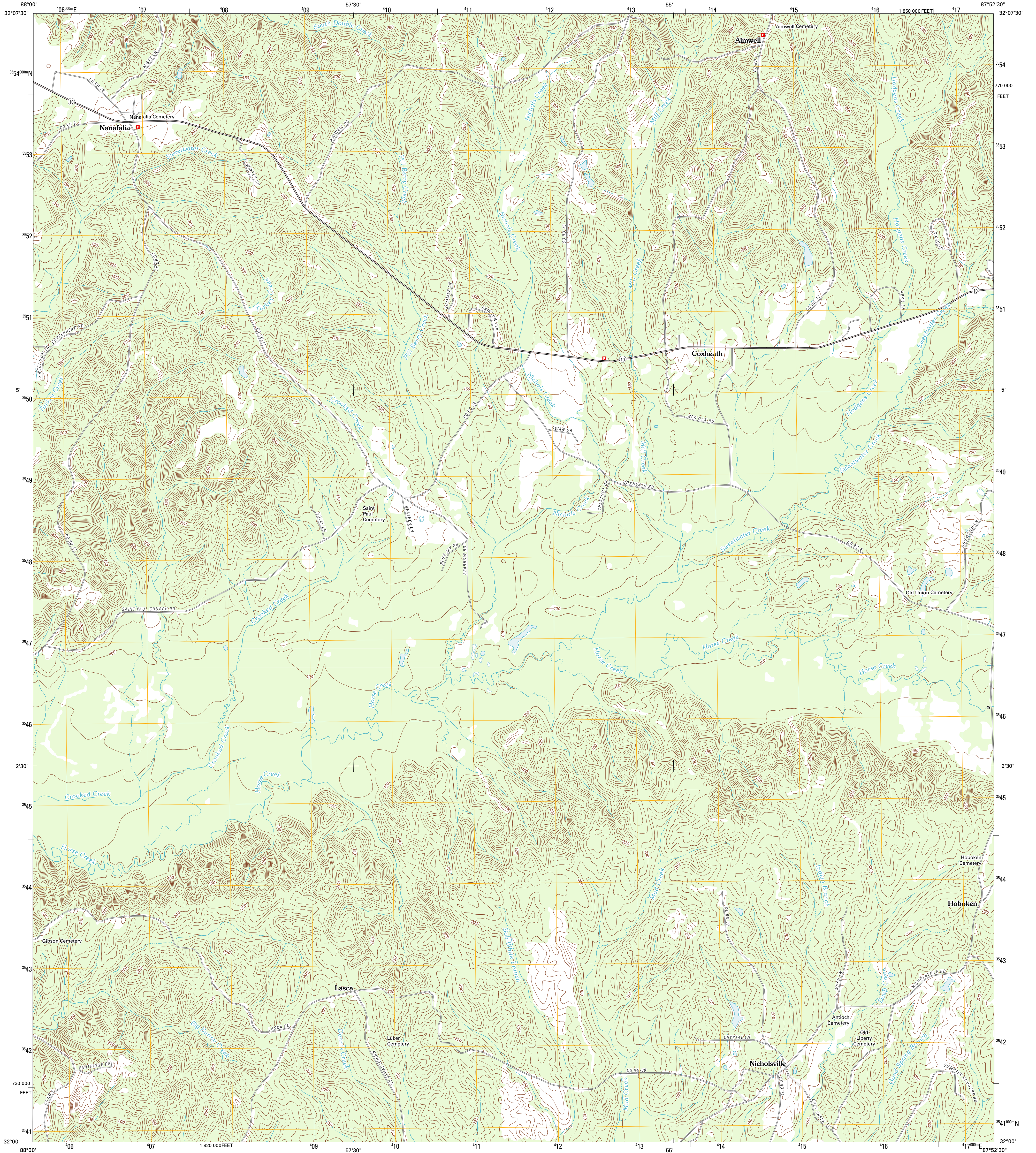




U.S. DEPARTMENT OF THE INTERIOR  
U. S. GEOLOGICAL SURVEY



NANAFALIA QUADRANGLE  
ALABAMA-MARENGO CO.  
7.5-MINUTE SERIES



Produced by the United States Geological Survey  
North American Datum of 1983 (NAD83)  
World Geodetic System of 1984 (WGS84) Projection and  
1 000-meter grid; Universal Transverse Mercator, Zone 16S  
10 000-foot ticks: Alabama Coordinate System of 1983 (west zone)

Imagery.....NAIP, June 2009 - August 2009  
Roads.....1:25000-2011 TomTom  
Names.....GNIS, 2011  
Hydrography.....National Hydrography Dataset, 2009  
Contours.....National Elevation Dataset, 2007  
Boundaries.....Census, IBWC, IBC, USGS, 1972 - 2010

UTM GRID AND 2011 MAGNETIC NORTH DECLINATION AT CENTER OF SHEET

1" = 48' 32" MILES  
1" = 79' 9" MILES

U.S. National Grid
100,000-m Square ID
DA
Grid Zone Designation
16S

SCALE 1:24 000

1 0.5 0 0.5 1 2  
1000 500 0 1000 2000  
KILOMETERS

1 0.5 0 0.5 1  
1000 500 0 1000 2000  
METERS

1 0 1000 2000 3000 4000 5000 6000 7000 8000 9000 10000  
FEET

CONTOUR INTERVAL 10 FEET  
NORTH AMERICAN VERTICAL DATUM OF 1988

This map was produced to conform with the National Geospatial Program US Topo Product Standard, 2011. A metadata file associated with this product is draft version 0.6.0

ROAD CLASSIFICATION

Interstate Route	State Route
US Route	Local Road
Ramp	4WD

QUADRANGLE LOCATION

Pennington	Myrtlewood South	Miller
Putnam	Nanafalia	Sweet Water
Woods Bluff	Morvin	Isak

ADJOINING 7.5 QUADRANGLES

NANAFALIA, AL  
2011