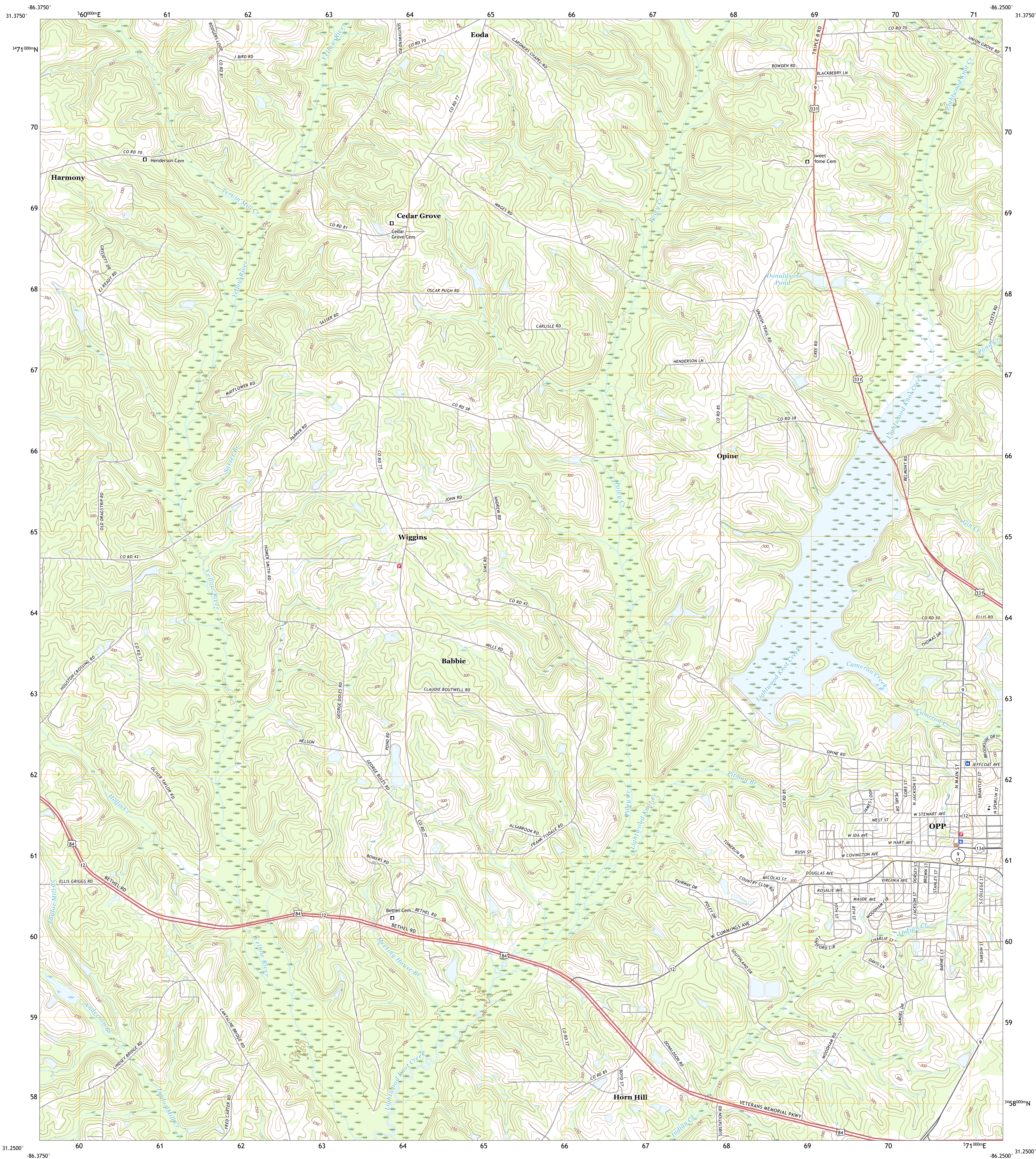




U.S. DEPARTMENT OF THE INTERIOR  
U.S. GEOLOGICAL SURVEY

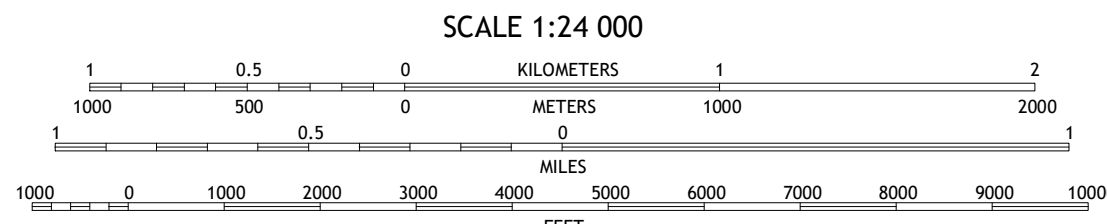
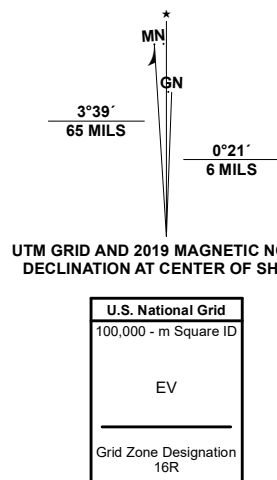


OPP WEST QUADRANGLE  
ALABAMA - COVINGTON COUNTY  
7.5-MINUTE SERIES

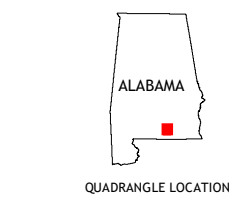


Produced by the United States Geological Survey  
North American Datum of 1983 (NAD83)  
World Geodetic System of 1984 (WGS84). Projection and  
1 000-meter grid/Universal Transverse Mercator, Zone 16R  
This map is not a legal document. Boundaries may be  
generalized for this map scale. Private lands within government  
reservations may not be shown. Obtain permission before  
entering private lands.

Imagery	.....NAIP	November	2019
Roads	.....U.S. Census Bureau	2017	
Names	.....GNIS	1980	2020
Hydrography	.....National Hydrography Dataset	2002	2019
Contours	.....National Elevation Dataset	2020	
Boundaries	.....Multiple sources: see metadata file	2018	2019
Public Land Survey System	.....BLM	2020	
Wetlands	.....FWS National Wetlands Inventory	1981 - 1982	



CONTOUR INTERVAL 10 FEET  
NORTH AMERICAN VERTICAL DATUM OF 1988  
This map was produced to conform with the  
National Geospatial Program US Topo Product Standard, 2011.  
A metadata file associated with this product is draft version 0.6.18



1	2	3
4	5	6
7	8	

- 1 Gantt
- 2 Dozier
- 3 Danleys Crossroads
- 4 Andalusia
- 5 Opp East
- 6 Libertyville
- 7 Onycha
- 8 Kinston

ROAD CLASSIFICATION	
Expressway	Local Connector
Secondary Hwy	Local Road
Ramp	4WD
Interstate Route	US Route
	State Route

OPP WEST, AL  
2020

