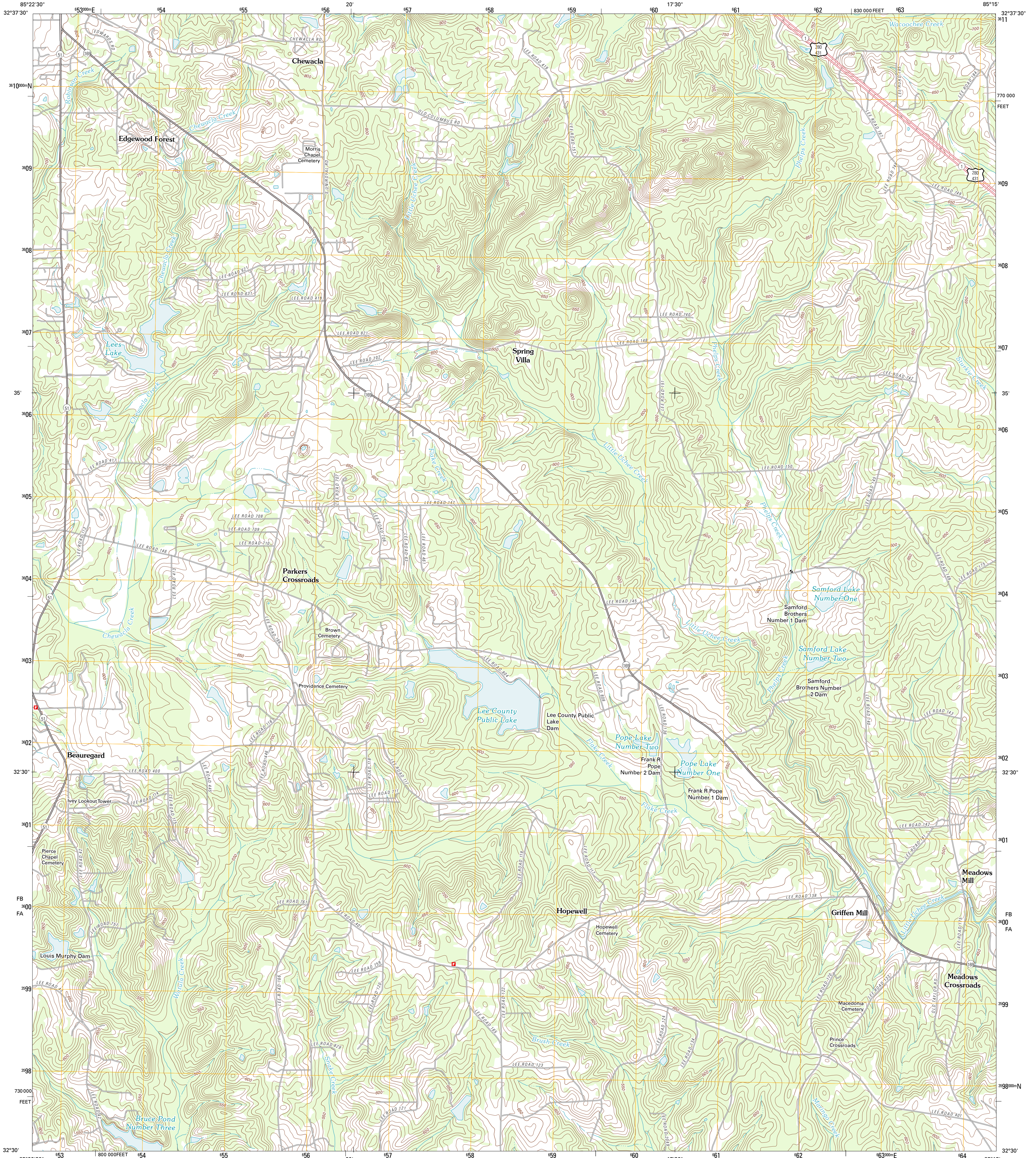




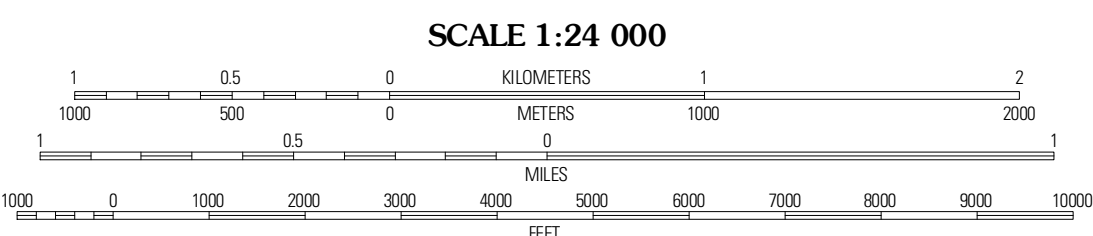
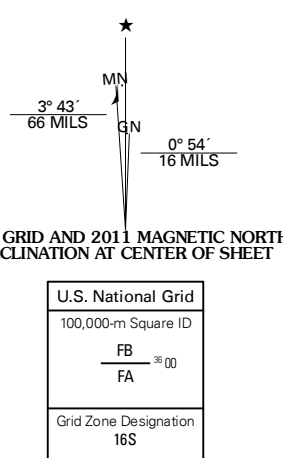
U.S. DEPARTMENT OF THE INTERIOR
U. S. GEOLOGICAL SURVEY



PARKERS CROSSROADS QUADRANGLE
ALABAMA-LEE CO.
7.5-MINUTE SERIES



Produced by the United States Geological Survey
North American Datum of 1983 (NAD83)
World Geodetic System of 1984 (WGS84). Projection and
1 000-meter grid: Universal Transverse Mercator, Zone 16S
10 000-foot ticks: Alabama Coordinate System of 1983 (east
zone)



CONTOUR INTERVAL 10 FEET
NORTH AMERICAN VERTICAL DATUM OF 1988
This map was produced to conform with the
National Geospatial Program US Topo Product Standard, 2011.
A metadata file associated with this product is draft version 0.6.0

Imagery.....NAIP, October 2009
Roads.....©2006-2011 TomTom
Names.....GNIS, 2011
Hydrography.....National Hydrography Dataset, 2009
Contours.....National Elevation Dataset, 2008
Boundaries.....Census, IBWC, IBC, USGS, 1972 - 2010

ROAD CLASSIFICATION

- Interstate Route (thick red line)
- US Route (red line)
- Ramp (red line with blue triangle)
- State Route (thin red line)
- Local Road (black line)
- 4WD (dashed black line)

QUADRANGLE LOCATION

Opelika West	Opelika East	Beulah
Auburn	Parkers Crossroads	Blecker
Society Hill	Marysn	Crawford

ADJOINING 7.5 QUADRANGLES

PARKERS CROSSROADS, AL
2011