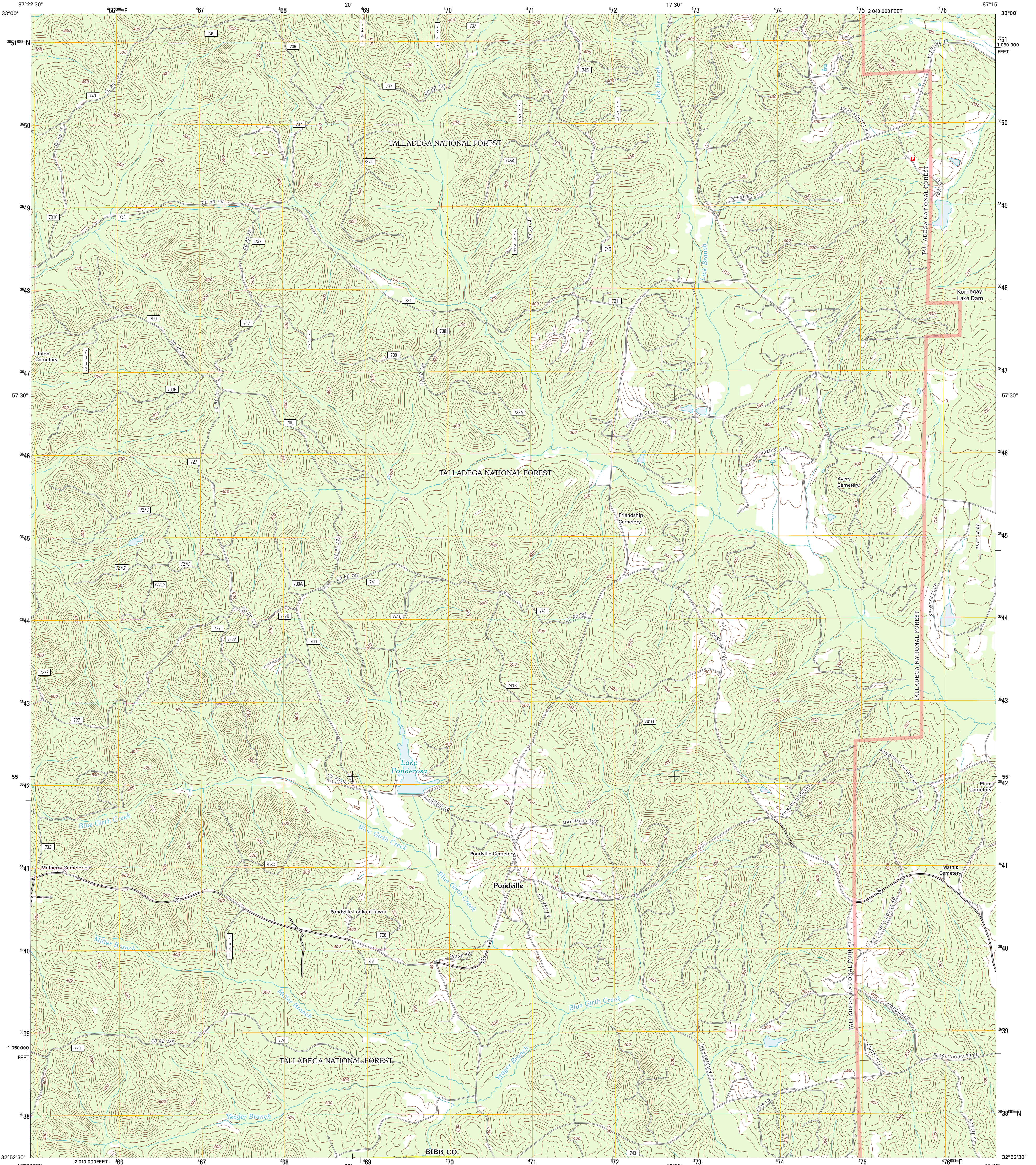




U.S. DEPARTMENT OF THE INTERIOR
U. S. GEOLOGICAL SURVEY



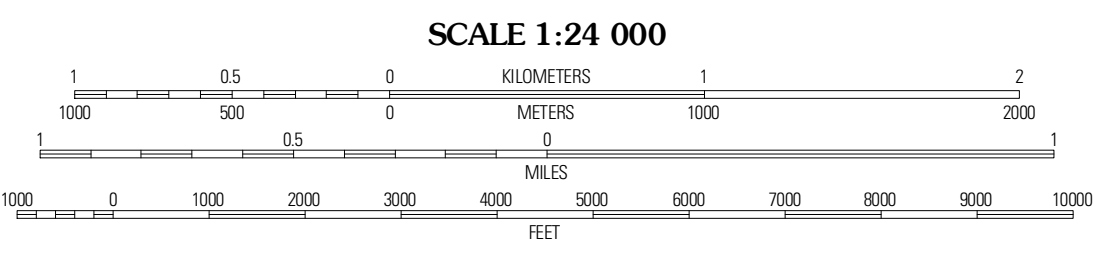
PONDVILLE QUADRANGLE
ALABAMA
7.5-MINUTE SERIES



Produced by the United States Geological Survey
North American Datum of 1983 (NAD83)
World Geodetic System of 1984 (WGS84) Projection and
1 000-meter grid: Universal Transverse Mercator, Zone 16S
10 000-foot ticks: Alabama Coordinate System of 1983 (west zone)

UTM GRID AND 2011 MAGNETIC NORTH DECLINATION AT CENTER OF SHEET

21° 21' 42" N
42 MILS
3° 10'



ROAD CLASSIFICATION

Interstate Route (thick red line)
US Route (red line)
Ramp (red line with blue triangle)
State Route (thin red line)
Local Road (black line)
4WD (black line with red dashes)
FS Primary Route (black line with red circle)
FS Passenger Route (black line with red square)
FS High Clearance Route (black line with red triangle)

Imagery: NAD, June 2009
Roads: ©2006-2011 TomTom
Roads within US Forest Service Lands: FSTopo Data with limited Forest Service updates, 2009
Names: GNIS, 2011
Hydrography: National Hydrography Dataset, 2009
Contours: National Elevation Dataset, 2003
Boundaries: Census, IBWC, IBC, USGS, 1972 - 2010

| | |
|-----------------------|---------------------|
| U.S. National Grid | 100,000-m Square ID |
| | 08 |
| Grid Zone Designation | 16S |

CONTOUR INTERVAL 20 FEET
NORTH AMERICAN VERTICAL DATUM OF 1988

This map was produced to conform with the National Geospatial Program US Topo Product Standard, 2011. A metadata file associated with this product is draft version 0.6.0

QUADRANGLE LOCATION

| | | |
|-------------|------------------|-------------------|
| Duncanville | Pearson | West Blocton West |
| Payne Lake | Pondville | Centreville West |
| Hoggesville | Heiberger | Harrisburg |

Check with local Forest Service unit for current travel conditions and restrictions.

PONDVILLE, AL
2011

ADJOINING 7.5 QUADRANGLES