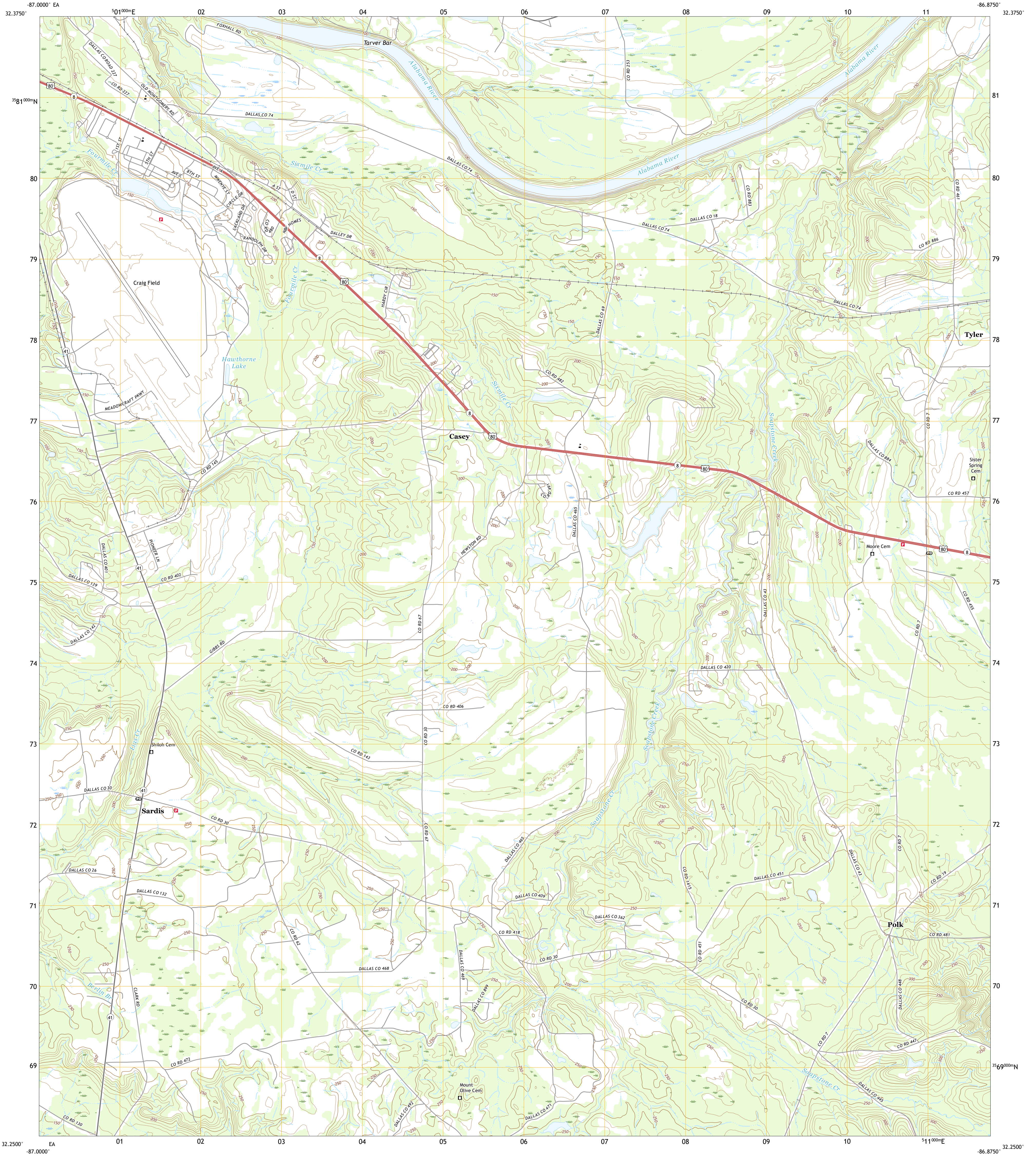




U.S. DEPARTMENT OF THE INTERIOR
U.S. GEOLOGICAL SURVEY



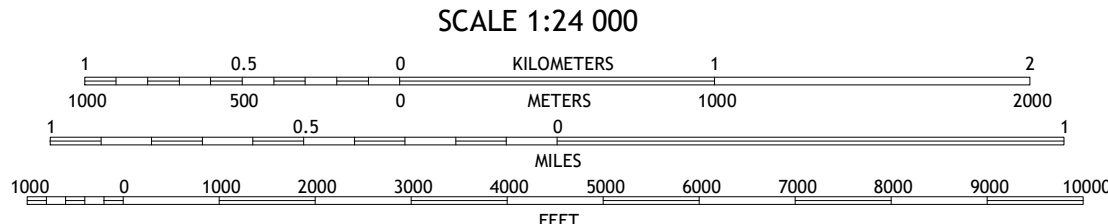
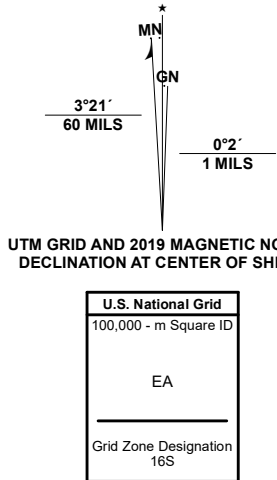
SARDIS QUADRANGLE
ALABAMA - DALLAS COUNTY
7.5-MINUTE SERIES



Produced by the United States Geological Survey

North American Datum of 1983 (NAD83)
World Geodetic System of 1984 (WGS84). Projection and
1 000-meter grid/Universal Transverse Mercator, Zone 16S
This map is not a legal document. Boundaries may be
generalized for this map scale. Private lands within government
reservations may not be shown. Obtain permission before
entering private lands.

ImageryNAIP	September	2019
RoadsU.S. Census Bureau	2017	
NamesGNIS	1980	2020
HydrographyNational Hydrography Dataset	1989	2018
ContoursNational Elevation Dataset	2019	2020
BoundariesMultiple sources: see metadata file	2018	2019
Public Land Survey SystemBLM	2020	
WetlandsFWS National Wetlands Inventory	1981	



CONTOUR INTERVAL 10 FEET
NORTH AMERICAN VERTICAL DATUM OF 1988
This map was produced to conform with the
National Geospatial Program US Topo Product Standard, 2011.
A metadata file associated with this product is draft version 0.6.18



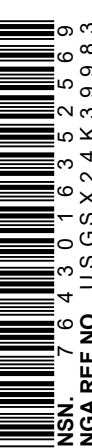
QUADRANGLE LOCATION

1	2	3
4	5	6
7	8	9

1 Selma
2 Burnsville
3 Durant Bend
4 Blackwell Bend
5 Benton
6 Elm Bluff
7 Pleasant Hill
8 Collinsville

ROAD CLASSIFICATION	
Expressway	Local Connector
Secondary Hwy	Local Road
Ramp	4WD
Interstate Route	US Route
	State Route

SARDIS, AL
2020



NSN 7540-01-603-5555
USGS X 2.4 K 3 9 9 8 3
NSA REF. NO.