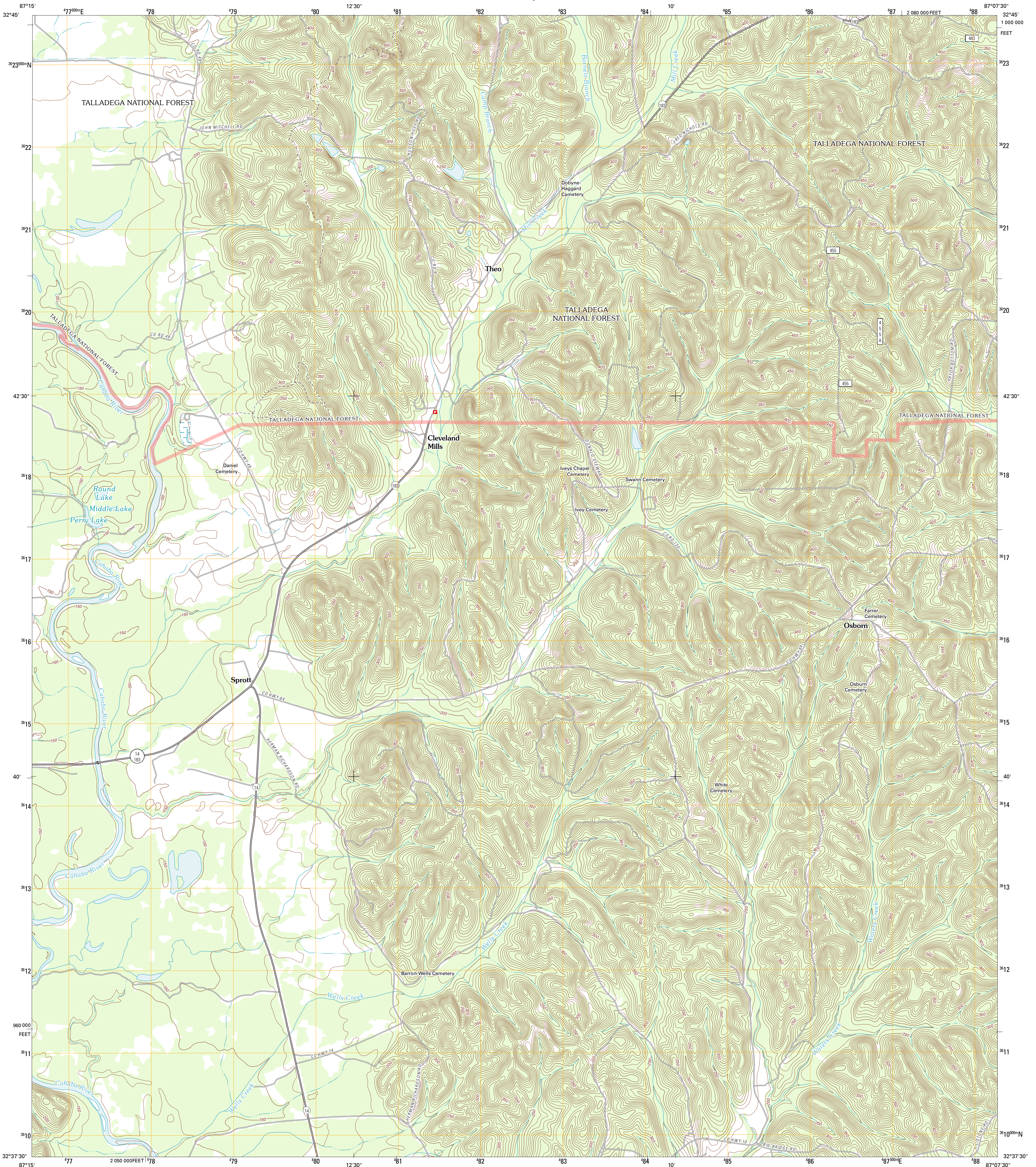




U.S. DEPARTMENT OF THE INTERIOR
U. S. GEOLOGICAL SURVEY



SPROTT QUADRANGLE
ALABAMA-PERRY CO.
7.5-MINUTE SERIES

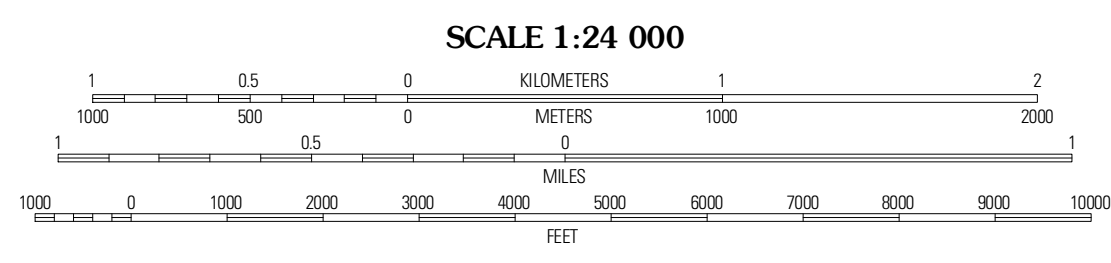


Produced by the United States Geological Survey
North American Datum of 1983 (NAD83)
World Geodetic System of 1984 (WGS84). Projection and
1 000-meter grid: Universal Transverse Mercator, Zone 16S
10 000-foot ticks: Alabama Coordinate System of 1983 (west zone)

UTM GRID AND 2011 MAGNETIC NORTH
DECLINATION AT CENTER OF SHEET

2° 24' 43" M
0° 0' 0" G
2 MILS

U.S. National Grid	100,000-m Square ID
DB	
Grid Zone Designation	16S



CONTOUR INTERVAL 10 FEET
NORTH AMERICAN VERTICAL DATUM OF 1988

This map was produced to conform with the
National Geospatial Program US Topo Product Standard, 2011.
A metadata file associated with this product is draft version 0.6.0



QUADRANGLE LOCATION

Helberger	Harrisburg	Oakledge
Marion North	Sprott	Buck Creek
Marion South	Suttle	Summerfield

ADJOINING 7.5 QUADRANGLES

ROAD CLASSIFICATION

Interstate Route
US Route
Interstate Ramp
FS Primary Route

State Route
Local Road
4WD
FS Passenger Route
FS High Clearance Route

Check with local Forest Service unit
for current travel conditions and restrictions.

SPROTT, AL
2011