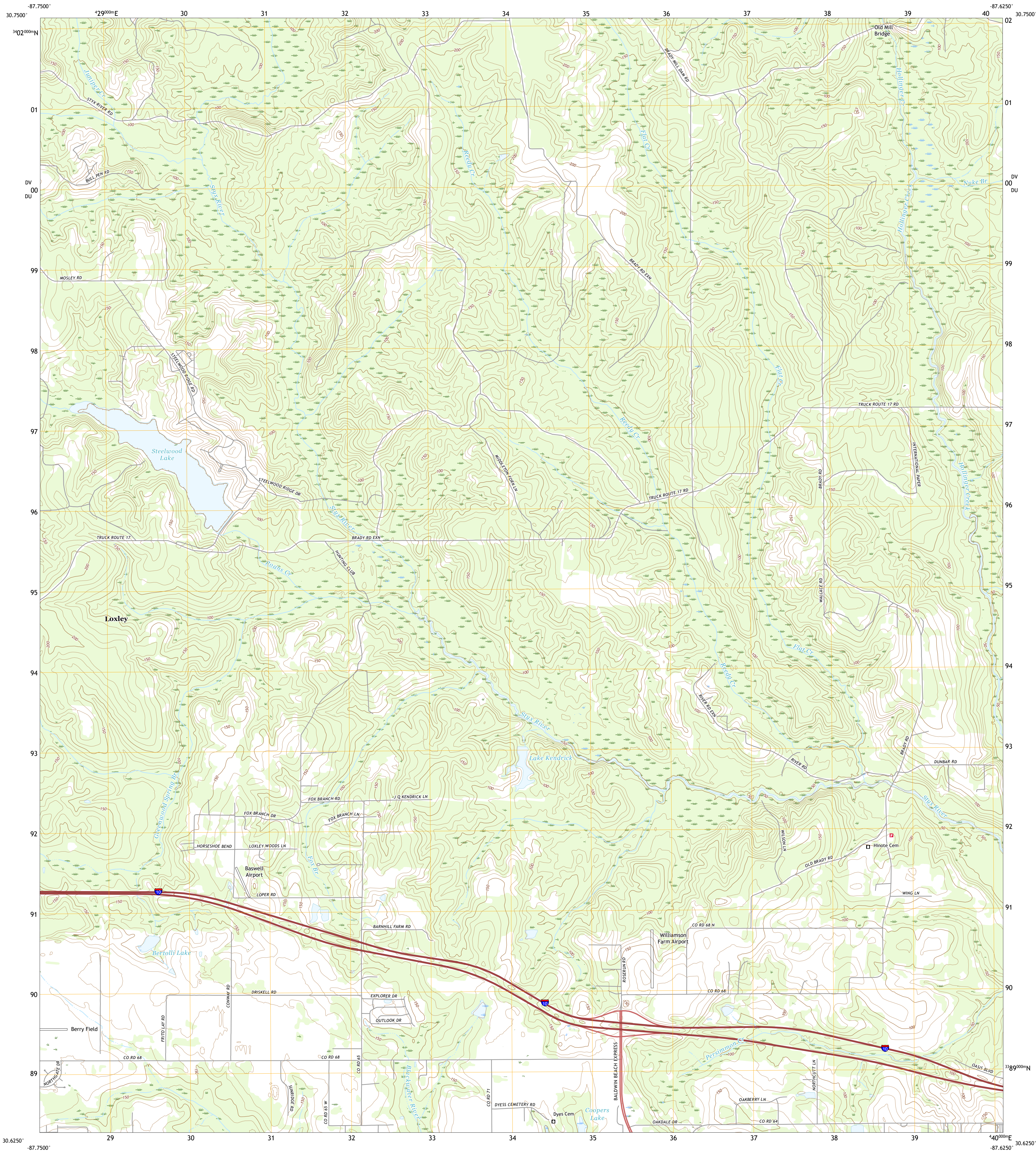




U.S. DEPARTMENT OF THE INTERIOR
U.S. GEOLOGICAL SURVEY



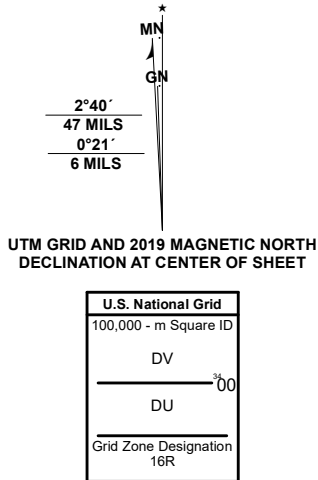
STEELWOOD LAKE QUADRANGLE
ALABAMA - BALDWIN COUNTY
7.5-MINUTE SERIES



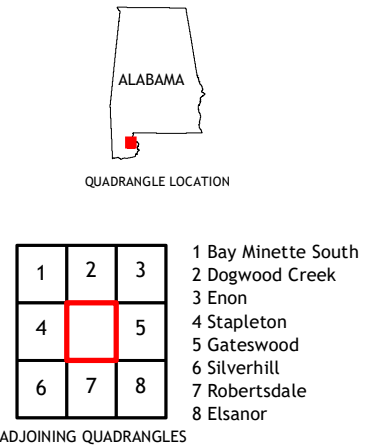
Produced by the United States Geological Survey

North American Datum of 1983 (NAD83)
World Geodetic System of 1984 (WGS84) Projection and
1 000-meter grid/Universal Transverse Mercator, Zone 16R
This map is not a legal document. Boundaries may be
generalized for this map scale. Private lands within government
reservations may not be shown. Obtain permission before
entering private lands.

Imagery.....	NAIP	November	2019
Roads.....	U.S. Census Bureau	2017	
Names.....	GNIS	1980	2020
Hydrography.....	National Hydrography Dataset	2002	2019
Contours.....	National Elevation Dataset	2020	
Boundaries.....	Multiple sources: see metadata file	2018	2019
Public Land Survey System.....	BLM	2020	
Wetlands.....	FWS National Wetlands Inventory	2001	



CONTOUR INTERVAL 10 FEET
NORTH AMERICAN VERTICAL DATUM OF 1988
This map was produced to conform with the
National Geospatial Program US Topo Product Standard, 2011.
A metadata file associated with this product is draft version 0.6.18



ROAD CLASSIFICATION		
Expressway	Local Connector	
Secondary Hwy	Local Road	
Ramp	4WD	
Interstate Route	US Route	State Route

1	2	3
4	5	
6	7	8

ADJOINING QUADRANGLES

STEELWOOD LAKE, AL
2020

