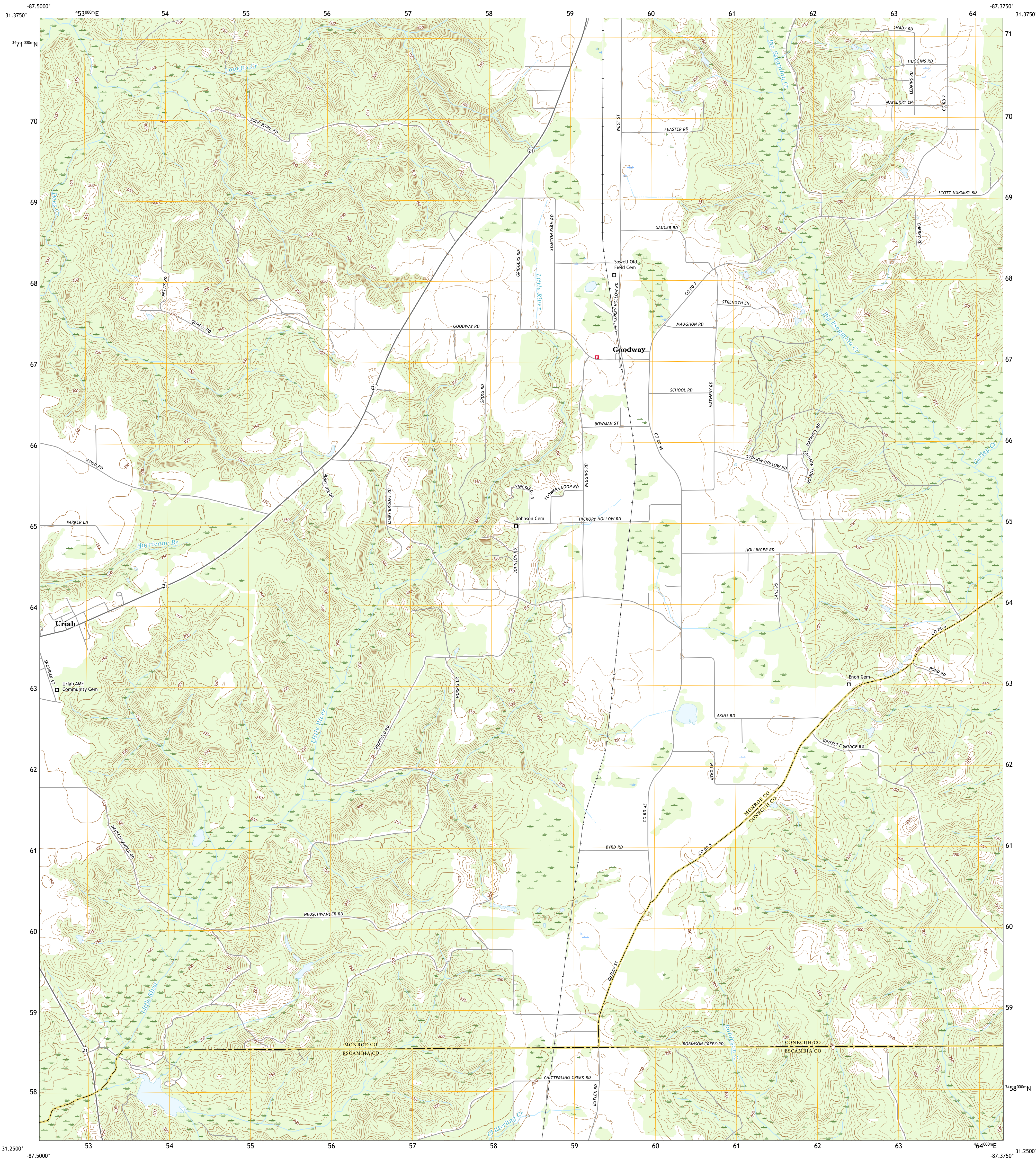




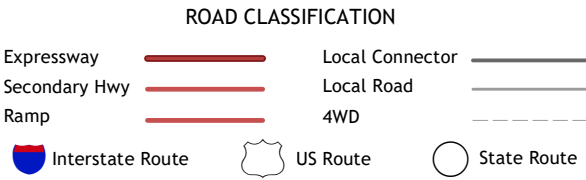
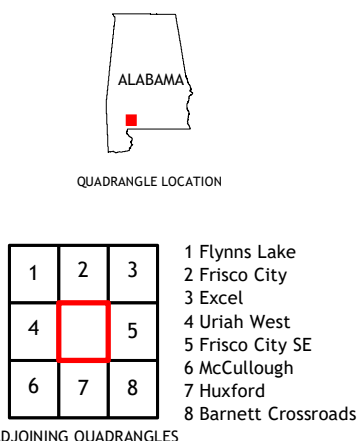
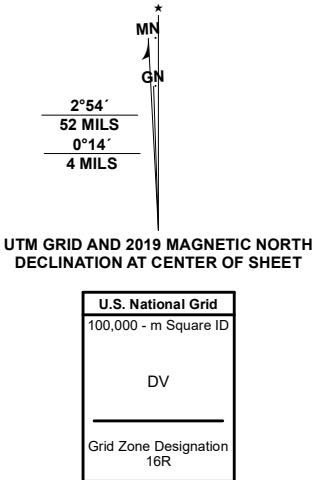
U.S. DEPARTMENT OF THE INTERIOR
U.S. GEOLOGICAL SURVEY



URIAH EAST QUADRANGLE
ALABAMA
7.5-MINUTE SERIES



Produced by the United States Geological Survey
North American Datum of 1983 (NAD83)
World Geodetic System of 1984 (WGS84). Projection and
1 000-meter grid/Universal Transverse Mercator, Zone 16R
This map is not a legal document. Boundaries may be
generalized for this map scale. Private lands within government
reservations may not be shown. Obtain permission before
entering private lands.
Imagery.....NAIP, November 2019
Roads.....U.S. Census Bureau, 2017
Names.....GNIS, 1980, 2020
Hydrography.....National Hydrography Dataset, 1989 - 2019
Contours.....National Elevation Dataset, 2016 - 2020
Boundaries.....Multiple sources: see metadata file 2018 - 2019
Public Land Survey System.....BLM, 2020
Wetlands.....FWS National Wetlands Inventory 1981 - 2001



URIAH EAST, AL
2020

