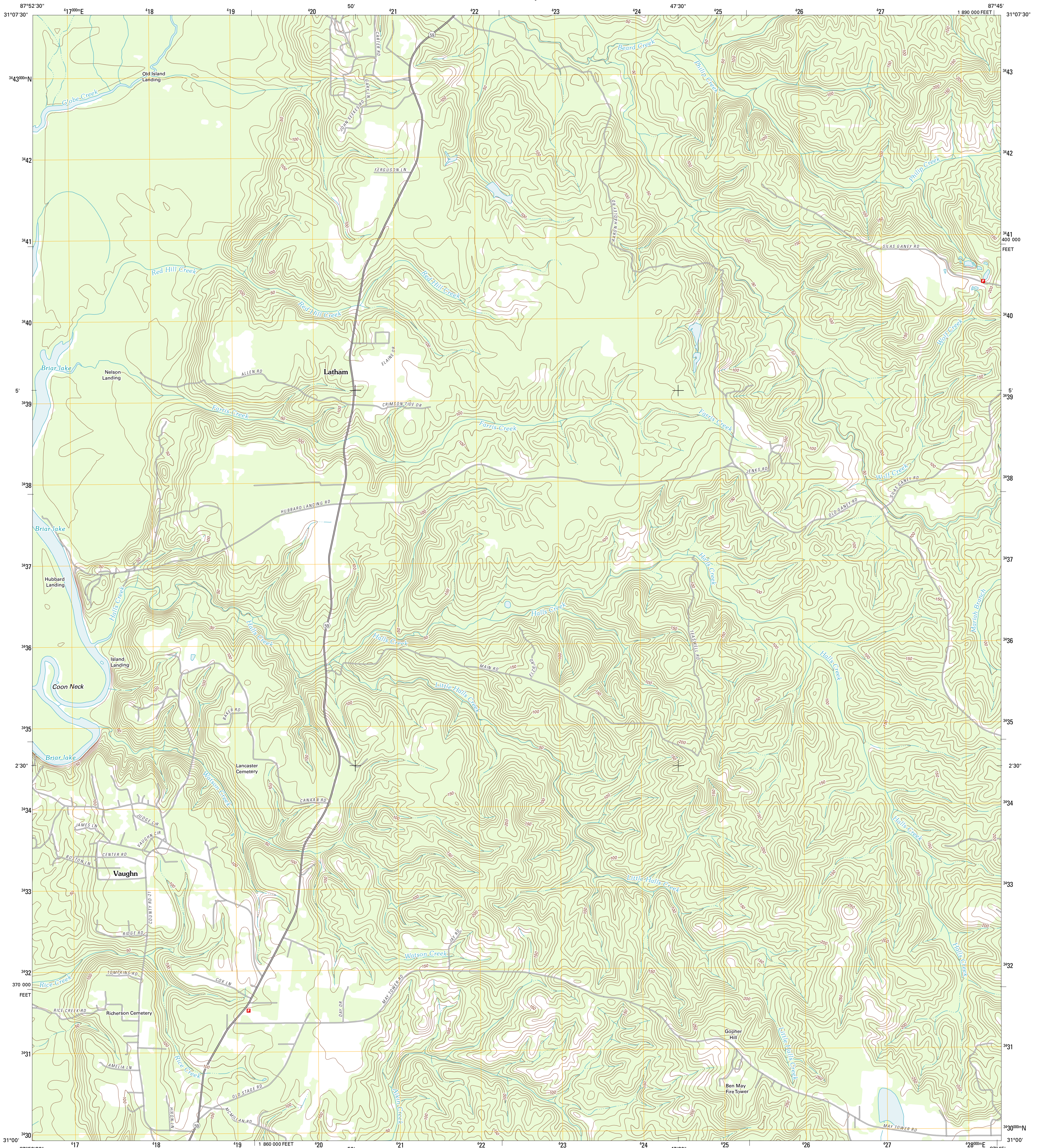




U.S. DEPARTMENT OF THE INTERIOR
U. S. GEOLOGICAL SURVEY

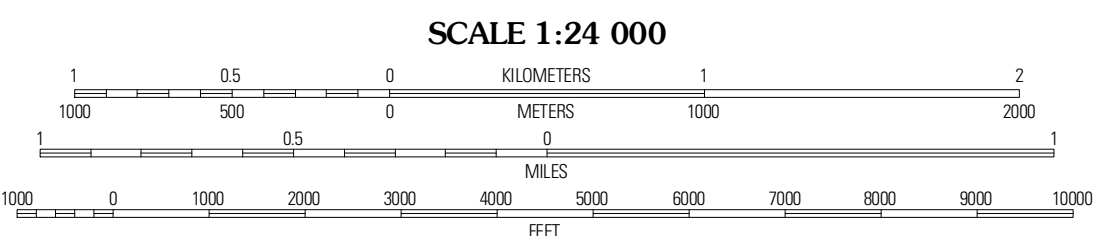
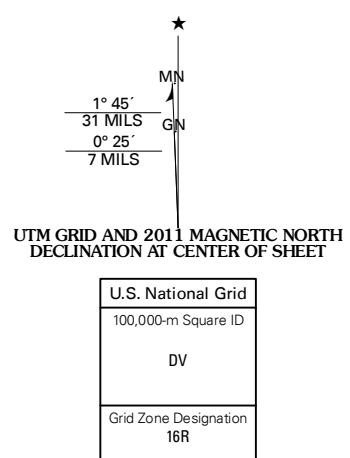


VAUGHN QUADRANGLE
ALABAMA-BALDWIN CO.
7.5-MINUTE SERIES

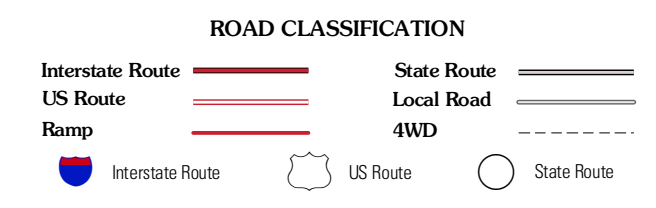
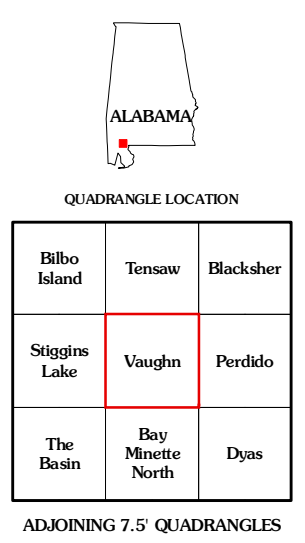


Produced by the United States Geological Survey
North American Datum of 1983 (NAD83)
World Geodetic System of 1984 (WGS84) Projection and
1 000-meter grid: Universal Transverse Mercator, Zone 16R
10 000-foot ticks: Alabama Coordinate System of 1983 (west zone)

Imagery: NADP, June 2009
Roads: ©2006-2011 TomTom
Names: GNIS, 2011
Hydrography: National Hydrography Dataset, 2009
Contours: National Elevation Dataset, 2007
Boundaries: Census, IBWC, IBC, USGS, 1972 - 2010



CONTOUR INTERVAL 10 FEET
NORTH AMERICAN VERTICAL DATUM OF 1988
This map was produced to conform with the National Geospatial Program US Topo Product Standard, 2011. A metadata file associated with this product is draft version 0.6.0



VAUGHN, AL
2011

ADJOINING 7.5 QUADRANGLES