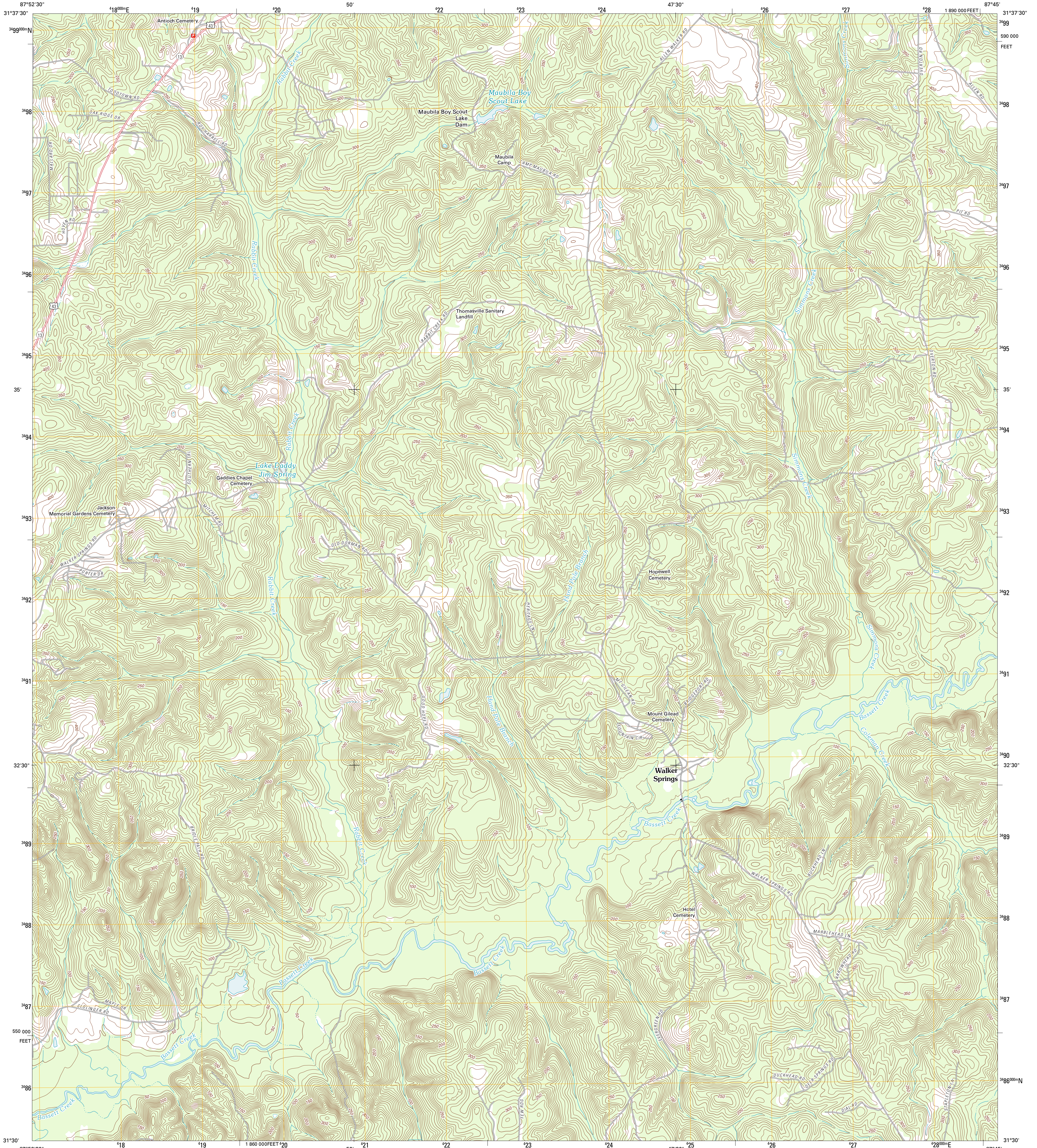




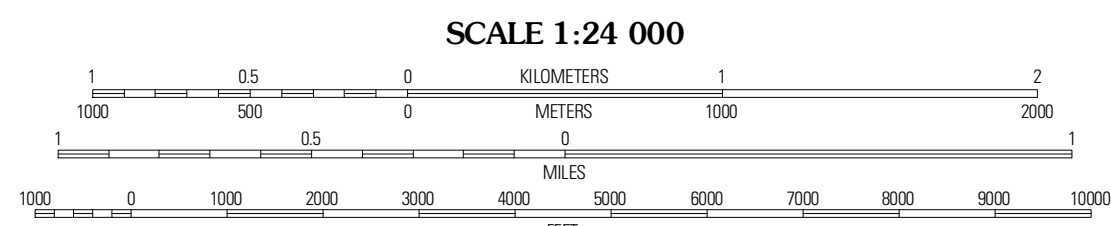
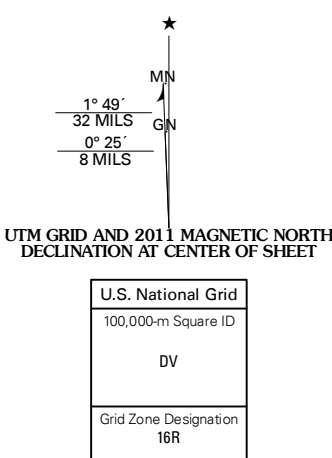
U.S. DEPARTMENT OF THE INTERIOR
U. S. GEOLOGICAL SURVEY



WALKER SPRINGS QUADRANGLE
ALABAMA-CLARKE CO.
7.5-MINUTE SERIES



Produced by the United States Geological Survey
North American Datum of 1983 (NAD83)
World Geodetic System of 1984 (WGS84) Projection and
1 000-meter grid: Universal Transverse Mercator, Zone 16R
and 10 000-foot ticks: Alabama Coordinate System of 1983 (west zone)

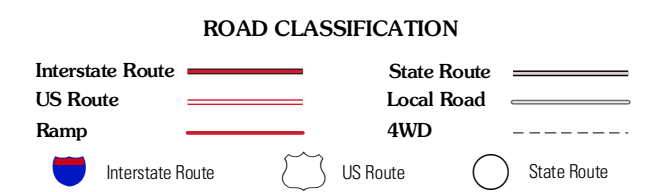


CONTOUR INTERVAL 10 FEET
NORTH AMERICAN VERTICAL DATUM OF 1988
This map was produced to conform with the
National Geospatial Program US Topo Product Standard, 2011.
A metadata file associated with this product is draft version 0.6.0



QUADRANGLE LOCATION

Winn	Grove Hill	Whaley
Jackson	Walker Springs	Suggsville
Prestwick	Alma	Gainestown



WALKER SPRINGS, AL
2011

ADJOINING 7.5 QUADRANGLES