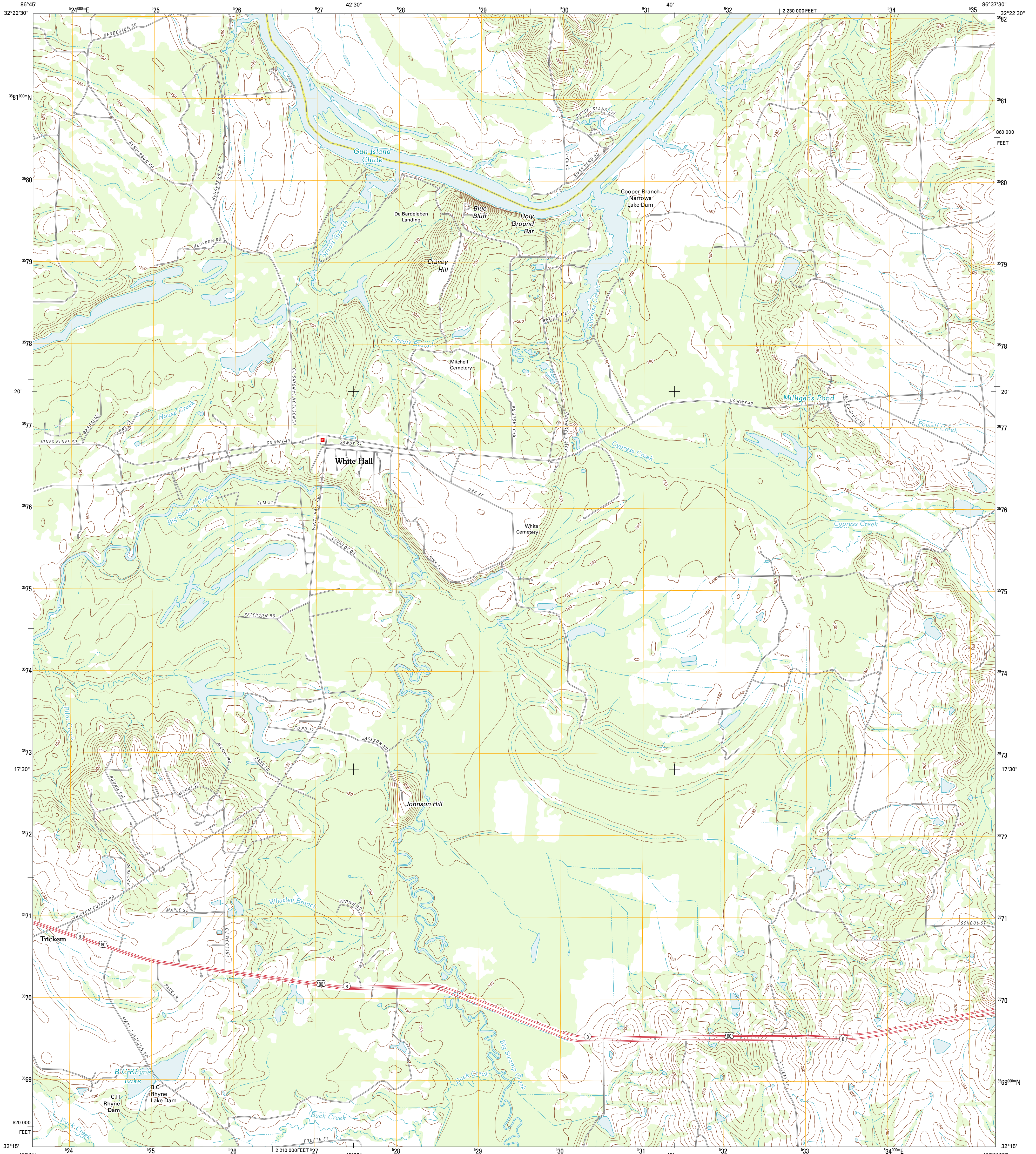




U.S. DEPARTMENT OF THE INTERIOR  
U. S. GEOLOGICAL SURVEY

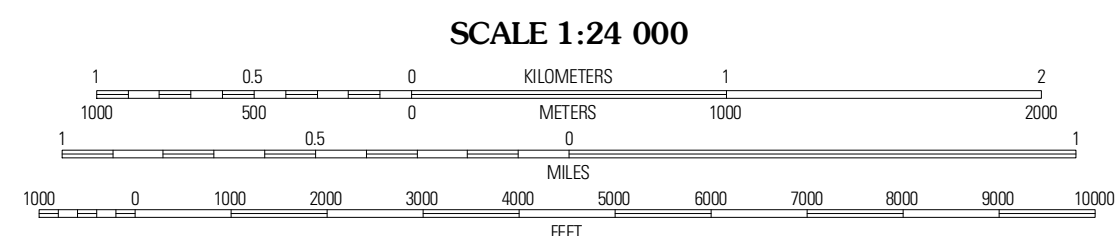
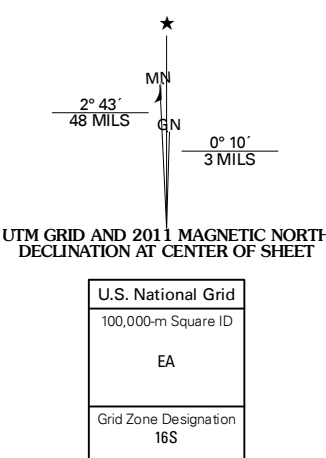


WHITE HALL QUADRANGLE  
ALABAMA  
7.5-MINUTE SERIES



Produced by the United States Geological Survey  
North American Datum of 1983 (NAD83)  
World Geodetic System of 1984 (WGS84) Projection and  
1 000-meter grid: Universal Transverse Mercator, Zone 16S  
10 000-foot ticks: Alabama Coordinate System of 1983 (west zone)

Imagery: NADP, September 2009  
Roads: 6/20/06-2011  
Names: GNS, 2011  
Hydrography: National Hydrography Dataset, 2009  
Contours: National Elevation Dataset, 1999  
Boundaries: Census, IBWC, IBC, USGS, 1972 - 2010



CONTOUR INTERVAL 10 FEET  
NORTH AMERICAN VERTICAL DATUM OF 1988  
This map was produced to conform with the National Geospatial Program US Topo Product Standard, 2011. A metadata file associated with this product is draft version 0.6.0

**ROAD CLASSIFICATION**

- Interstate Route
- US Route
- Ramp
- State Route
- Local Road
- 4WD

**QUADRANGLE LOCATION**

Durant Bend	Autaugusville	Forester
Benton	White Hall	Lowdesboro
Collinsville	Gordonville	Hughesville

ADJOINING 7.5 QUADRANGLES

**WHITE HALL, AL**  
2011