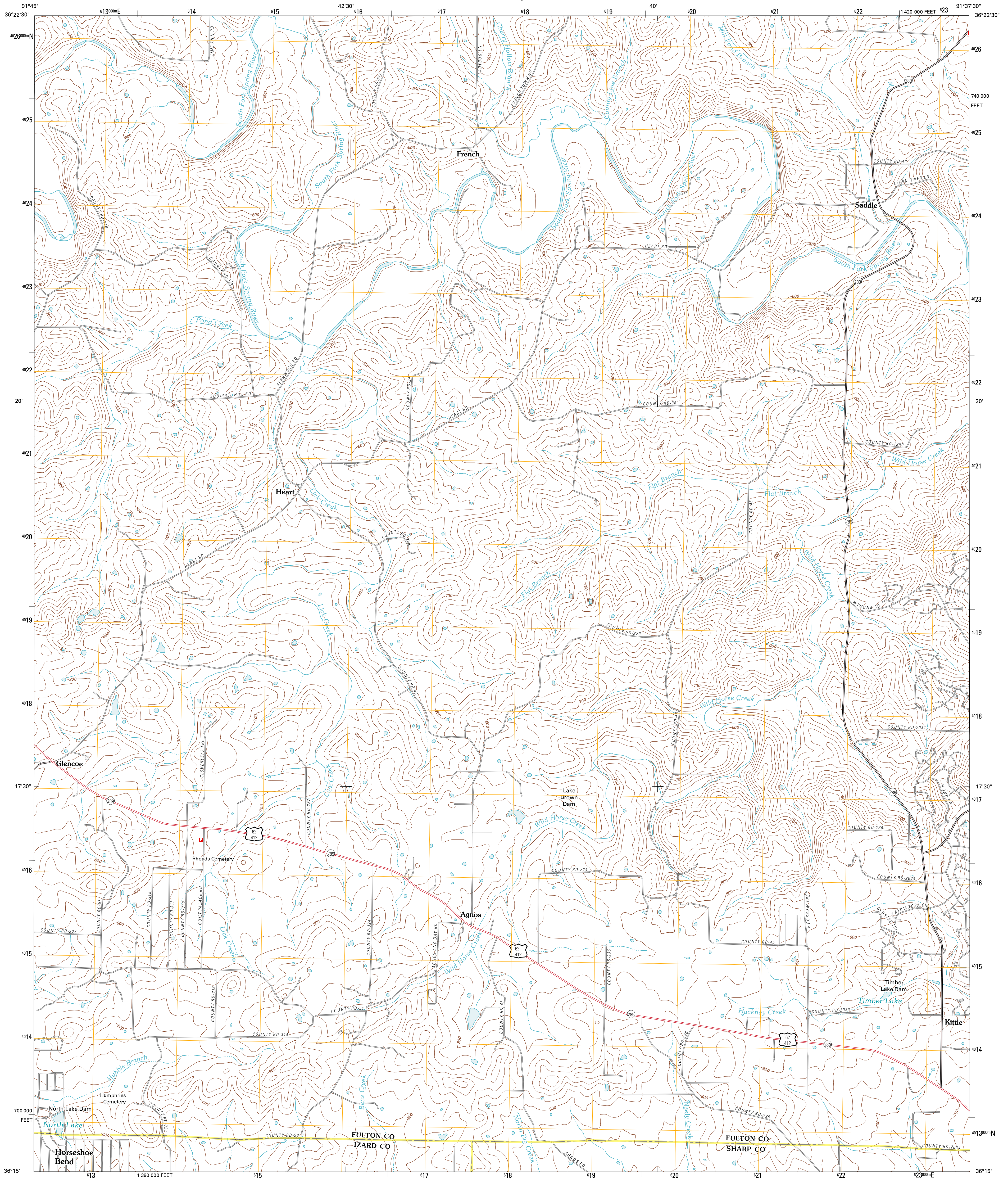




U.S. DEPARTMENT OF THE INTERIOR
U. S. GEOLOGICAL SURVEY

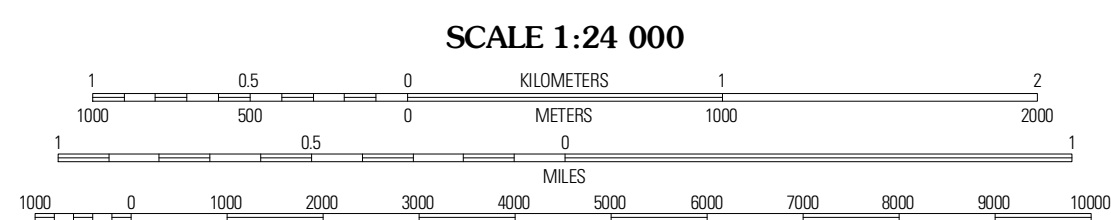
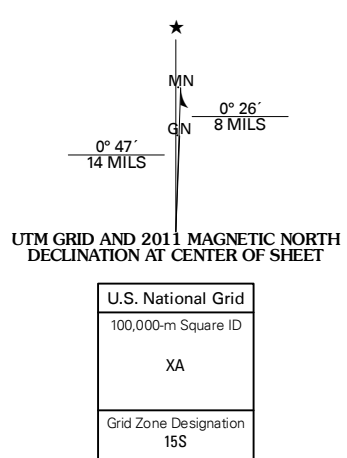


AGNOS QUADRANGLE
ARKANSAS
7.5-MINUTE SERIES

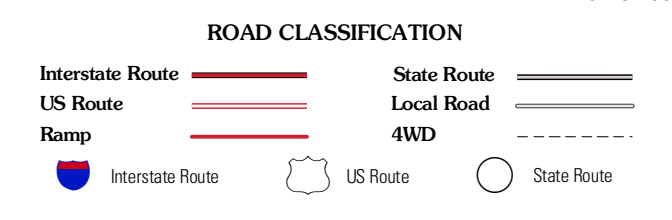


Produced by the United States Geological Survey
North American Datum of 1983 (NAD83)
World Geodetic System of 1984 (WGS84) Projection and
1 000-meter grid; Universal Transverse Mercator, Zone 15S
10 000-foot ticks; Arkansas Coordinate System of 1983
(north zone)

Imagery.....NAP, August 2009
Roads.....©2006-2010 Tele Atlas
Names.....©2010 GNS, 2010
Hydrography.....National Hydrography Dataset, 2009
Contours.....National Elevation Dataset, 1999
Boundaries.....Census, IBWC, IBC, USGS, 1972 - 2010



CONTOUR INTERVAL 20 FEET
NORTH AMERICAN VERTICAL DATUM OF 1988
This map was produced to conform with version 0.5.10
of the USGS US Topo Product Standard.
A metadata file associated with this product is draft version 0.5.16



QUADRANGLE LOCATION

Salem Knob	Camp	Mammoth Spring
Salem	Agnos	Stuart
Franklin	Myron	Ash Flat

AGNOS, AR
2011

ADJOINING 7.5' QUADRANGLES