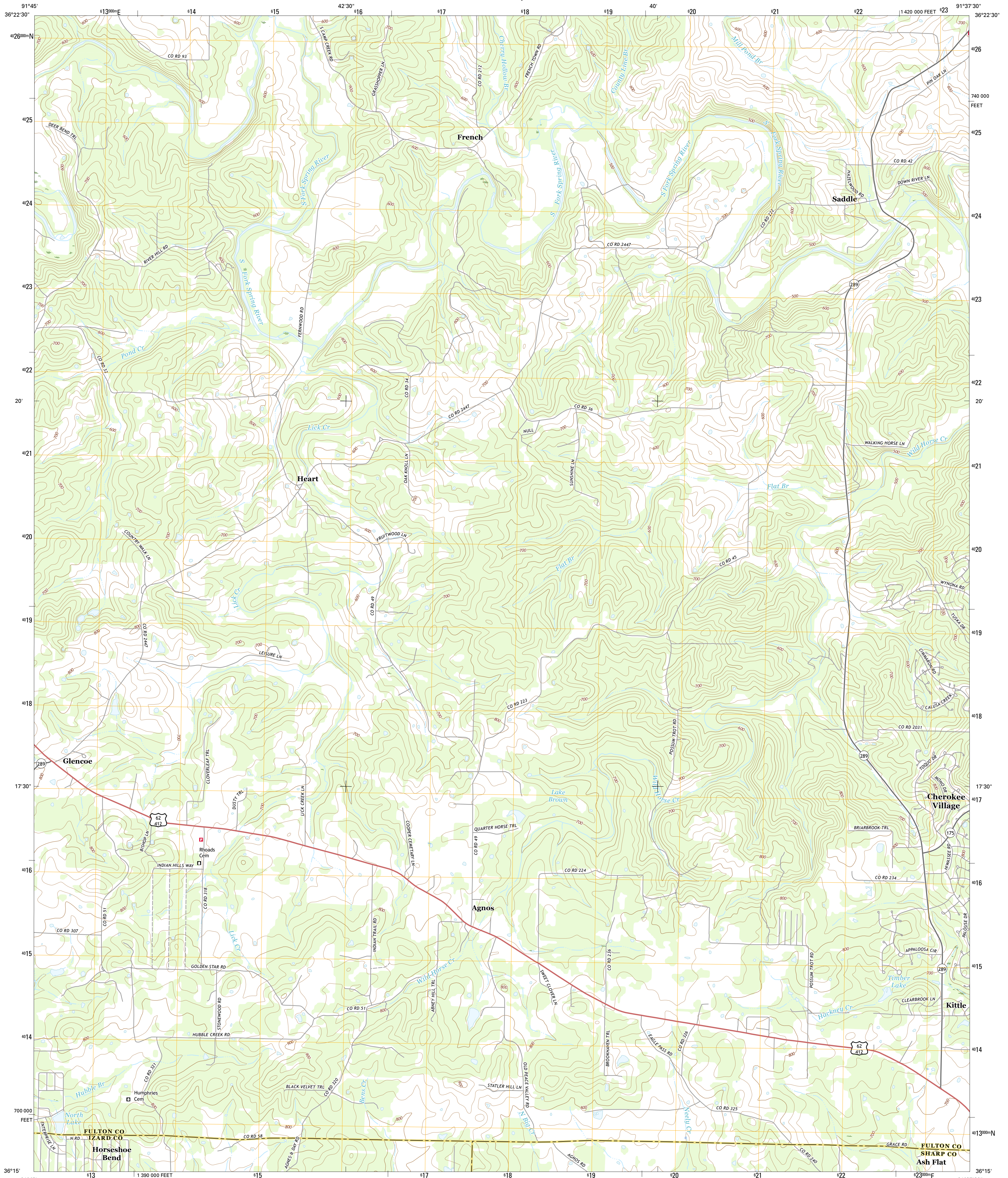




U.S. DEPARTMENT OF THE INTERIOR
U.S. GEOLOGICAL SURVEY



AGNOS QUADRANGLE
ARKANSAS
7.5-MINUTE SERIES

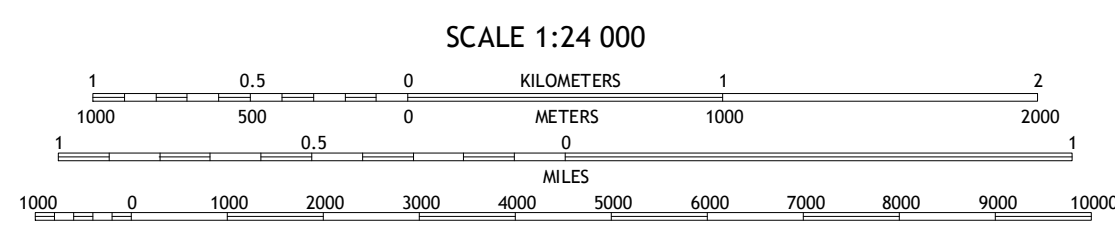
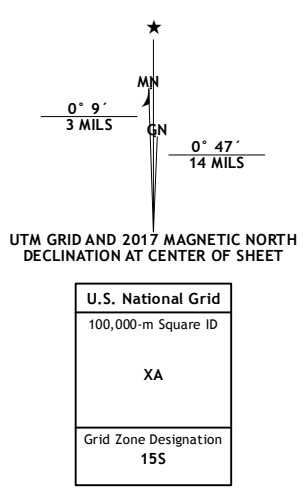


Produced by the United States Geological Survey

North American Datum of 1983 (NAD83)
World Geodetic System of 1984 (WGS84), Projection and
1 000-meter grid; Universal Transverse Mercator, Zone 15S
10 000-foot ticks; Arkansas Coordinate System of 1983 (north
zone)

This map is not a legal document. Boundaries may be
generalized for this map scale. Private lands within government
reservations may not be shown. Obtain permission before
entering private lands.

Imagery.....NAIP, December 2015
Roads.....U.S. Census Bureau, 2015 - 2016
Names.....GNIS, 2016
Hydrography.....National Hydrography Dataset, 2015
Contours.....National Elevation Dataset, 1999
Boundaries.....Multiple sources; see metadata file 1972 - 2016
Public Land Survey System.....BLM, 2015
Wetlands.....FWS National Wetlands Inventory 1977 - 2014



ROAD CLASSIFICATION

Expressway	Local Connector
Secondary Hwy	Local Road
Ramp	4WD
Interstate Route	US Route
	State Route

ADJOINING QUADRANGLES

1	2	3
4	5	
6	7	8

- Salem Knob
- Camp
- Mammoth Spring
- Salem
- Stuart
- Franklin
- Myron
- Ash Flat

AGNOS, AR
2017



NSN 7540-01-6-0000-2
USGS X 2 4 K 6 9 1 3 6
NGA REF NO. U.S.G.S.X.2.4.K.6.9.1.3.6