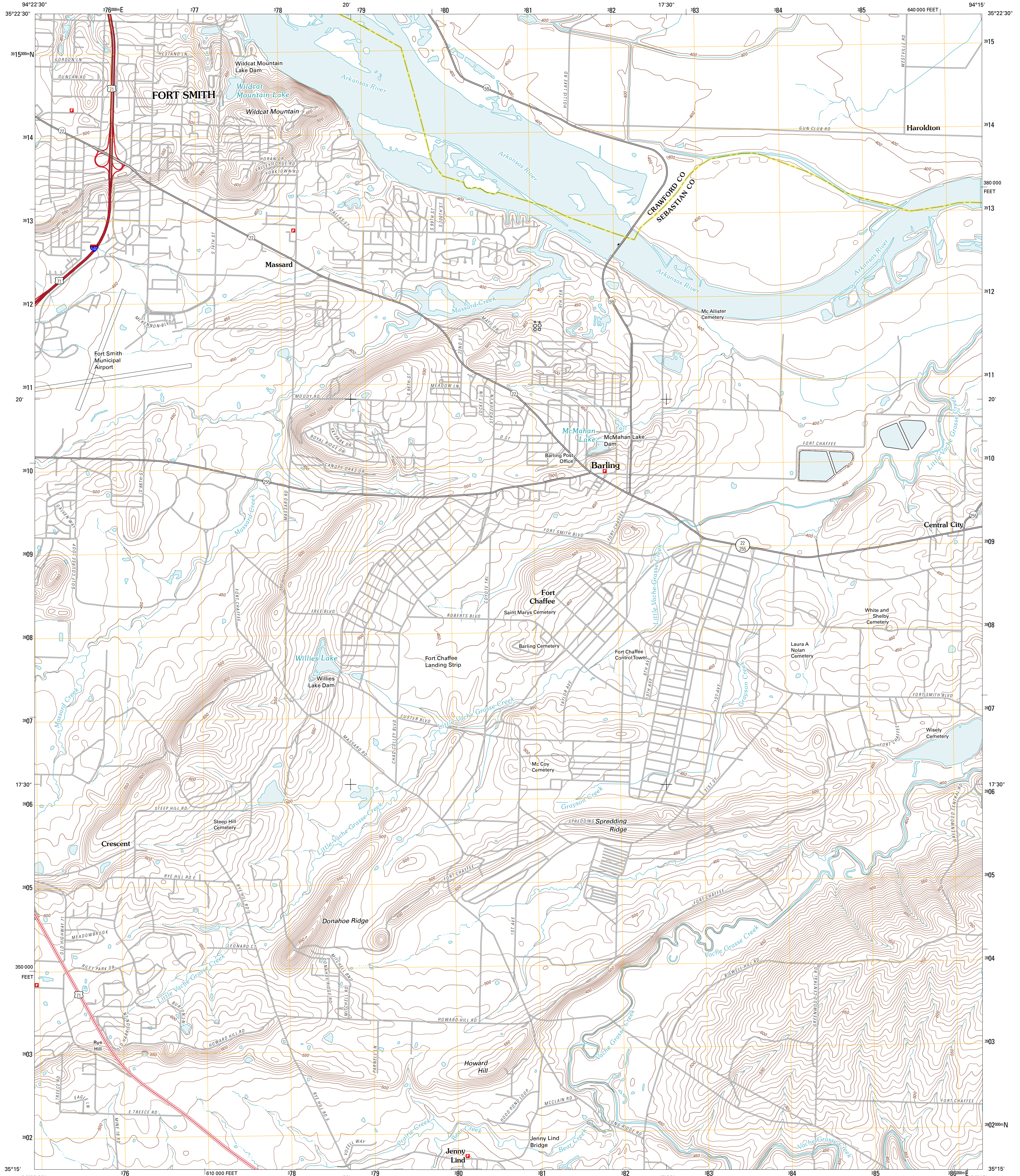




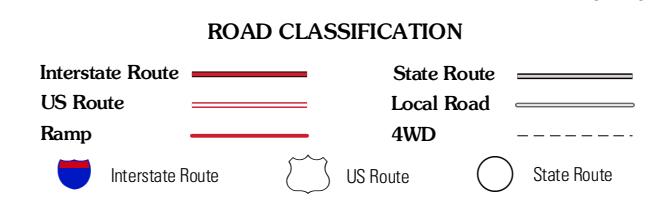
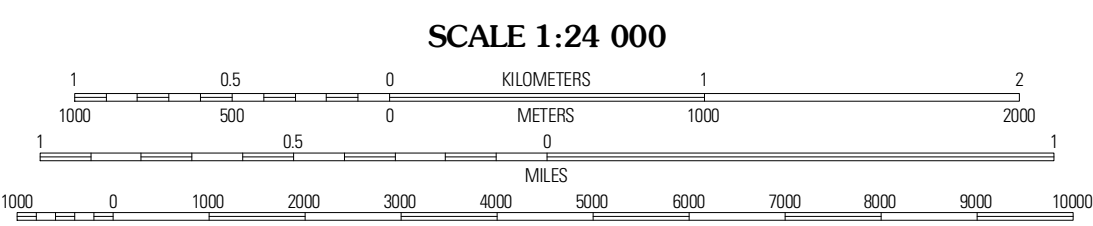
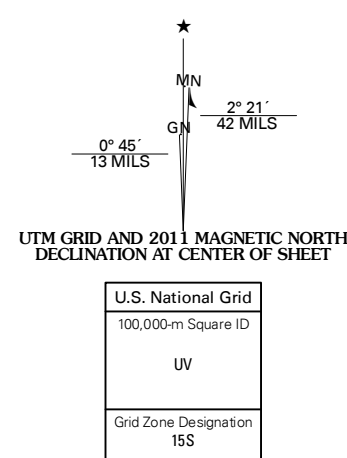
U.S. DEPARTMENT OF THE INTERIOR
U. S. GEOLOGICAL SURVEY



BARLING QUADRANGLE
ARKANSAS
7.5-MINUTE SERIES



Produced by the United States Geological Survey
North American Datum of 1983 (NAD83)
World Geodetic System of 1984 (WGS84). Projection and
1 000-meter grid: Universal Transverse Mercator, Zone 15S
10 000-foot ticks: Arkansas Coordinate System of 1983
(north zone)



QUADRANGLE LOCATION

Fort Smith	Van Buren	Alma
South Fort Smith	Barling	Lawaca
Hackett	Greenwood	Barnside

CONTOUR INTERVAL 10 FEET
NORTH AMERICAN VERTICAL DATUM OF 1988

This map was produced to conform with version 0.5.10 of the USGS US Topo Product Standard.
A metadata file associated with this product is draft version 0.5.16

BARLING, AR
2011

ADJOINING 7.5 QUADRANGLES