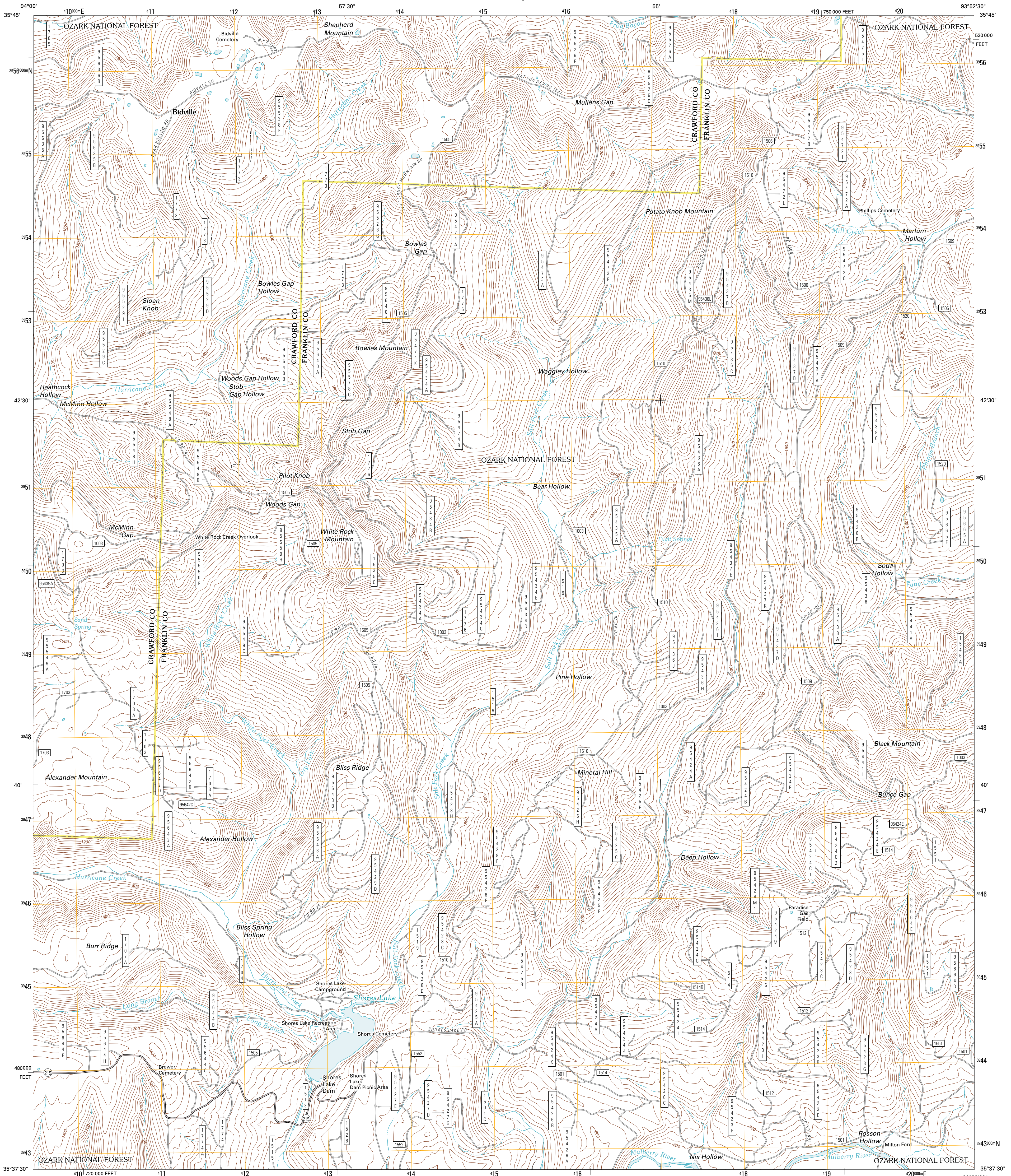




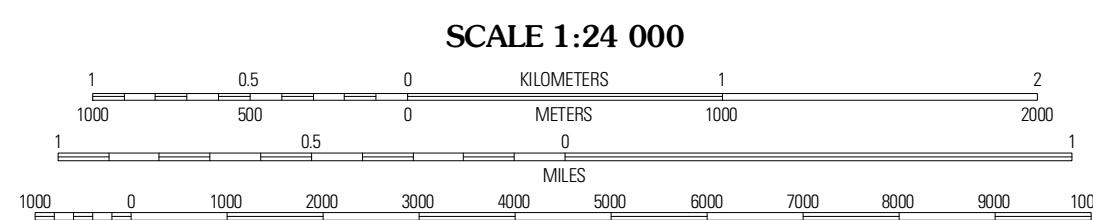
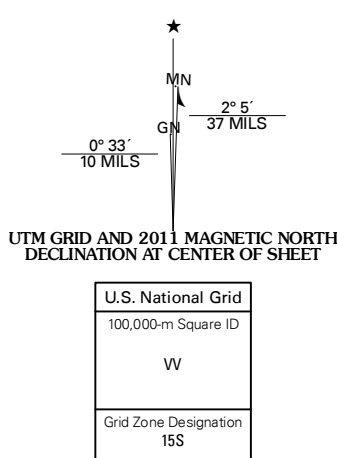
U.S. DEPARTMENT OF THE INTERIOR
U. S. GEOLOGICAL SURVEY



BIDVILLE QUADRANGLE
ARKANSAS
7.5-MINUTE SERIES



Produced by the United States Geological Survey
North American Datum of 1983 (NAD83)
World Geodetic System of 1984 (WGS84). Projection and
10 000-foot ticks: Arkansas Coordinate System of 1983
(north zone)



CONTOUR INTERVAL 40 FEET
NORTH AMERICAN VERTICAL DATUM OF 1988
This map was produced to conform with version 0.5.10
of the USGS US Topo Product Standard.
A metadata file associated with this product is draft version 0.5.16



QUADRANGLE LOCATION

Brentwood	Delaney	Saint Paul
Fern	Bidville	Cass
Mountainburg SE	Crawens	Washala

ROAD CLASSIFICATION

- Interstate Route (thick red line)
- US Route (red line)
- Ramp (red line with blue triangle)
- State Route (thin red line)
- Local Road (black line)
- 4WD (dashed black line)
- US Route (circle with 'U')
- FS Primary Route (circle with 'F')
- FS Passenger Route (circle with 'P')
- FS High Clearance Route (circle with 'H')

Check with local Forest Service unit for current travel conditions and restrictions.

BIDVILLE, AR
2011

ADJOINING 7.5 QUADRANGLES

Imagery:.....NAP, August 2009 - September 2009
Roads:.....©2006-2010 Tele Atlas
Roads within US Forest Service Lands:.....FS Topo Data
with limited Forest Service updates, 2009
Names:.....GNIS, 2010
Hydrography:.....National Hydrography Dataset, 2009
Contours:.....National Elevation Dataset, 2000
Boundaries:.....Census, BWC, IBC, USGS, 1972 - 2010