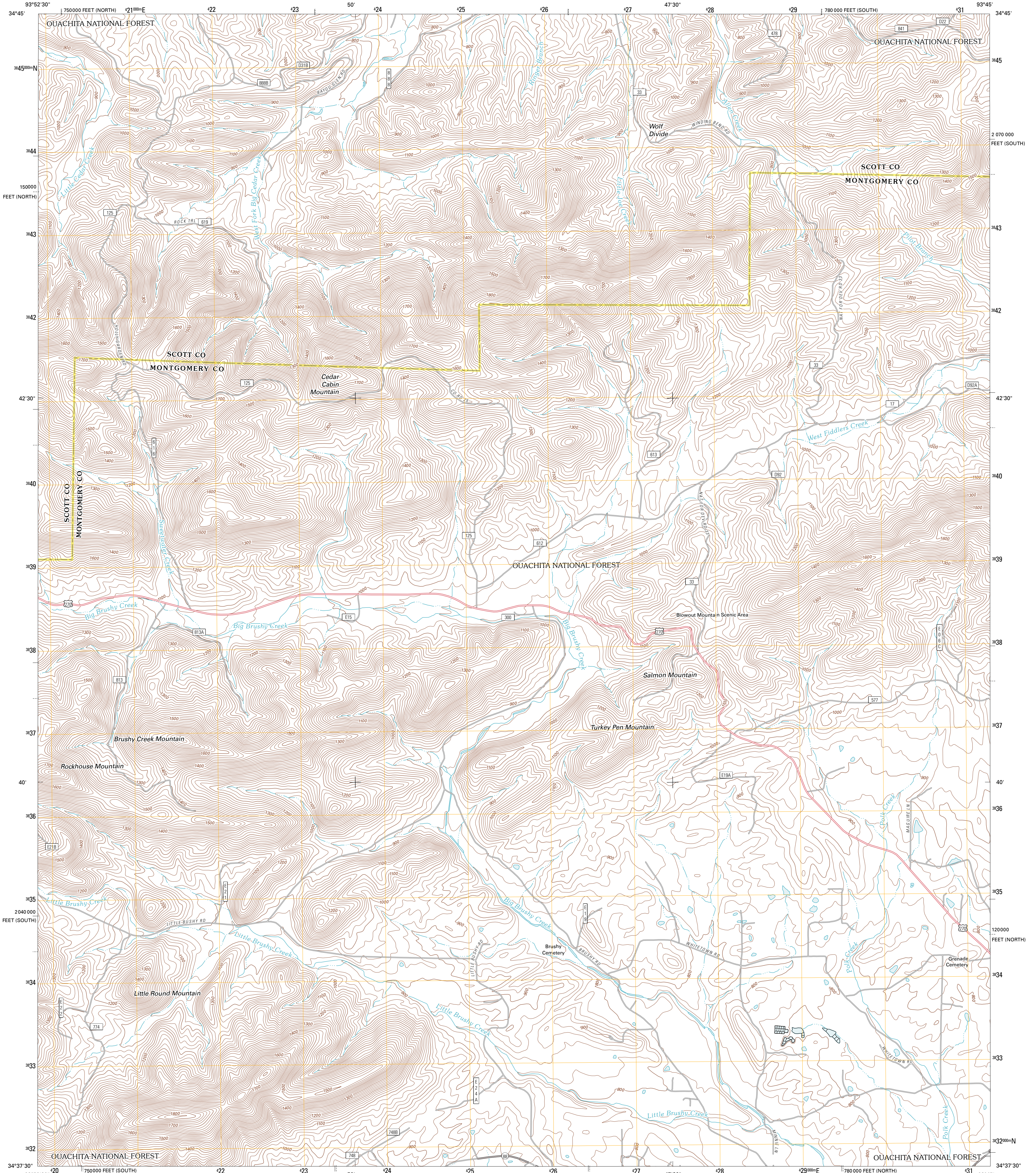




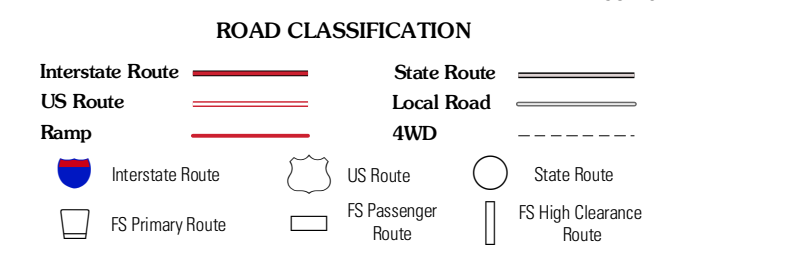
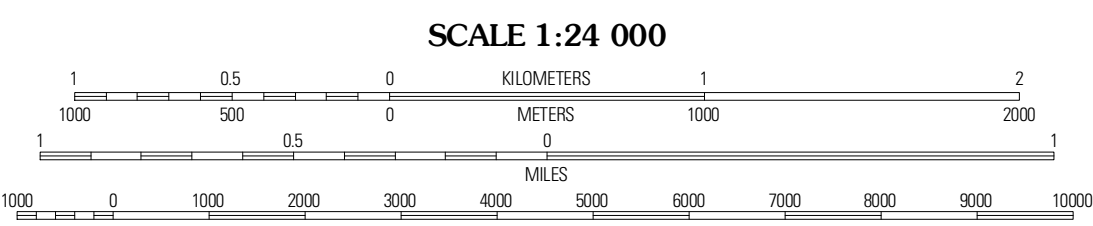
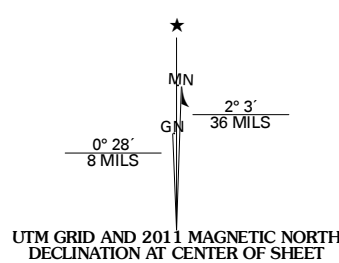
U.S. DEPARTMENT OF THE INTERIOR  
U. S. GEOLOGICAL SURVEY



BRUSHY CREEK MOUNTAIN QUADRANGLE  
ARKANSAS  
7.5-MINUTE SERIES



Produced by the United States Geological Survey  
North American Datum of 1983 (NAD83)  
World Geodetic System of 1984 (WGS84). Projection and  
10 000-foot ticks: Arkansas Coordinate System of 1983  
(south and north zones)



QUADRANGLE LOCATION

Parks	Harvey	Little Texas
Buck Knob	Brushy Creek Mountain	Sims
Pine Ridge	Oden	Mount Ida

Imagery:.....NAP, September 2009  
Roads:.....©2006-2010 Tele Atlas  
Roads within US Forest Service Lands:.....FS Topo Data  
with limited Forest Service updates, 2009  
Names:.....GNIS, 2010  
Hydrography:.....National Hydrography Dataset, 2009  
Contours:.....National Elevation Dataset, 2002  
Boundaries:.....Census, IBWC, IBC, USGS, 1972 - 2010

U.S. National Grid

100,000m Square ID	VU
Grid Zone Designation	18S

CONTOUR INTERVAL 20 FEET  
NORTH AMERICAN VERTICAL DATUM OF 1988  
This map was produced to conform with version 0.5.10  
of the USGS US Topo Product Standard.  
A metadata file associated with this product is draft version 0.5.16

Check with local Forest Service unit  
for current travel conditions and restrictions.

**BRUSHY CREEK MOUNTAIN, AR**  
2011

ADJOINING 7.5 QUADRANGLES