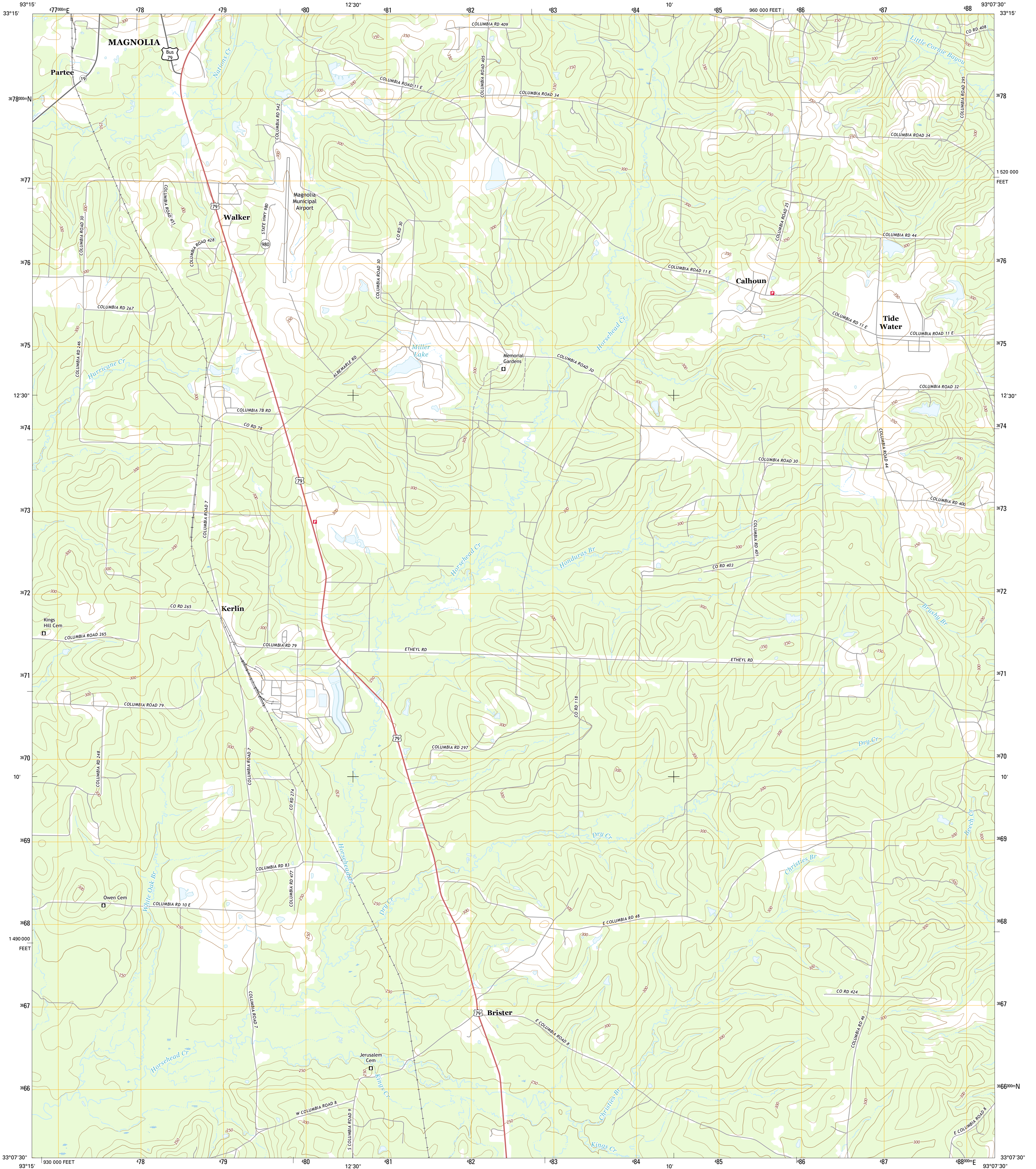




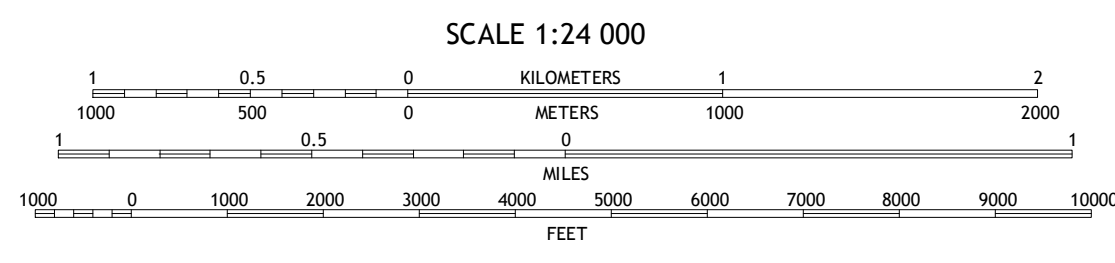
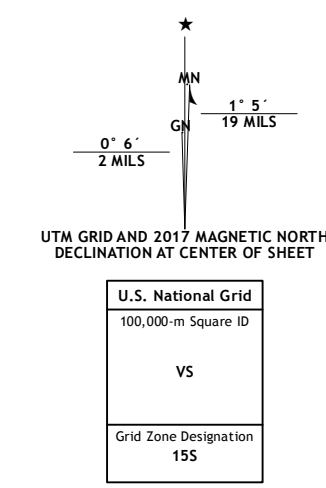
U.S. DEPARTMENT OF THE INTERIOR
U.S. GEOLOGICAL SURVEY



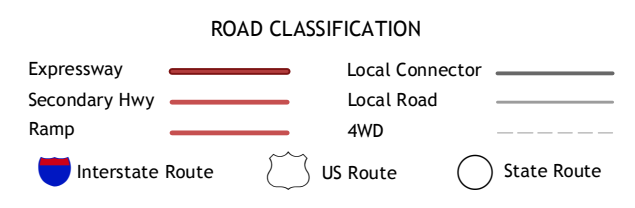
CALHOUN QUADRANGLE
ARKANSAS-COLUMBIA CO.
7.5-MINUTE SERIES



Produced by the United States Geological Survey
 North American Datum of 1983 (NAD83)
 World Geodetic System of 1984 (WGS84). Projection and
 1 000-meter grid: Universal Transverse Mercator, Zone 15S
 10 000-foot ticks: Arkansas Coordinate System of 1983 (south
 zone)
 This map is not a legal document. Boundaries may be
 generalized for this map scale. Private lands within government
 reservations may not be shown. Obtain permission before
 entering private lands.
 Imagery: NADIP, December 2015
 Roads: U.S. Census Bureau, 2015 - 2016
 Names: GNS, 2016
 Hydrography: National Hydrography Dataset, 2015
 Contours: National Elevation Dataset, 2009
 Boundaries: Multiple sources; see metadata file 1972 - 2016
 Public Land Survey System: BLM, 2015
 Wetlands: PWS National Wetlands Inventory 1977 - 2014



This map was produced to conform with the
National Geospatial Program US Topo Product Standard, 2011.
A metadata file associated with this product is draft version 0.6.19



1	2	3
4	5	6
7	8	

ADJOINING QUADRANGLES

1 Waldo
2 Magnolia
3 Willage
4 Macedonia
5 Spotville
6 Willerville
7 Emerson
8 Emerson SE

CALHOUN, AR
2017

