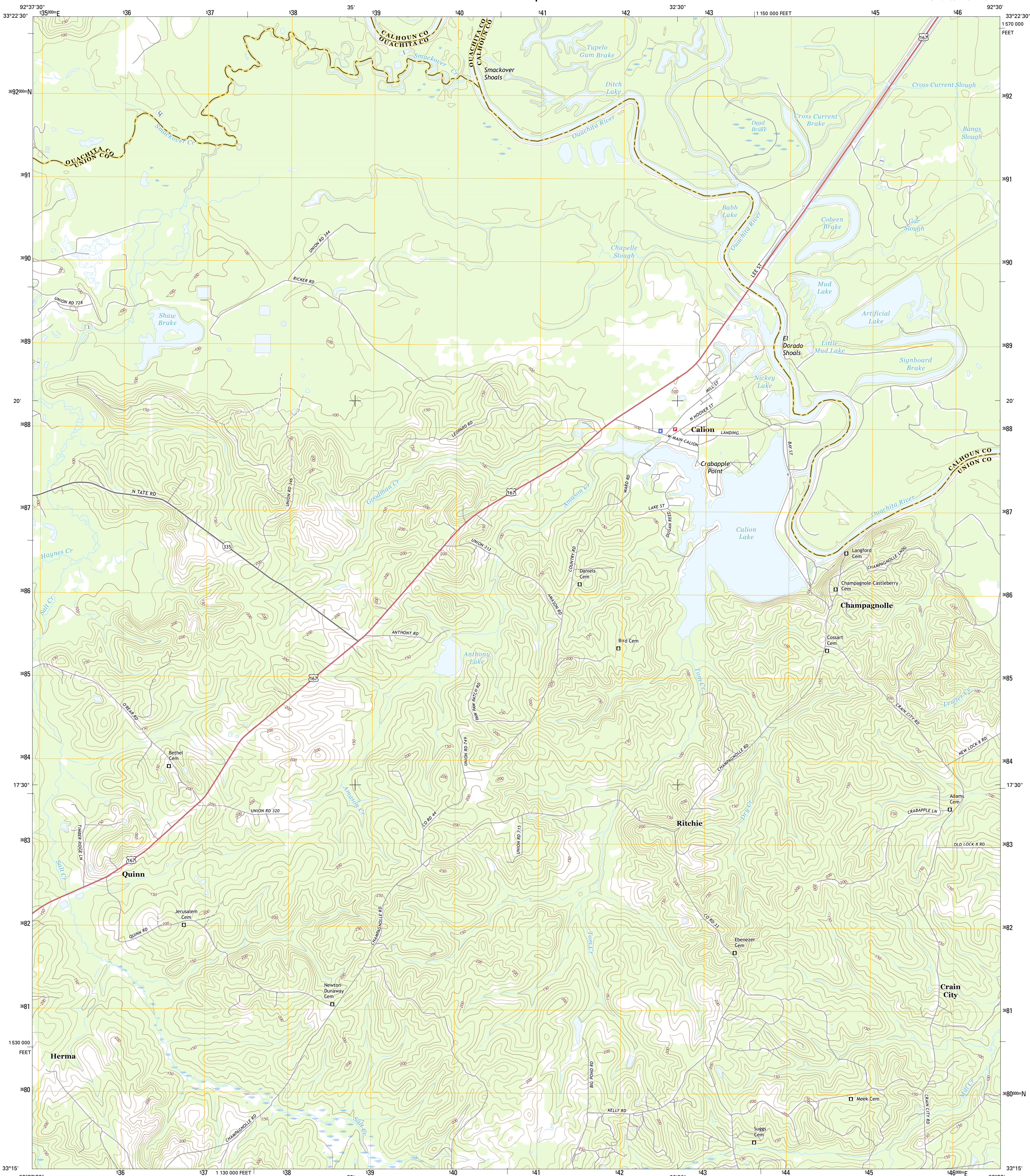




U.S. DEPARTMENT OF THE INTERIOR
U.S. GEOLOGICAL SURVEY



CALION QUADRANGLE
ARKANSAS
7.5-MINUTE SERIES

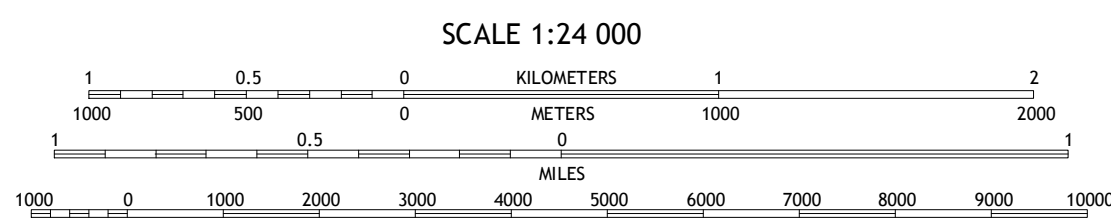
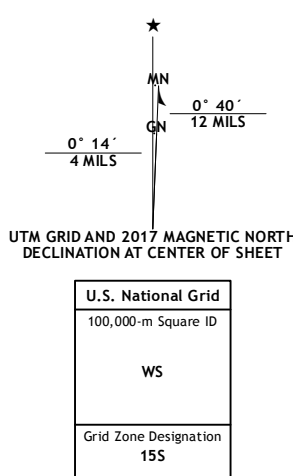


Produced by the United States Geological Survey

North American Datum of 1983 (NAD83)
World Geodetic System of 1984 (WGS84) Projection and
1 000-meter grid: Universal Transverse Mercator, Zone 15S
10 000-foot ticks: Arkansas Coordinate System of 1983 (south
zone)

This map is not a legal document. Boundaries may be
generalized for this map scale. Private lands within government
reservations may not be shown. Obtain permission before
entering private lands.

Imagery: NIP, December 2015
Roads: U.S. Census Bureau, 2015 - 2016
Names: GNIS, 2016
Hydrography: National Hydrography Dataset, 2015
Contours: National Elevation Dataset, 2009
Boundaries: Multiple sources; see metadata file 1972 - 2016
Public Land Survey System: BLM, 2015
Wetlands: FWS National Wetlands Inventory 1977 - 2014



CONTOUR INTERVAL 10 FEET
NORTH AMERICAN VERTICAL DATUM OF 1988

This map was produced to conform with the
National Geospatial Program US Topo Product Standard, 2011.
A metadata file associated with this product is draft version 0.6.19



ROAD CLASSIFICATION	
Expressway	Local Connector
Secondary Hwy	Local Road
Ramp	4WD
Interstate Route	US Route
	State Route

1	2	3	1 Snow Hill
4	5	6	2 Smackover NE
7	8	7	3 Artesian
		8	4 Smackover
			5 Harrell Brake
			6 El Dorado West
			7 El Dorado East
			8 Urbana

CALION, AR
2017

