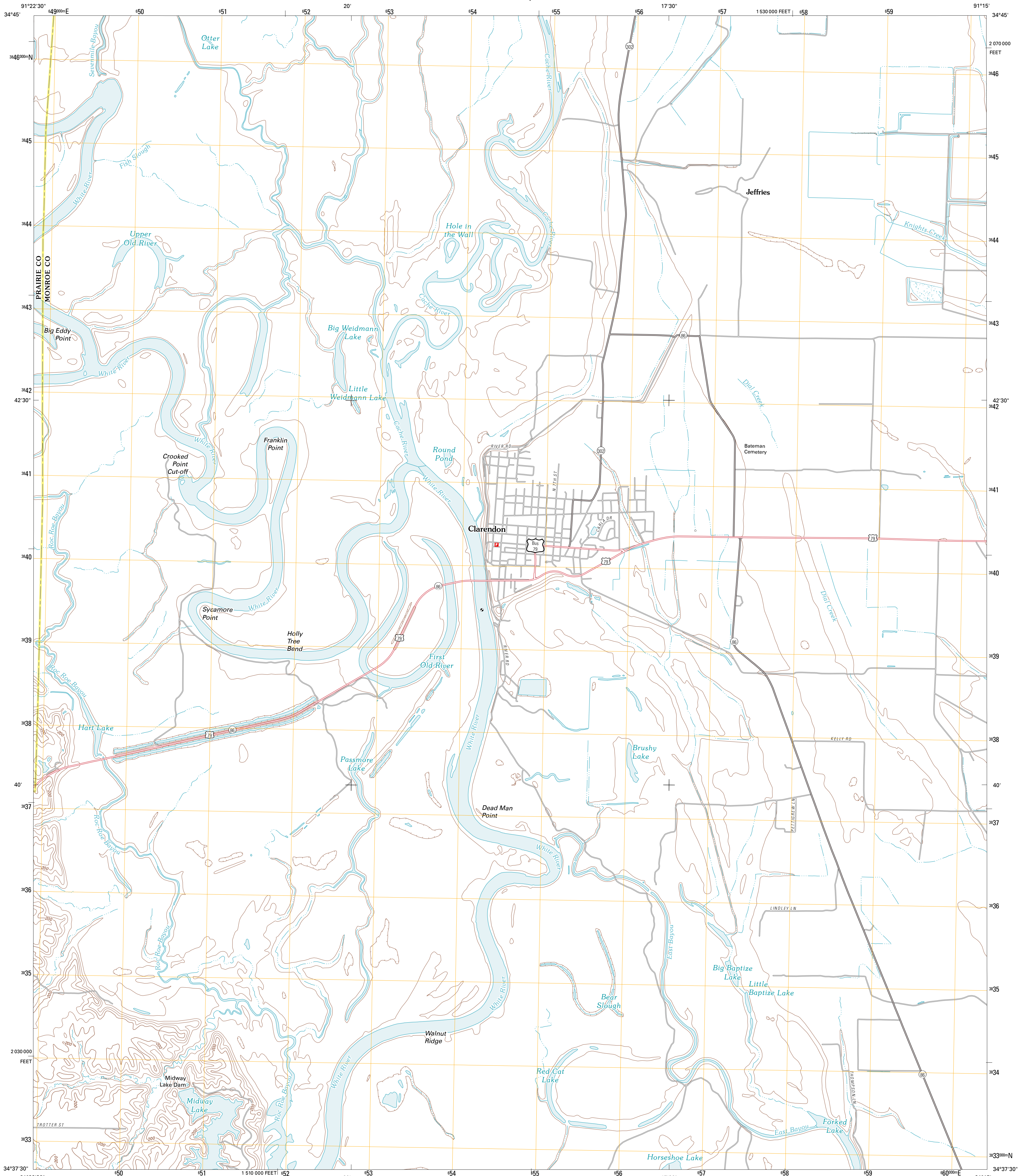




U.S. DEPARTMENT OF THE INTERIOR
U. S. GEOLOGICAL SURVEY



CLARENDON QUADRANGLE
ARKANSAS
7.5-MINUTE SERIES

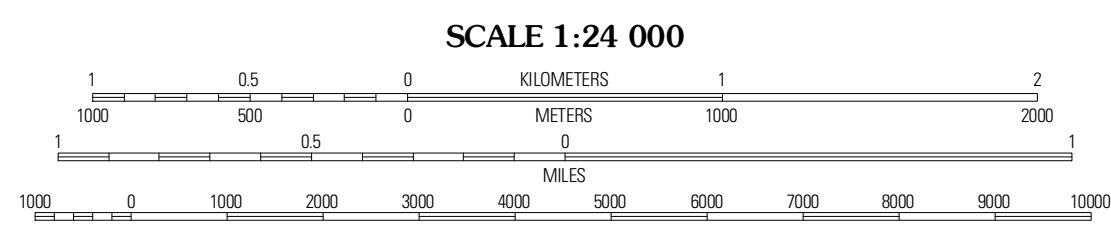


Produced by the United States Geological Survey
North American Datum of 1983 (NAD83)
World Geodetic System of 1984 (WGS84), Projection and
1 000-meter grid: Universal Transverse Mercator, Zone 15S
10 000-foot ticks: Arkansas Coordinate System of 1983
(south zone)

Imagery:.....NAIP, August 2009 - September 2009
Roads:.....©2006-2010 Tele Atlas
Names:.....©2006-2010 Tele Atlas
Hydrography:.....National Hydrography Dataset, 2009
Contours:.....National Elevation Dataset, 2000
Boundaries:.....Census, BWC, IBC, USGS, 1972 - 2010

UTM GRID AND 2011 MAGNETIC NORTH
DECLINATION AT CENTER OF SHEET

| |
|-----------------------|
| U.S. National Grid |
| 100,000m Square ID |
| XU |
| Grid Zone Designation |
| 15S |



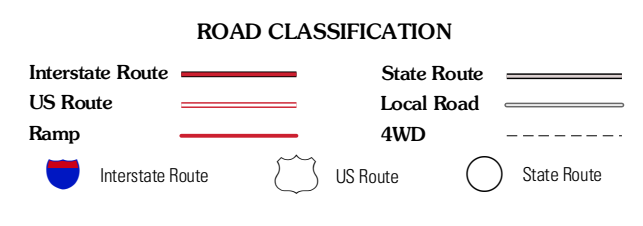
CONTOUR INTERVAL 10 FEET
NORTH AMERICAN VERTICAL DATUM OF 1988

This map was produced to conform with version 0.5.10
of the USGS US Topo Product Standard.
A metadata file associated with this product is draft version 0.5.16



QUADRANGLE LOCATION

| | | |
|-------------------|----------------------|----------------|
| De Valls Bluff | De Valls Bluff SE | Keovil |
| Roe | Clarendon | Park Grove |
| Ulin | Aberdeen | Holly Grove |



CLARENDON, AR
2011

ADJOINING 7.5 QUADRANGLES