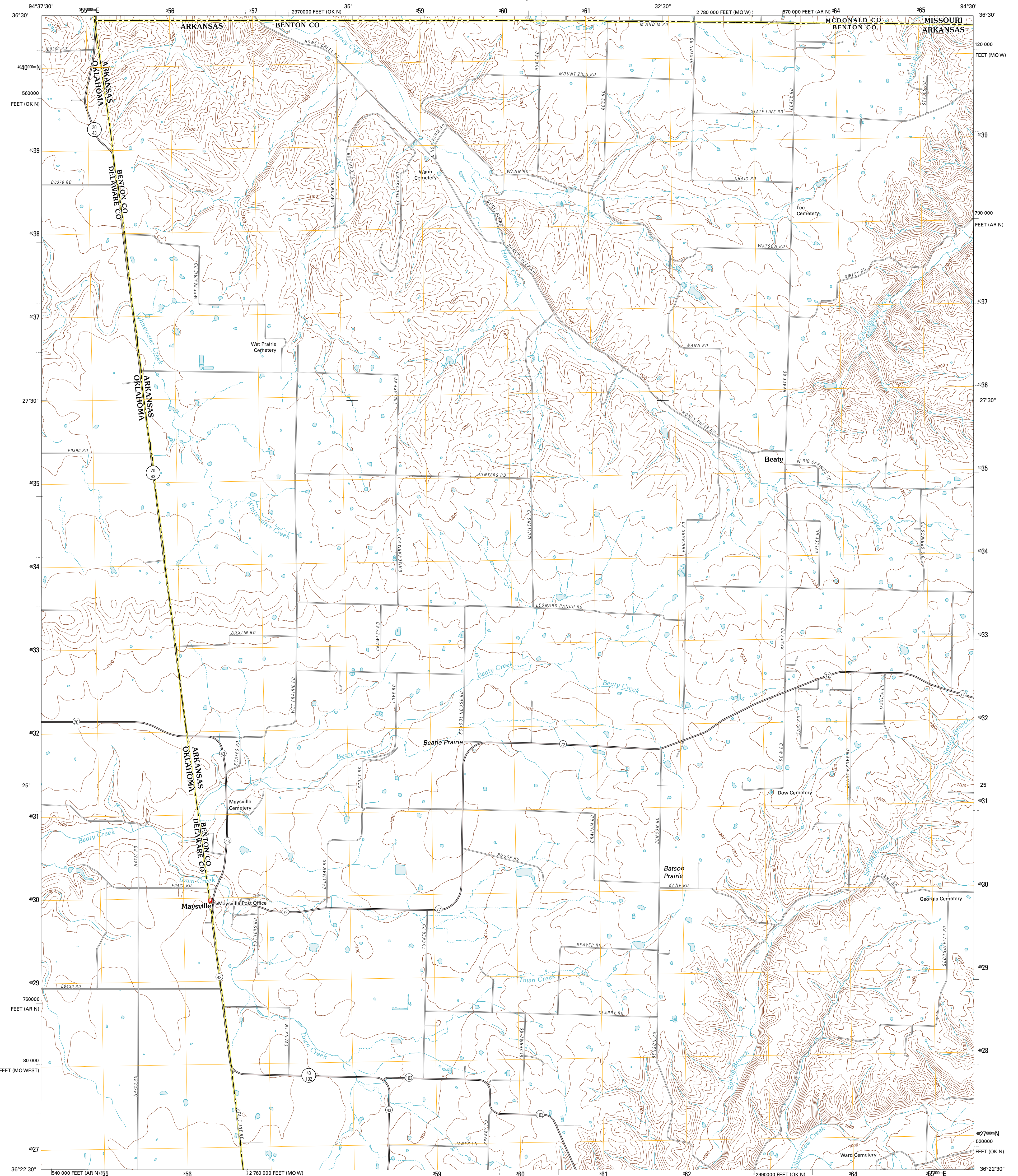




U.S. DEPARTMENT OF THE INTERIOR
U. S. GEOLOGICAL SURVEY

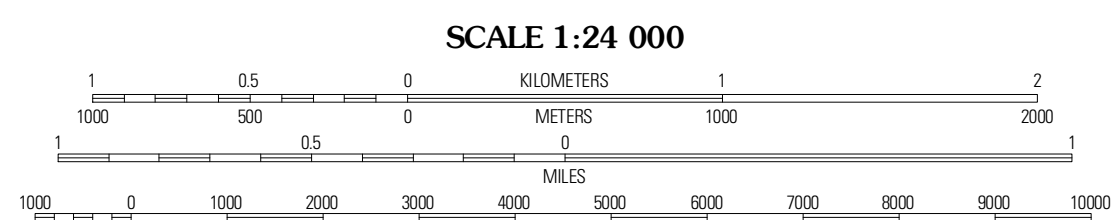
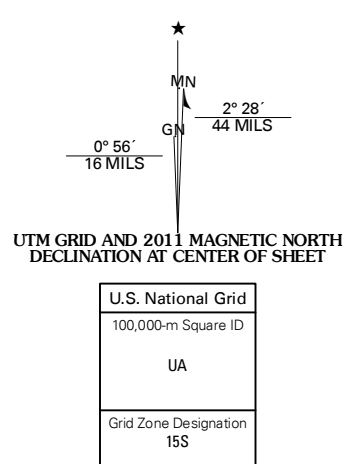


COLCORD NE QUADRANGLE
ARKANSAS-OKLAHOMA-MISSOURI
7.5-MINUTE SERIES



Produced by the United States Geological Survey
North American Datum of 1983 (NAD83)
World Geospatial System of 1984 (WGS84) Projection and
1 000-foot ticks: Universal Transverse Mercator, Zone 15S
10 000-foot ticks: Arkansas Coordinate System of 1983
(north zone), Oklahoma Coordinate System of 1983 (north
zone), Missouri Coordinate System of 1983 (west zone)

Imagery: NADP, August 2009
Roads: 02/06-2010 Tele Atlas
Names: GNS, 2010
Hydrography: National Hydrography Dataset, 2009
Contours: National Elevation Dataset, 2009
Boundaries: Census, BWC, IBC, USGS, 1972 - 2010

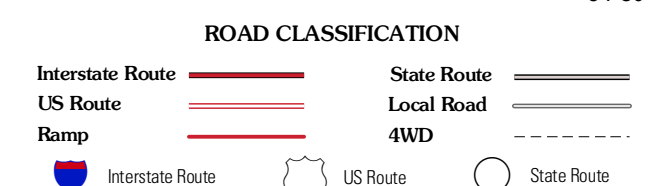


SCALE 1:24 000
CONTOUR INTERVAL 20 FEET
NORTH AMERICAN VERTICAL DATUM OF 1988
This map was produced to conform with version 0.5.10
of the USGS US Topo Product Standard.
A metadata file associated with this product is draft version 0.5.16



QUADRANGLE LOCATION

Dodge	South West City	Noel
Sycamore	Colcord NE	Grovette
Colcord	Cherokee City	Gentry



COLCORD NE, AR-OK-MO
2011

ADJOINING 7.5 QUADRANGLES