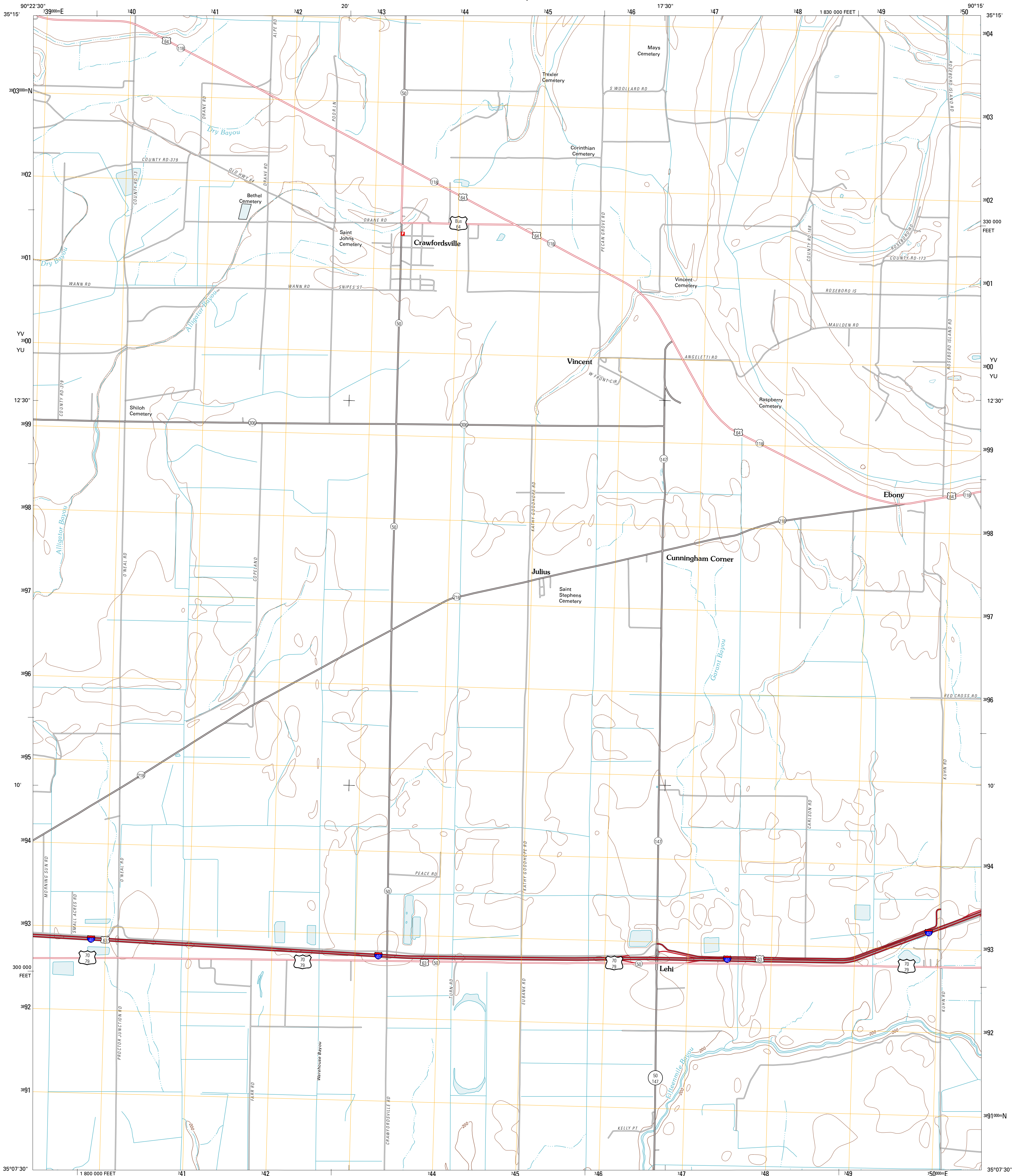




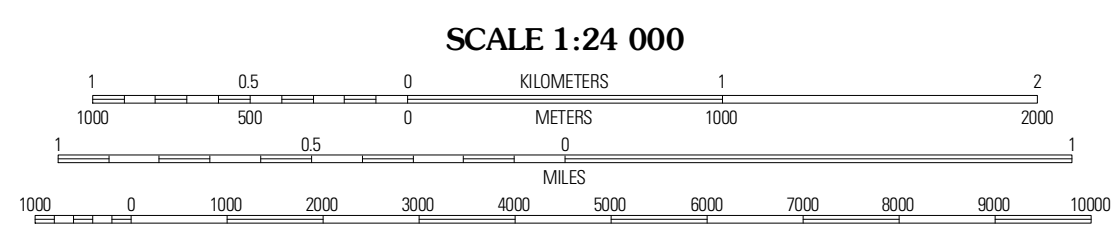
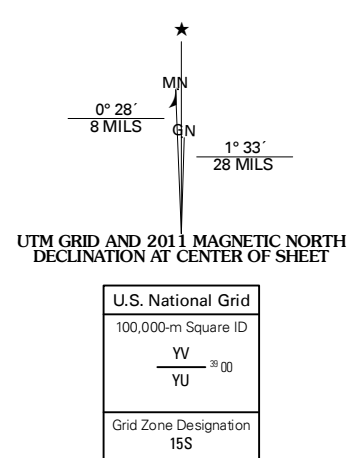
U.S. DEPARTMENT OF THE INTERIOR
U. S. GEOLOGICAL SURVEY



CRAWFORDSVILLE QUADRANGLE
ARKANSAS-CRITTENDEN CO.
7.5-MINUTE SERIES



Produced by the United States Geological Survey
North American Datum of 1983 (NAD83)
World Geodetic System of 1984 (WGS84). Projection and
1 000-meter grid; Universal Transverse Mercator, Zone 15S
10 000-foot ticks; Arkansas Coordinate System of 1983
(north zone)



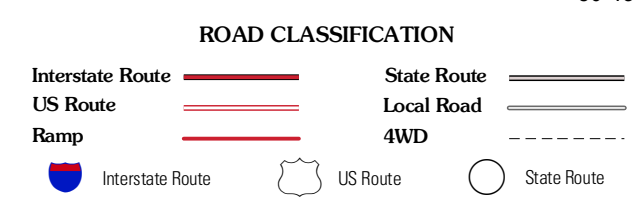
CONTOUR INTERVAL 10 FEET
NORTH AMERICAN VERTICAL DATUM OF 1988
This map was produced to conform with version 0.5.10
of the USGS US Topo Product Standard.
A metadata file associated with this product is draft version 0.5.16



QUADRANGLE LOCATION

Earle	Heeler	Jericho
Jeanette	Crawfordville	West Memphis
Charfield	Edmondson	Fletcher Lake

ADJOINING 7.5 QUADRANGLES



CRAWFORDSVILLE, AR
2011