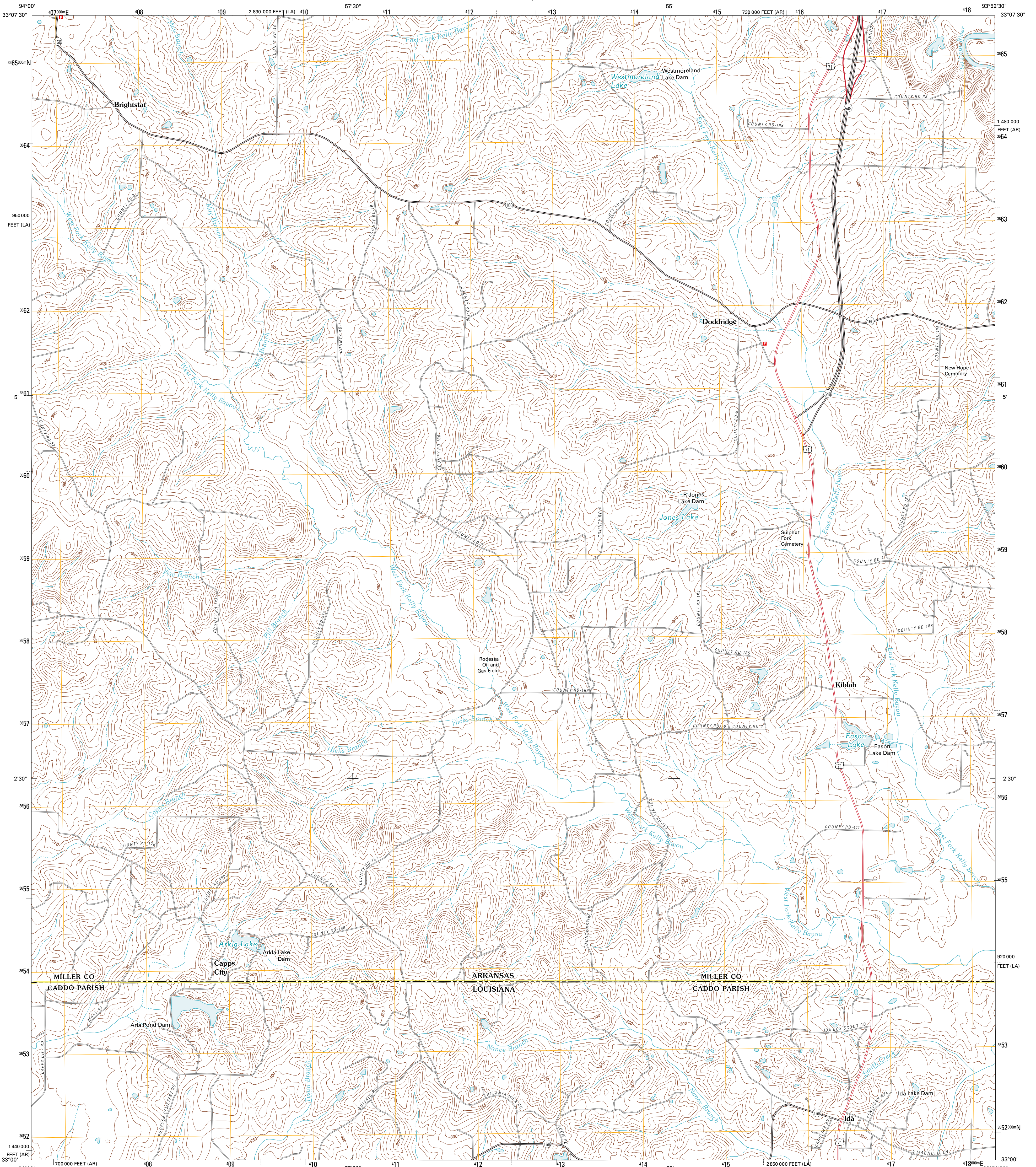




U.S. DEPARTMENT OF THE INTERIOR  
U. S. GEOLOGICAL SURVEY

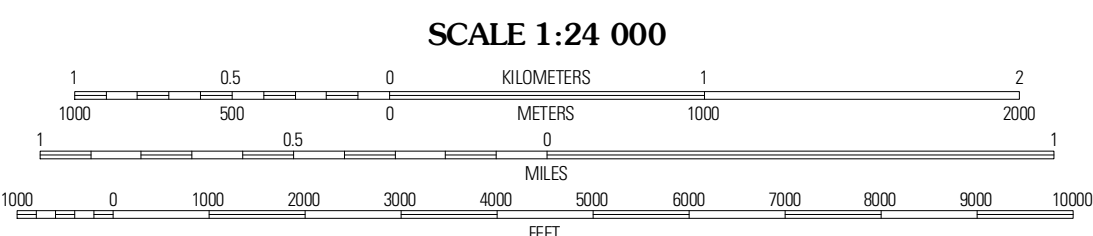
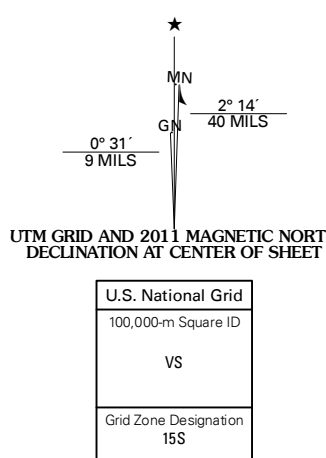


DODDRIDGE QUADRANGLE  
ARKANSAS-LOUISIANA  
7.5-MINUTE SERIES



Produced by the United States Geological Survey  
North American Datum of 1983 (NAD83)  
World Geodetic System of 1984 (WGS84), Projection and  
1 000-meter grid: Universal Transverse Mercator, Zone 15S  
10 000-foot ticks: Arkansas Coordinate System of 1983  
(south zone), Louisiana Coordinate System of 1983 (north  
zone)

Imagery: NAIP, September 2009  
Roads: ©2006-2010 Tele Atlas  
Names: GNIS, 2010  
Hydrography: National Hydrography Dataset, 2009  
Contours: National Elevation Dataset, 1999  
Boundaries: Census, IBWC, IBC, USGS, 1972 - 2010

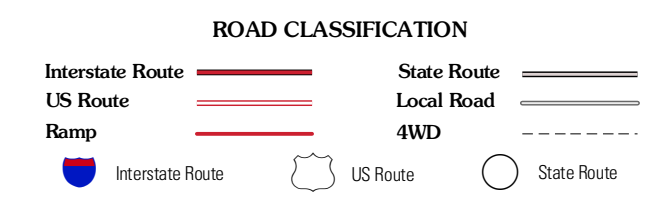


CONTOUR INTERVAL 10 FEET  
NORTH AMERICAN VERTICAL DATUM OF 1988

This map was produced to conform with version 0.5.10 of the USGS US Topo Product Standard.  
A metadata file associated with this product is draft version 0.5.16



Bloomburg	Doddridge NW	Doddridge NE
Ravanna	Doddridge	Doddridge SE
McLeod	Vivian North	Wardview



DODDRIDGE, AR-LA  
2011

ADJOINING 7.5' QUADRANGLES