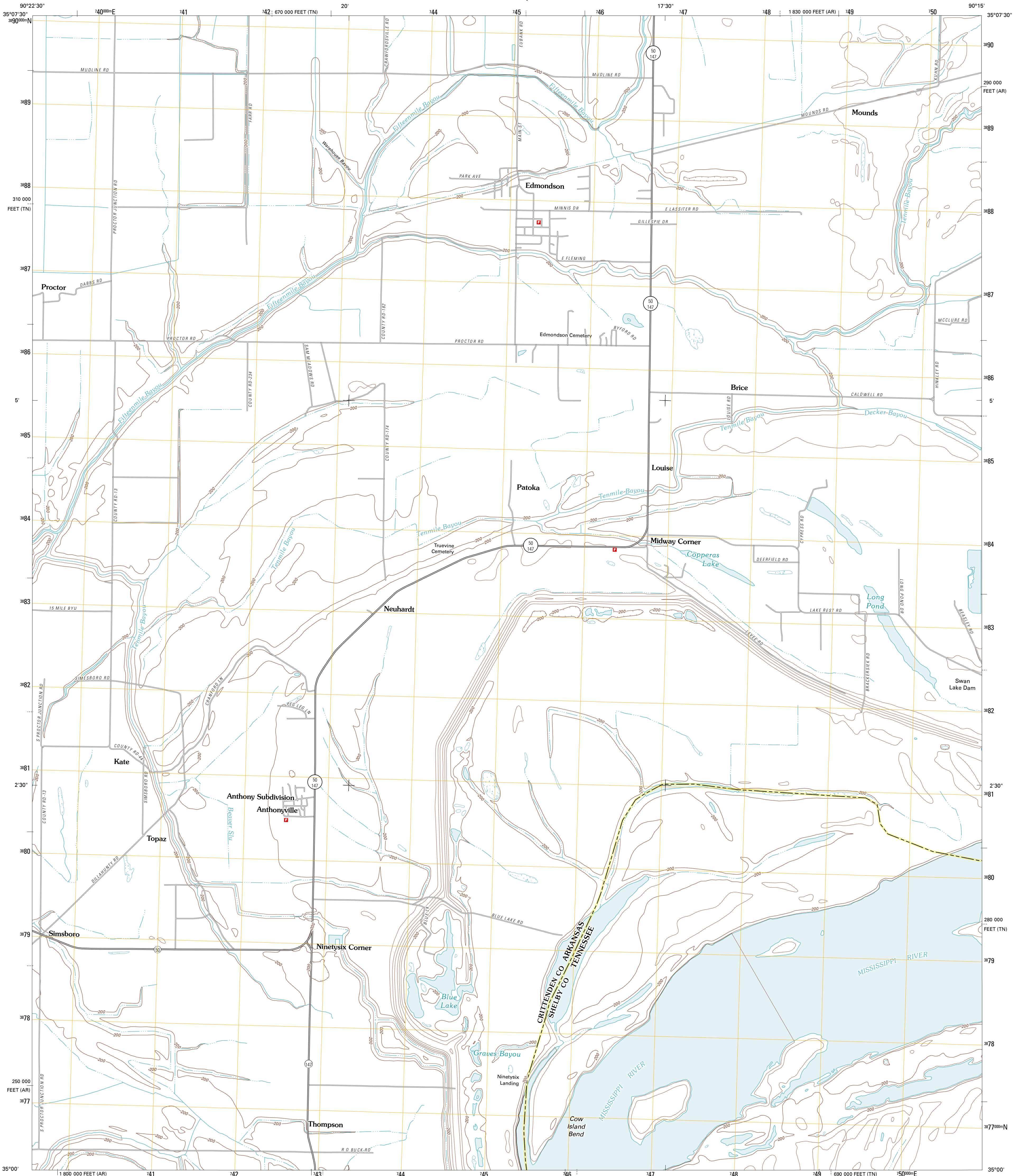




U.S. DEPARTMENT OF THE INTERIOR  
U. S. GEOLOGICAL SURVEY

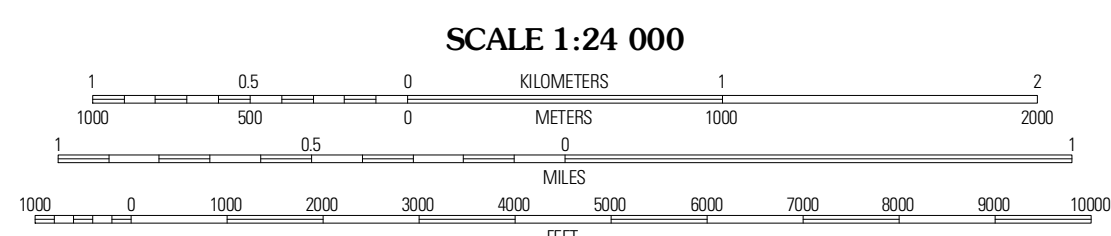
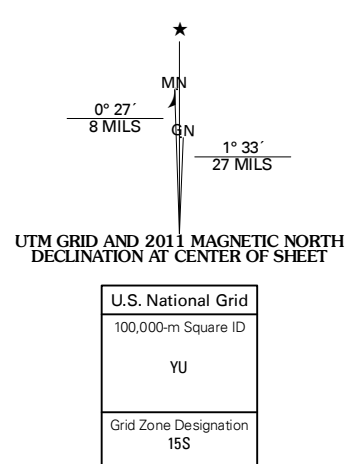


EDMONDSON QUADRANGLE  
ARKANSAS-TENNESSEE  
7.5-MINUTE SERIES



Produced by the United States Geological Survey  
North American Datum of 1983 (NAD83)  
World Geodetic System of 1984 (WGS84). Projection and  
1 000-meter grid: Universal Transverse Mercator, Zone 15S  
10 000-foot ticks: Arkansas Coordinate System of 1983  
(north zone), Tennessee Coordinate System of 1983

Imagery: NAIP, August 2009  
Roads: 2006-2010 Tele Atlas  
Names: GNS, 2010  
Hydrography: National Hydrography Dataset, 2009  
Contours: National Elevation Dataset, 2001  
Boundaries: Census, IBWC, IBC, USGS, 1972 - 2010



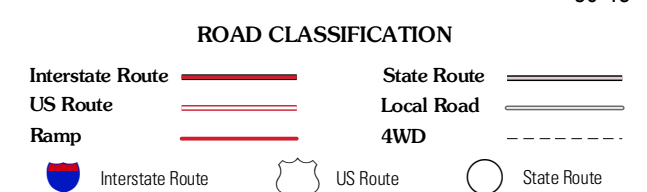
CONTOUR INTERVAL 10 FEET  
NORTH AMERICAN VERTICAL DATUM OF 1988  
This map was produced to conform with version 0.5.10  
of the USGS US Topo Product Standard.  
A metadata file associated with this product is draft version 0.5.16



QUADRANGLE LOCATION

Jeanette	Crawfordsville	West Memphis
Charfield	Edmondson	Fletcher Lake
Hughes	Horseshoe Lake	Lake Cormorant

ADJOINING 7.5 QUADRANGLES



EDMONDSON, AR-TN  
2011