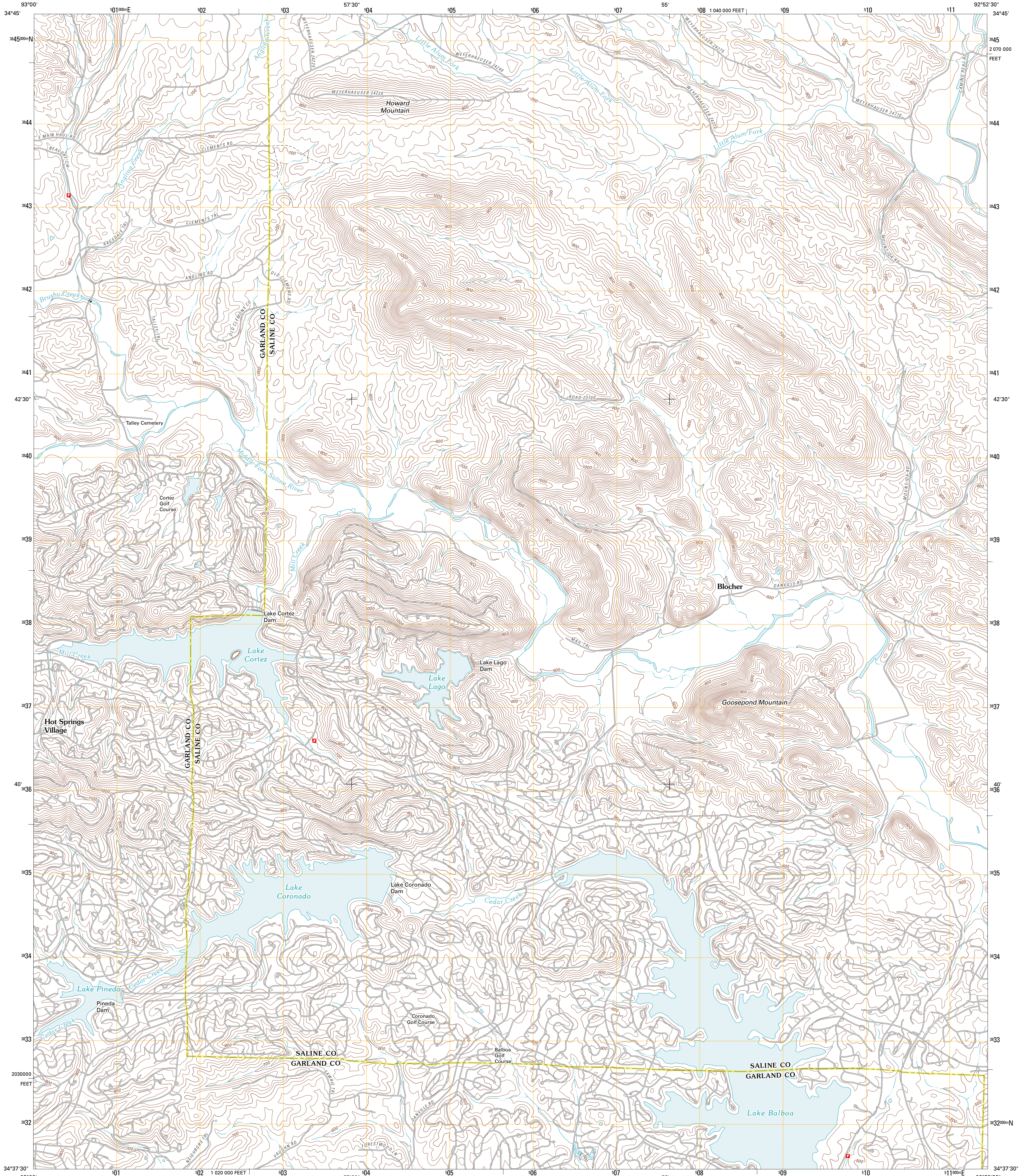




U.S. DEPARTMENT OF THE INTERIOR
U. S. GEOLOGICAL SURVEY

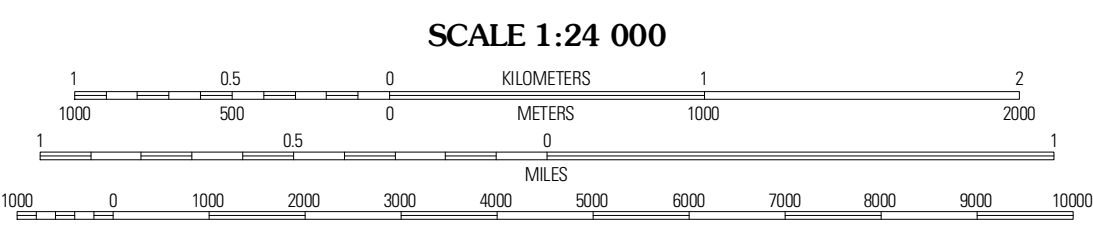
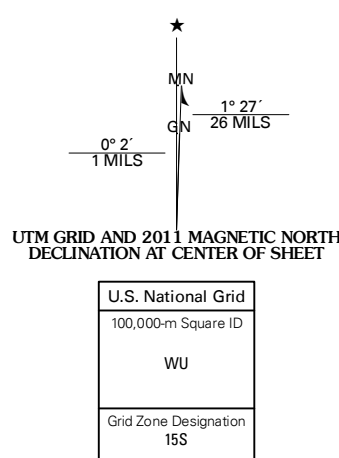


GOOSEPOND MOUNTAIN QUADRANGLE
ARKANSAS
7.5-MINUTE SERIES



Produced by the United States Geological Survey
North American Datum of 1983 (NAD83)
World Geodetic System of 1984 (WGS84), Projection and
10 000-foot ticks: Arkansas Coordinate System of 1983
(south zone)

Imagery:.....NAIP, August 2009
Roads:.....©2006-2010 Tele Atlas
Names:.....GNIS, 2010
Hydrography:.....National Hydrography Dataset, 2009
Contours:.....National Elevation Dataset, 1999
Boundaries:.....Census, IBWC, IBC, USGS, 1972 - 2010



CONTOUR INTERVAL 20 FEET
NORTH AMERICAN VERTICAL DATUM OF 1988

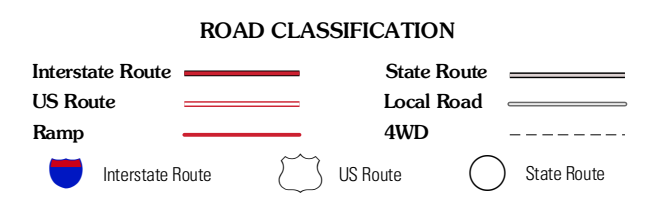
This map was produced to conform with version 0.5.10
of the USGS US Topo Product Standard.
A metadata file associated with this product is draft version 0.5.16



QUADRANGLE LOCATION

Nimrod SE	Phon SW	Phon
Jessieville	Goosepond Mountain	Lonsdale NE
Hot Springs North	Fountain Lake	Lonsdale

ADJOINING 7.5 QUADRANGLES



GOOSEPOND MOUNTAIN, AR
2011