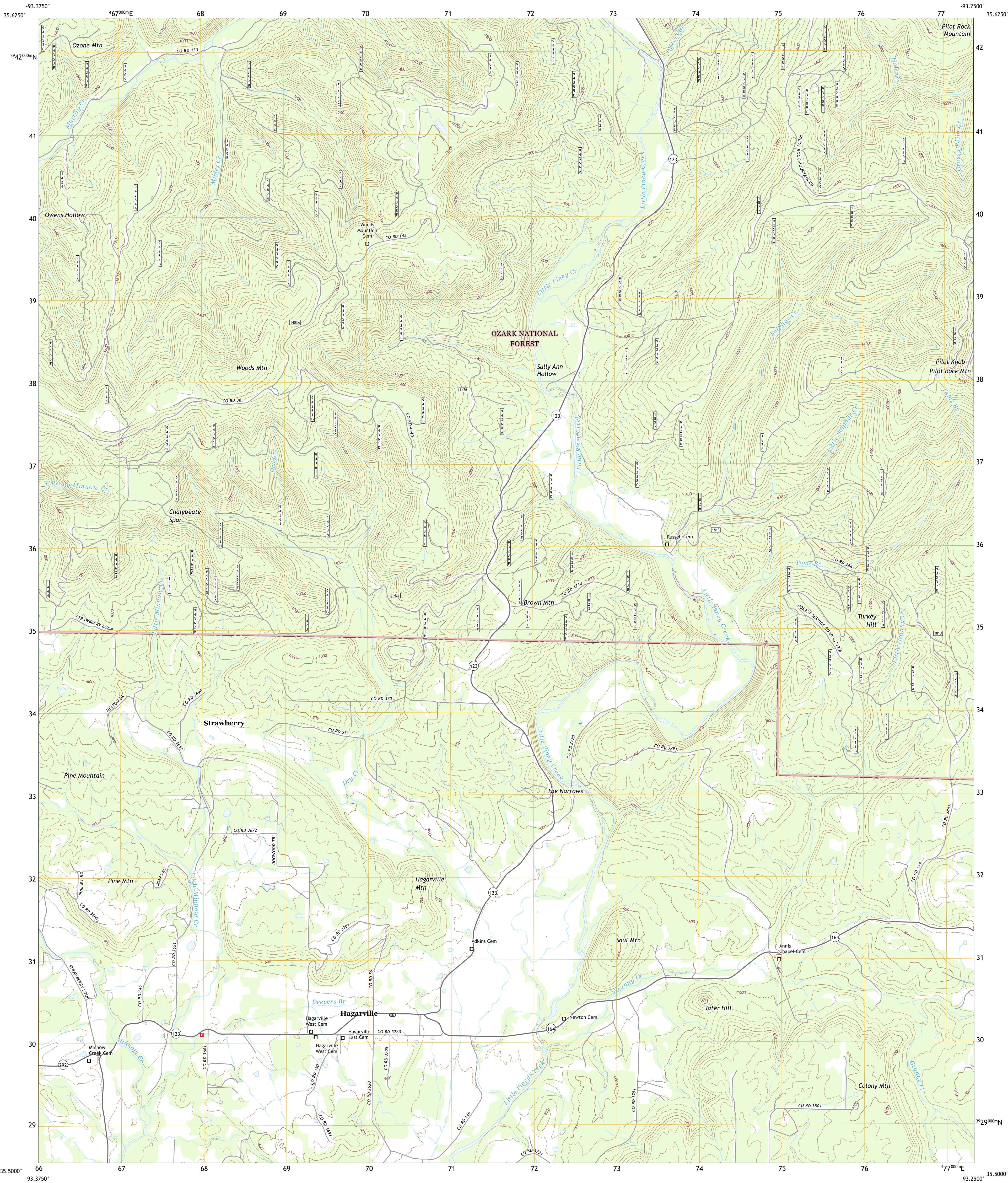




U.S. DEPARTMENT OF THE INTERIOR
U.S. GEOLOGICAL SURVEY



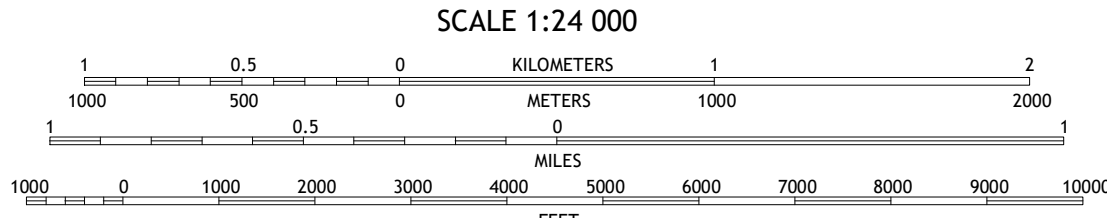
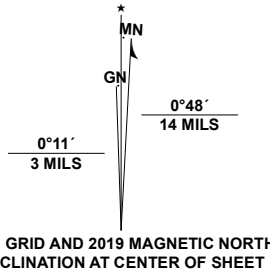
HAGARVILLE QUADRANGLE
ARKANSAS - JOHNSON COUNTY
7.5-MINUTE SERIES



Produced by the United States Geological Survey

North American Datum of 1983 (NAD83)
World Geodetic System of 1984 (WGS84). Projection and
1 000-meter grid/Universal Transverse Mercator, Zone 15S
This map is not a legal document. Boundaries may be
generalized for this map scale. Private lands within government
reservations may not be shown. Obtain permission before
entering private lands.

Imagery.....NAIP, September 2017 - November 2017
Roads.....2017
Roads within US Forest Service Lands.....FSTopo Data
with limited Forest Service updates, 2014 - 2017
Names.....GNS, 1980 - 2020
Hydrography.....National Hydrography Dataset, 2002 - 2019
Contours.....National Elevation Dataset, 2017
Boundaries.....Multiple sources; see metadata file 2018 - 2019
Public Land Survey System.....BLM, 2018
Wetlands.....FWS National Wetlands Inventory 1984 - 1985



CONTOUR INTERVAL 40 FEET
NORTH AMERICAN VERTICAL DATUM OF 1988
This map was produced to conform with the
National Geospatial Program US Topo Product Standard, 2011.
A metadata file associated with this product is draft version 0.6.18



1	2	3
4	5	6
7	8	9

1 Ozone
2 Rosetta
3 Fort Douglas
4 Ludwig
5 Trent
6 Clarksville
7 Knoxville
8 Lee Mountain

ROAD CLASSIFICATION	
Expressway	Local Connector
Secondary Hwy	Local Road
Ramp	4WD
Interstate Route	US Route
FS Primary Route	FS Passenger Route
	FS High Clearance Route

Check with local Forest Service unit
for current travel conditions and restrictions.

HAGARVILLE, AR
2020

