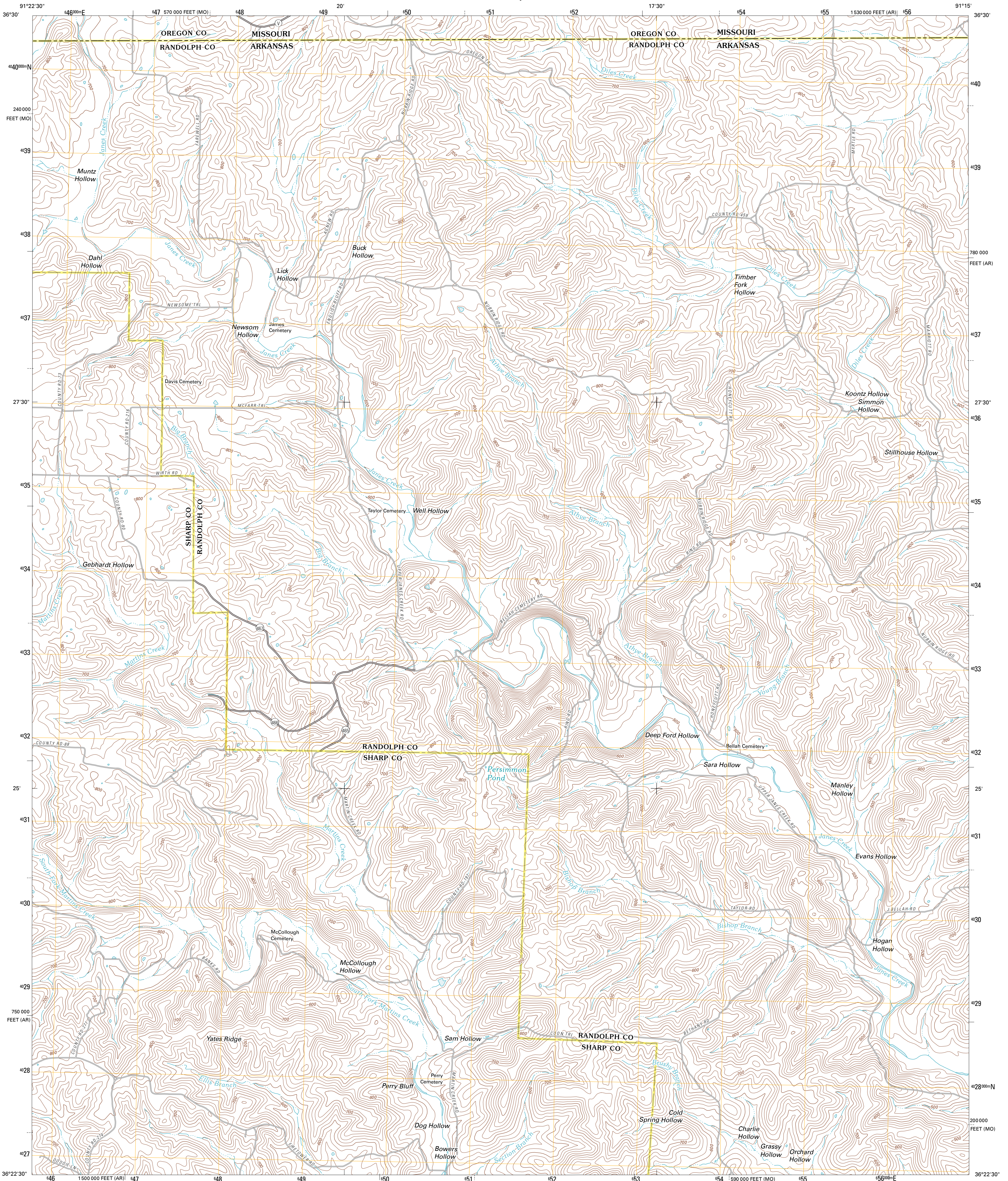




U.S. DEPARTMENT OF THE INTERIOR  
U. S. GEOLOGICAL SURVEY

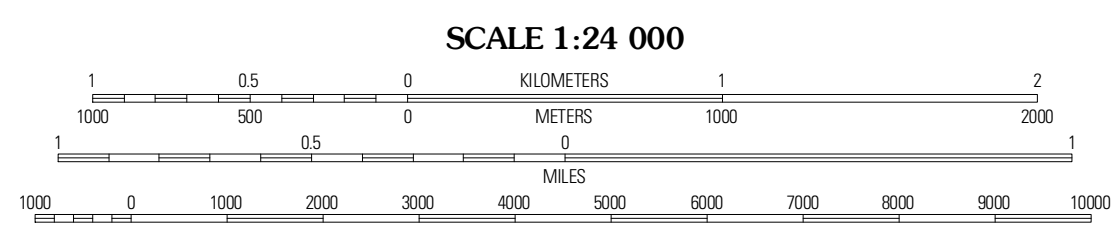
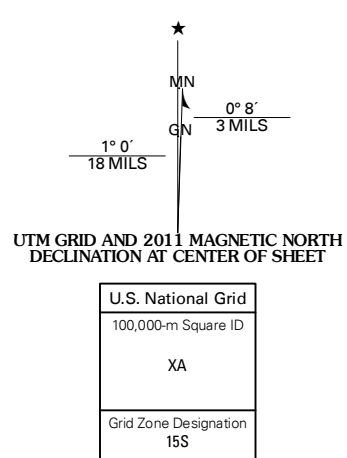


HARDY NE QUADRANGLE  
ARKANSAS-MISSOURI  
7.5-MINUTE SERIES



Produced by the United States Geological Survey  
North American Datum of 1983 (NAD83)  
World Geospatial System of 1983 (WGS84) Projection and  
1 000-foot ticks: Arkansas Coordinate System of 1983  
(north zone), Missouri Coordinate System of 1983 (east zone)

Imagery: NADP, August 2009  
Roads: 2006-2010 Tele Atlas  
Names: GNS, 2010  
Hydrography: National Hydrography Dataset, 2009  
Contours: National Elevation Dataset, 1999  
Boundaries: Census, IBWC, IBC, USGS, 1972 - 2010



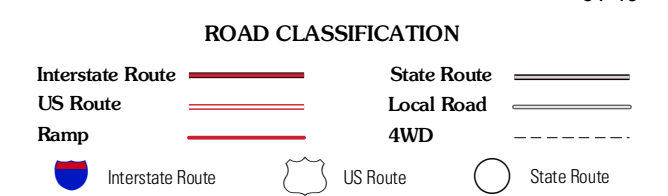
CONTOUR INTERVAL 20 FEET  
NORTH AMERICAN VERTICAL DATUM OF 1988

This map was produced to conform with version 0.5.10 of the USGS US Topo Product Standard. A metadata file associated with this product is draft version 0.5.16



Couch	Myrtle	Billmore
Werth	Hardy NE	Dalton
Hardy	Willford	Revsden Springs

ADJOINING 7.5 QUADRANGLES



HARDY NE, AR-MO  
2011