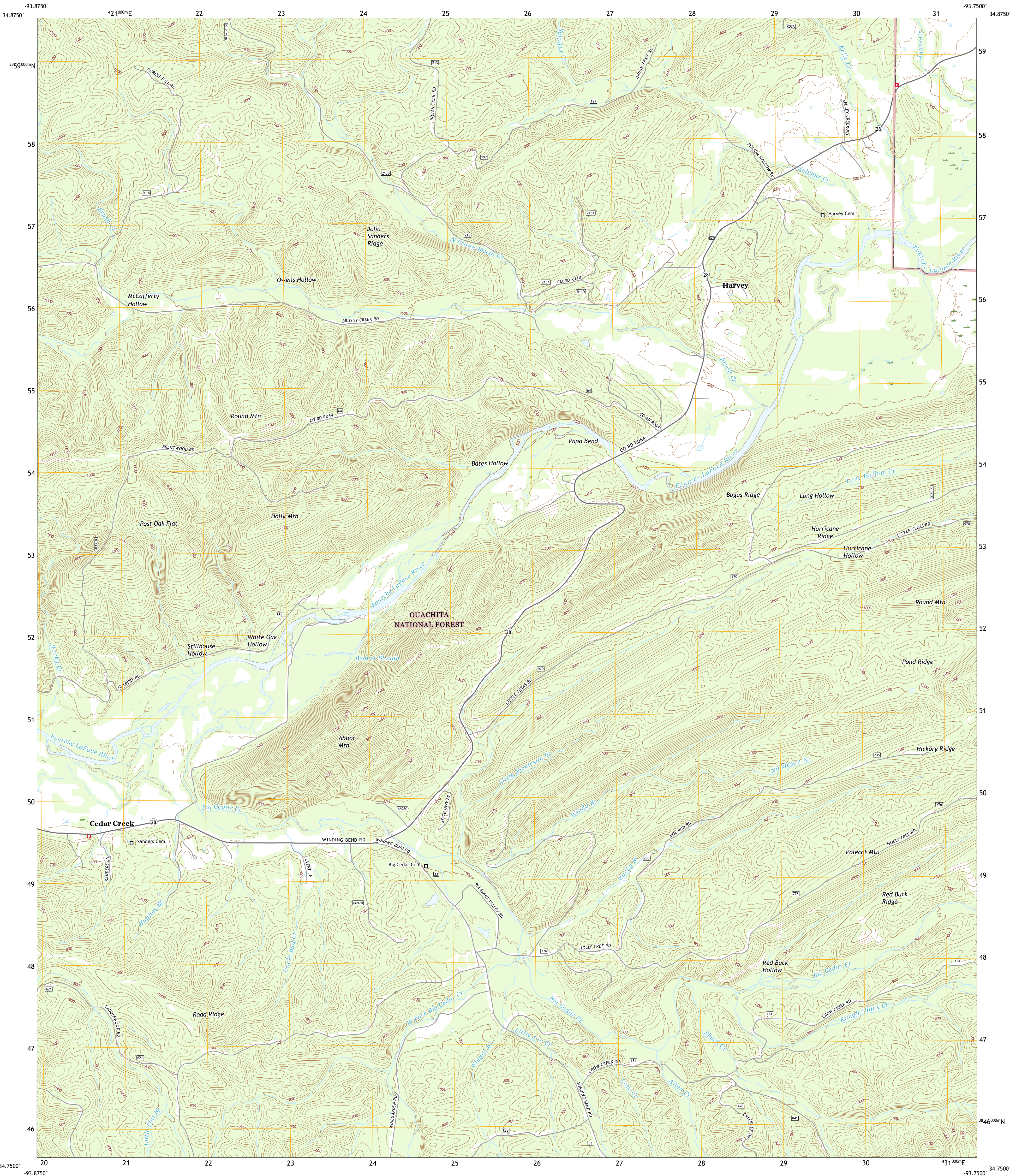




U.S. DEPARTMENT OF THE INTERIOR
U.S. GEOLOGICAL SURVEY

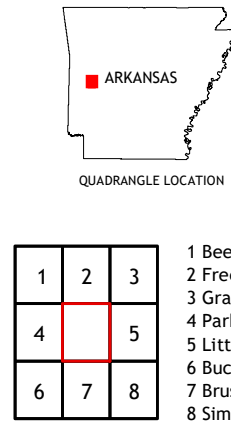
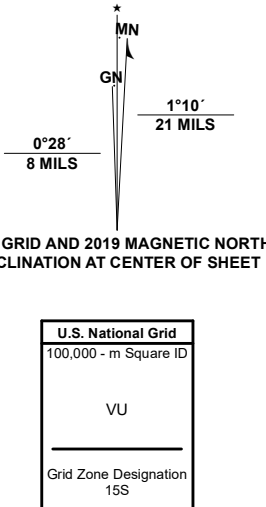


HARVEY QUADRANGLE
ARKANSAS - SCOTT COUNTY
7.5-MINUTE SERIES



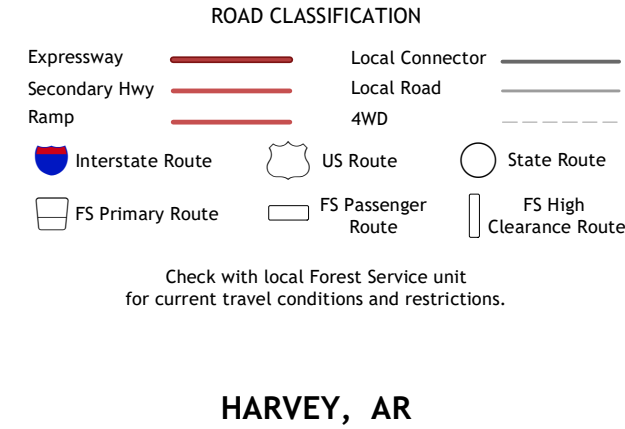
Produced by the United States Geological Survey
North American Datum of 1983 (NAD83)
World Geodetic System of 1984 (WGS84). Projection and
1 000-meter grid: Universal Transverse Mercator, Zone 15S
This map is not a legal document. Boundaries may be
generalized for this map scale. Private lands within government
reservations may not be shown. Obtain permission before
entering private lands.

Imagery.....NAIP, September 2017 - November 2017
Roads.....U.S. Census Bureau, Not Available
Roads within US Forest Service Lands.....FSTopo Data
with limited Forest Service updates, 2014 - 2017
Names.....GNS, 1980 - 2020
Hydrography.....National Hydrography Dataset, 1899 - 2018
Contours.....National Elevation Dataset, 2018
Boundaries.....Multiple sources; see metadata file 2018 - 2019
Public Land Survey System.....BLM, 2018
Wetlands.....FWS National Wetlands Inventory 1983 - 1985



1	2	3
4	5	6
7	8	9

1 Bee Mountain
2 Freedom Mountain
3 Gravely
4 Parks
5 Little Texas
6 Buck Knob
7 Brushy Creek Mountain
8 Sims



HARVEY, AR
2020

