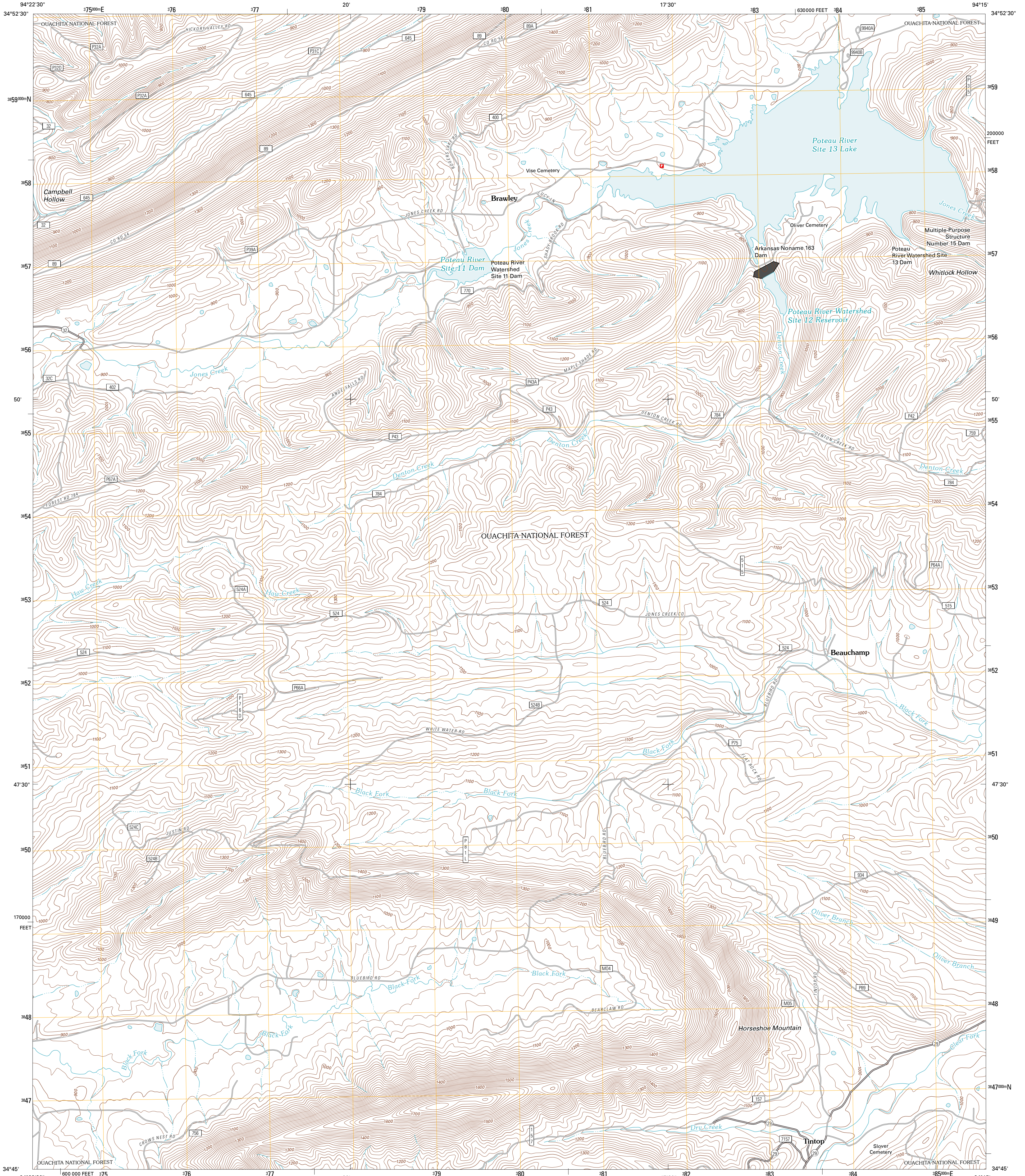




U.S. DEPARTMENT OF THE INTERIOR
U. S. GEOLOGICAL SURVEY

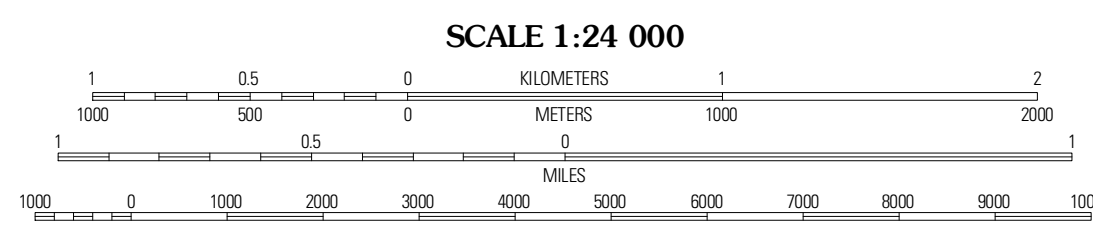
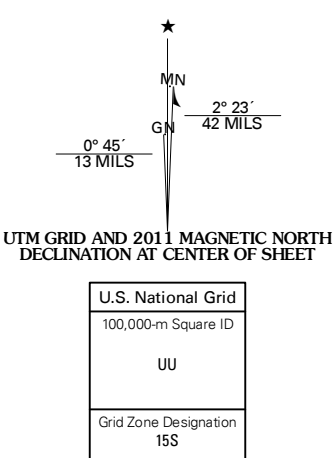


HORSESHOE MOUNTAIN QUADRANGLE
ARKANSAS-SCOTT CO.
7.5-MINUTE SERIES



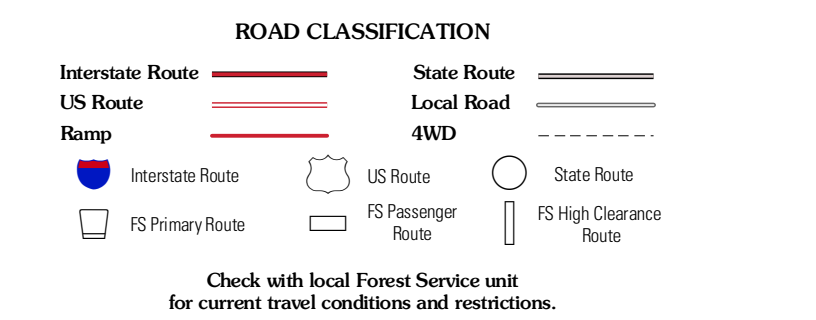
Produced by the United States Geological Survey
North American Datum of 1983 (NAD83)
World Geodetic System of 1984 (WGS84). Projection and
1 000-foot grid: Universal Transverse Mercator, Zone 15S
10 000-foot ticks: Arkansas Coordinate System of 1983
(north zone)

Imagery:.....NAIP, September 2009
Roads:.....©2006-2010 Tele Atlas
Roads within US Forest Service Lands:.....FS Topo Data
with limited Forest Service updates, 2009
Names:.....GNIS, 2010
Hydrography:.....National Hydrography Dataset, 2009
Contours:.....National Elevation Dataset, 2003
Boundaries:.....Census, IBWC, IBC, USGS, 1972 - 2010



Bates	Cauthron	Hon
Loving	Horseshoe Mountain	Peanut Mountain
Mountain Fork	Rich Mountain	Acorn

ADJOINING 7.5' QUADRANGLES



CONTOUR INTERVAL 20 FEET
NORTH AMERICAN VERTICAL DATUM OF 1988

This map was produced to conform with version 0.5.10
of the USGS US Topo Product Standard.
A metadata file associated with this product is draft version 0.5.16

HORSESHOE MOUNTAIN, AR
2011