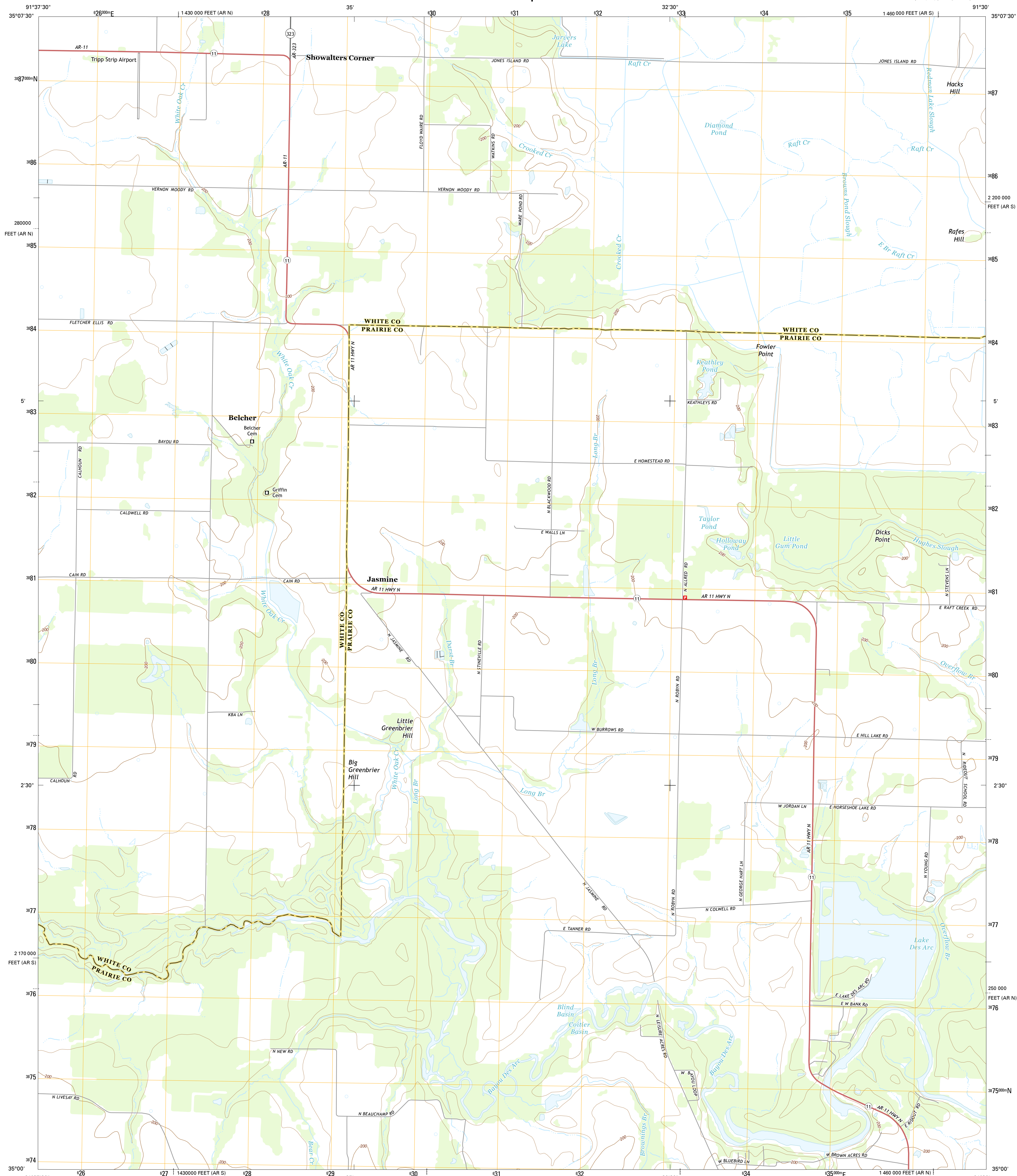




U.S. DEPARTMENT OF THE INTERIOR  
U.S. GEOLOGICAL SURVEY



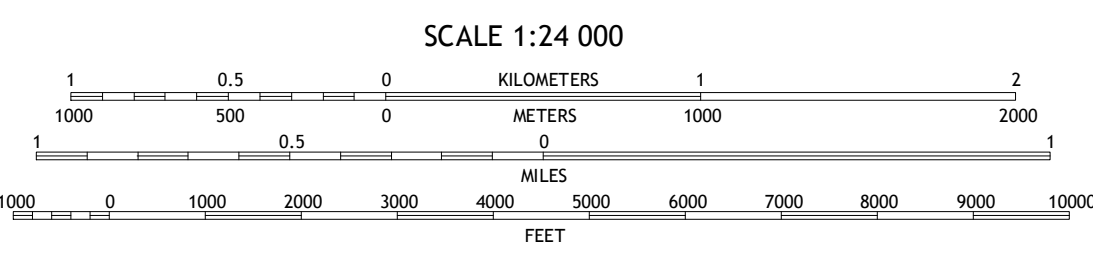
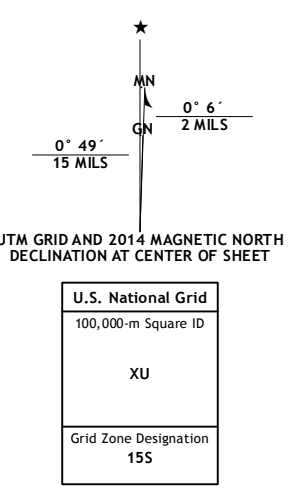
JASMINE QUADRANGLE  
ARKANSAS  
7.5-MINUTE SERIES



**Produced by the United States Geological Survey**  
 North American Datum of 1983 (NAD83)  
 World Geodetic System of 1984 (WGS84). Projection and  
 1 000-meter grid: Universal Transverse Mercator, Zone 15S  
 10 000-foot ticks: Arkansas Coordinate System of 1983 (south  
 and north zones)

This map is not a legal document. Boundaries may be  
 generalized for this map scale. Private lands within government  
 reservations may not be shown. Obtain permission before  
 entering private lands.

Imagery.....NAIP, July 2010  
 Roads.....HERE, ©2013  
 Names.....GNIS, 2013  
 Hydrography.....National Hydrography Dataset, 2010  
 Contours.....National Elevation Dataset, 2011  
 Boundaries.....Multiple sources; see metadata file 1972 - 2013  
 Public Land Survey System.....BLM, 2011



CONTOUR INTERVAL 10 FEET  
NORTH AMERICAN VERTICAL DATUM OF 1988

This map was produced to conform with the  
National Geospatial Program US Topo Product Standard, 2011.  
A metadata file associated with this product is draft version 0.6.16



**ROAD CLASSIFICATION**

	Expressway		Local Connector
	Secondary Hwy		Local Road
	Ramp		4WD
	Interstate Route		US Route
			State Route

ADJOINING QUADRANGLES

1	2	3
4	5	6
7	8	

1 Kensett  
2 West Point  
3 Georgetown  
4 Walker  
5 Gregory SW  
6 Hickory Plains  
7 Des Arc West  
8 Des Arc East

JASMINE, AR  
2014



NSN 7540-01-3353-1394  
NGA REF NO. U.S.G.S.X.2.4.K.2.2.1.1