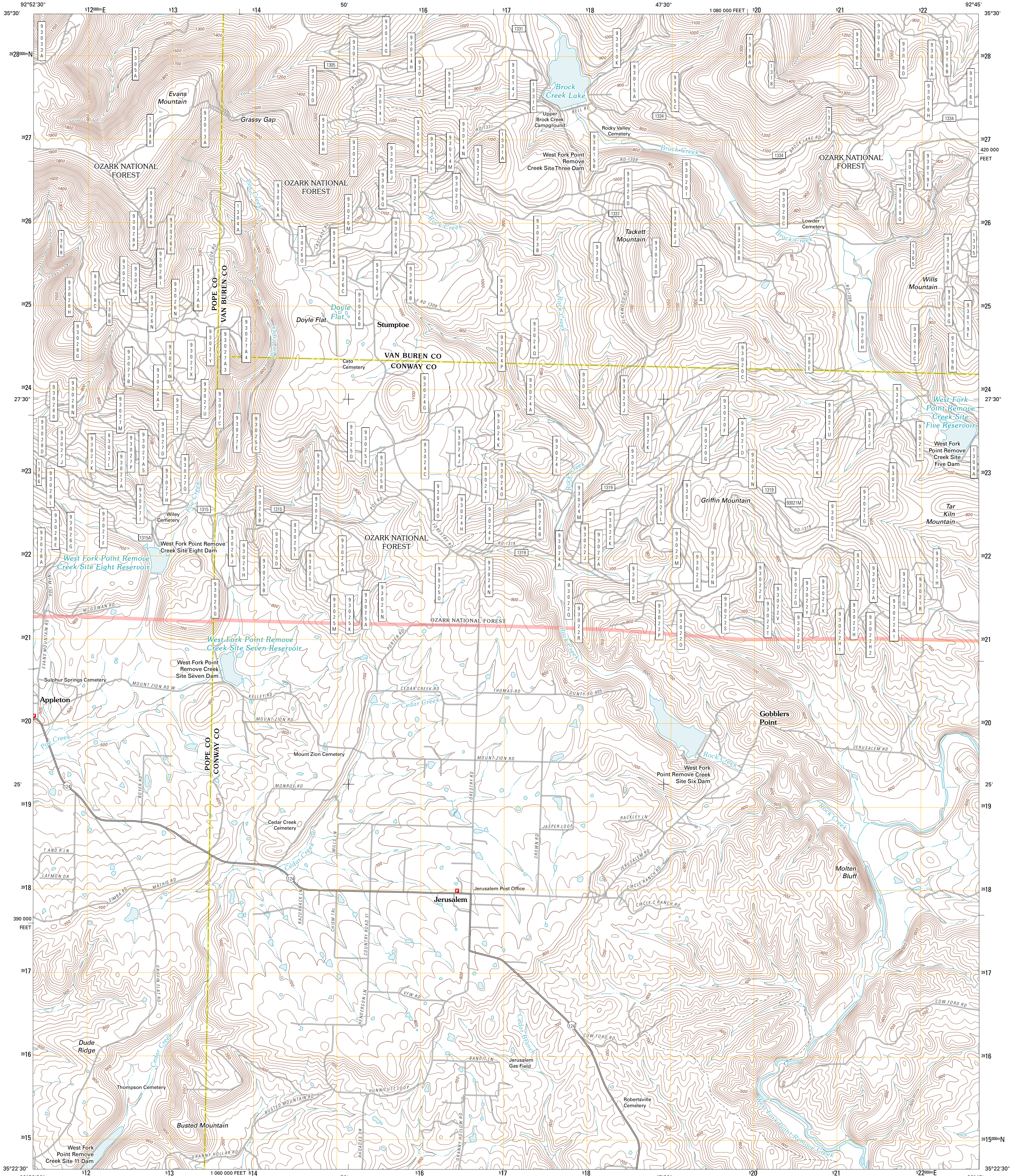




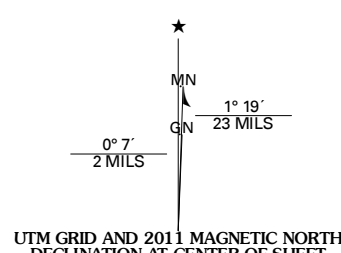
U.S. DEPARTMENT OF THE INTERIOR
U. S. GEOLOGICAL SURVEY



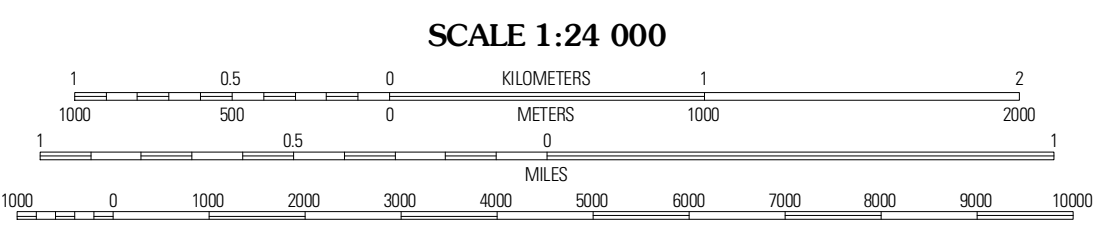
JERUSALEM QUADRANGLE
ARKANSAS
7.5-MINUTE SERIES



Produced by the United States Geological Survey
North American Datum of 1983 (NAD83)
World Geodetic System of 1984 (WGS84). Projection and
1 000-meter grid: Universal Transverse Mercator, Zone 15S
10 000-foot ticks: Arkansas Coordinate System of 1983
(north zone)



| | |
|-----------------------|---------------------|
| U.S. National Grid | 100,000-m Square ID |
| WV | |
| Grid Zone Designation | 15S |



CONTOUR INTERVAL 20 FEET
NORTH AMERICAN VERTICAL DATUM OF 1988

This map was produced to conform with version 0.5.10
of the USGS US Topo Product Standard.
A metadata file associated with this product is draft version 0.5.16



QUADRANGLE LOCATION

| | | |
|---------|-------------|------------|
| Solo | Lost Corner | Rex |
| Factor | Jerusalem | Cleveland |
| Morland | Hartsville | Solghachia |

ROAD CLASSIFICATION

- Interstate Route
- US Route
- Ramp
- State Route
- Local Road
- 4WD
- Dashed State Route
- FS Primary Route
- FS Passenger Route
- FS High Clearance Route

Check with local Forest Service unit
for current travel conditions and restrictions.

JERUSALEM, AR
2011

ADJOINING 7.5' QUADRANGLES