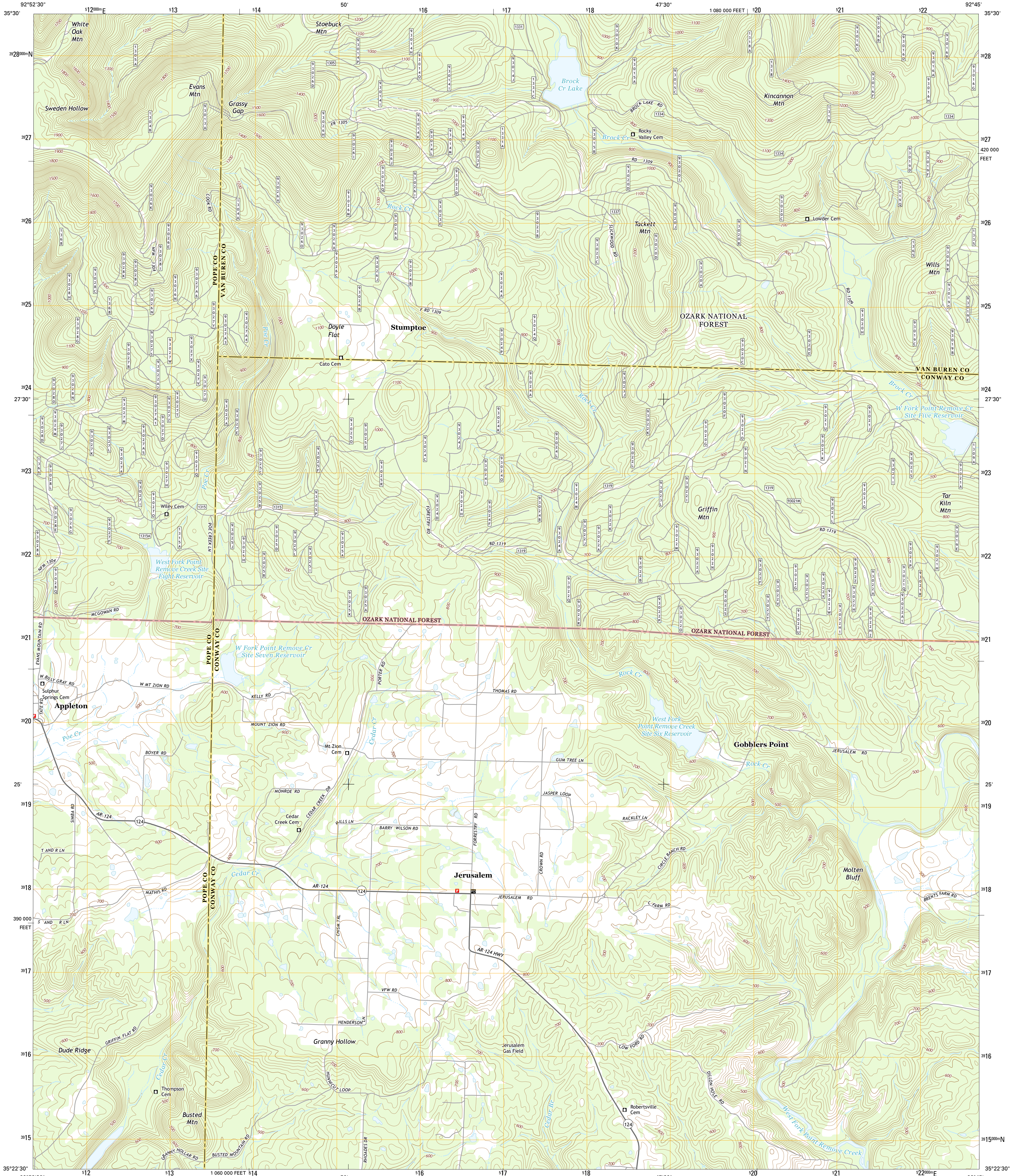




U.S. DEPARTMENT OF THE INTERIOR  
U.S. GEOLOGICAL SURVEY



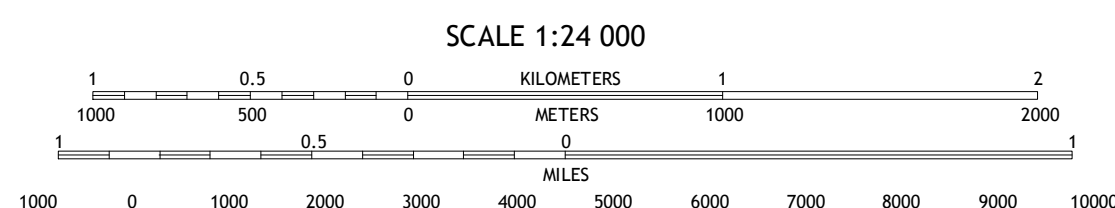
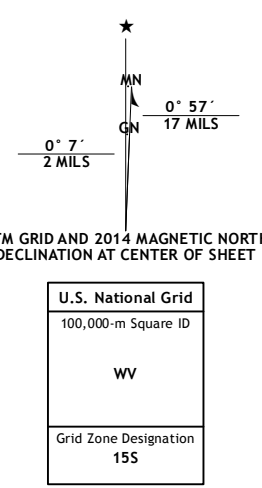
JERUSALEM QUADRANGLE  
ARKANSAS  
7.5-MINUTE SERIES



Produced by the United States Geological Survey  
North American Datum of 1983 (NAD83)  
World Geodetic System of 1984 (WGS84). Projection and  
1 000-meter grid: Universal Transverse Mercator, Zone 15S  
10 000-foot ticks: Arkansas Coordinate System of 1983 (north  
zone)

This map is not a legal document. Boundaries may be  
generalized for this map scale. Private lands within government  
reservations may not be shown. Obtain permission before  
entering private lands.

Imagery.....NAIP, August 2010  
Roads.....HERE, ©2013  
Roads within US Forest Service Lands.....FSTopo Data  
with limited Forest Service updates, 2013  
Names.....GNIS, 2013  
Hydrography.....National Hydrography Dataset, 2010  
Contours.....National Elevation Dataset, 2000  
Boundaries.....Multiple sources; see metadata file 1972 - 2013  
Public Land Survey System.....BLM, 2011



CONTOUR INTERVAL 20 FEET  
NORTH AMERICAN VERTICAL DATUM OF 1988

This map was produced to conform with the  
National Geospatial Program US Topo Product Standard, 2011.  
A metadata file associated with this product is draft version 0.6.16



- ROAD CLASSIFICATION**
- Expressway
  - Secondary Hwy
  - Ramp
  - Interstate Route
  - FS Primary Route
  - Local Connector
  - Local Road
  - 4WD
  - US Route
  - FS Passenger Route
  - FS High Route
  - Clearance Route
  - State Route

1	2	3
4	5	6
7	8	

ADJOINING QUADRANGLES

- 1 Solo
  - 2 Lost Corner
  - 3 Rex
  - 4 Hector
  - 5 Cleveland
  - 6 Moreland
  - 7 Hattenville
  - 8 Solgohachia
- Check with local Forest Service unit  
for current travel conditions and restrictions.

JERUSALEM, AR  
2014

