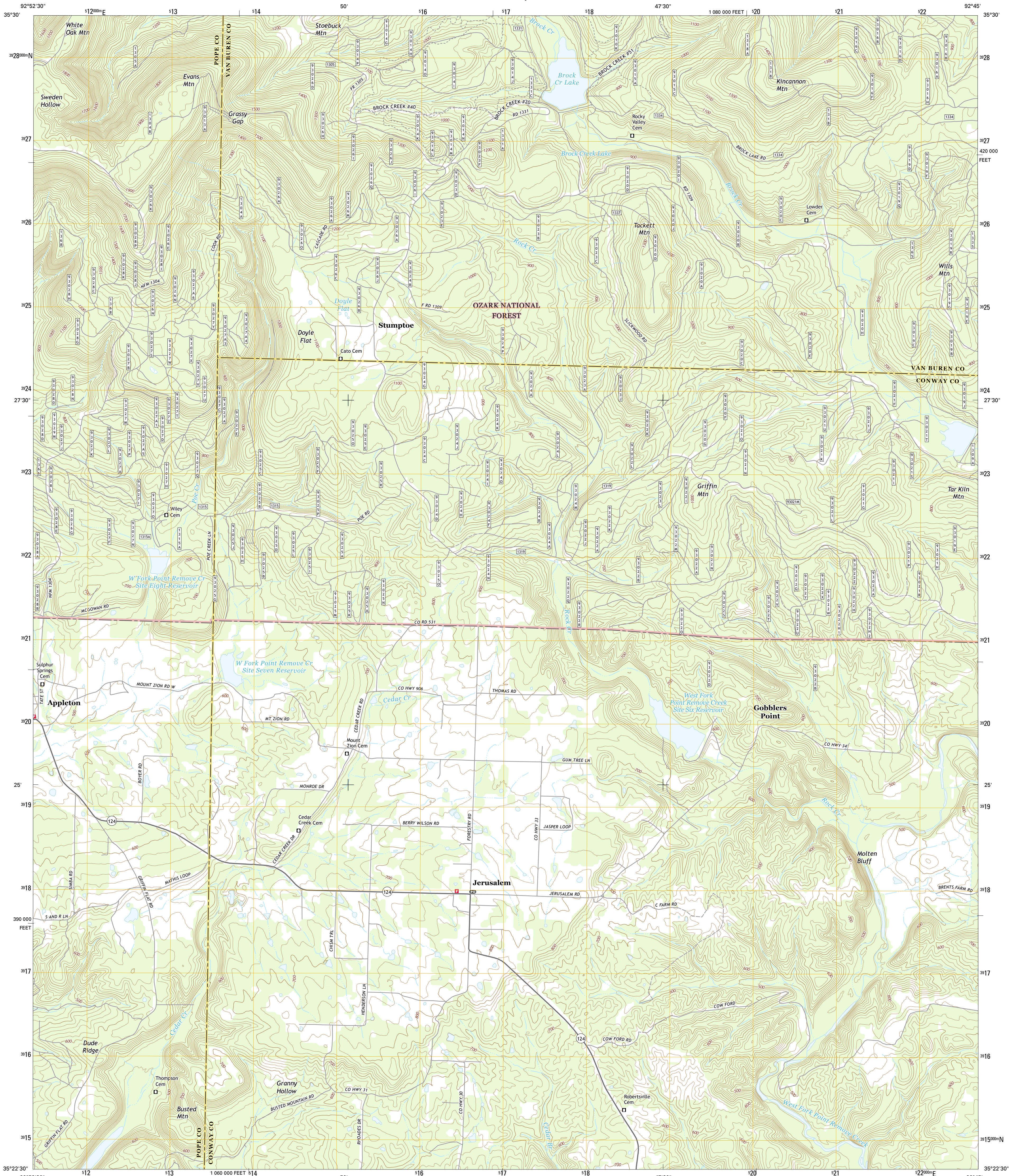




U.S. DEPARTMENT OF THE INTERIOR
U.S. GEOLOGICAL SURVEY



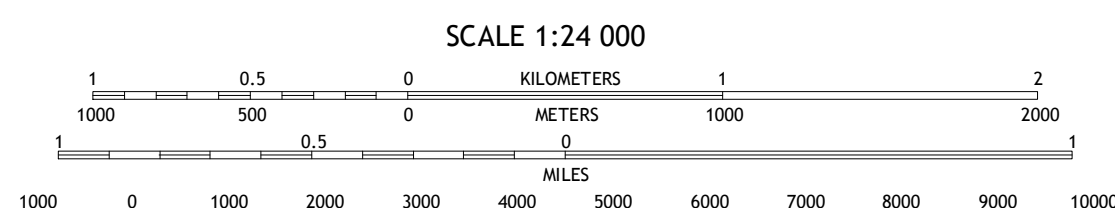
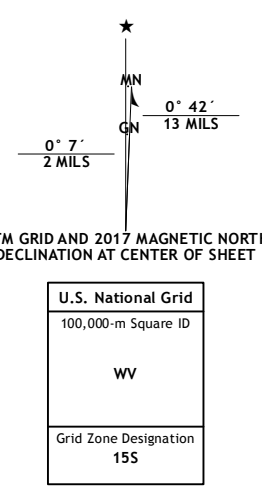
JERUSALEM QUADRANGLE
ARKANSAS
7.5-MINUTE SERIES



Produced by the United States Geological Survey
North American Datum of 1983 (NAD83)
World Geodetic System of 1984 (WGS84). Projection and
1 000-meter grid: Universal Transverse Mercator, Zone 15S
10 000-foot ticks: Arkansas Coordinate System of 1983 (north
zone)

This map is not a legal document. Boundaries may be
generalized for this map scale. Private lands within government
reservations may not be shown. Obtain permission before
entering private lands.

Imagery.....NAIP, December 2015
Roads.....U.S. Census Bureau, 2015
Roads within US Forest Service Lands.....FSTopo Data
with limited Forest Service updates, 2012-2016
Contours.....National Elevation Dataset, 2016
Hydrography.....National Hydrography Dataset, 2015
Boundaries.....Multiple sources; see metadata file 1072-2016
Public Land Survey System.....BLM, 2015
Wetlands.....FWS National Wetlands Inventory 1977-2014



CONTOUR INTERVAL 20 FEET
NORTH AMERICAN VERTICAL DATUM OF 1988

This map was produced to conform with the
National Geospatial Program US Topo Product Standard, 2011.
A metadata file associated with this product is draft version 0.6.19



- ROAD CLASSIFICATION**
- Expressway
 - Secondary Hwy
 - Ramp
 - Interstate Route
 - FS Primary Route
 - Local Connector
 - Local Road
 - 4WD
 - US Route
 - FS Passenger Route
 - FS High Route
 - State Route
 - Clearance Route
- Check with local Forest Service unit
for current travel conditions and restrictions.

1	2	3
4	5	6
7	8	

ADJOINING QUADRANGLES

- 1 Solo
- 2 Lost Corner
- 3 Rex
- 4 Hector
- 5 Cleveland
- 6 Moreland
- 7 Hattenville
- 8 Solgohachia

JERUSALEM, AR
2017



NSN 7540-01-080-4140
GSA GEN. REG. NO. 27
U.S. G.S. X 24 02 070
NSA REF. NO.