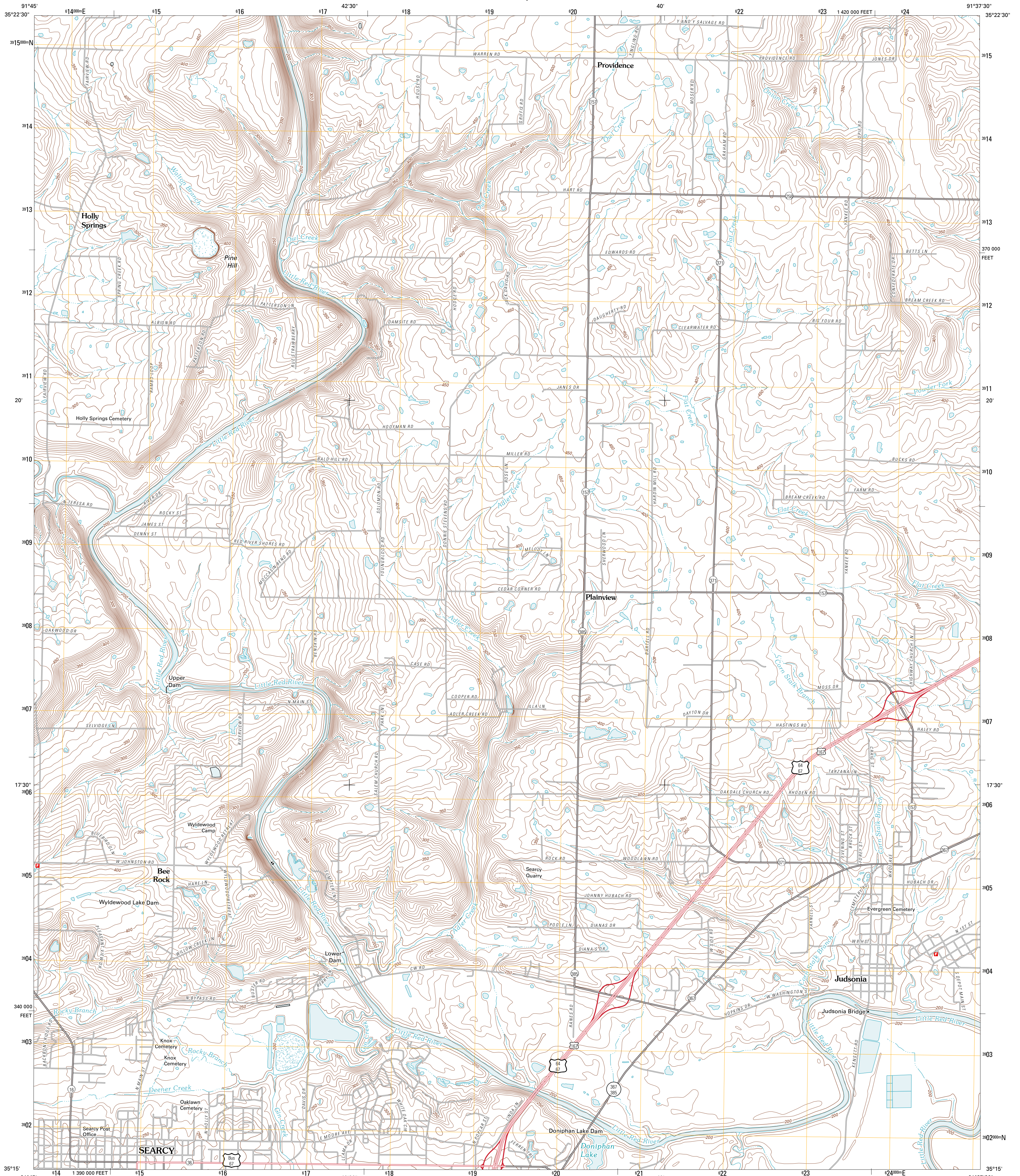




U.S. DEPARTMENT OF THE INTERIOR  
U. S. GEOLOGICAL SURVEY



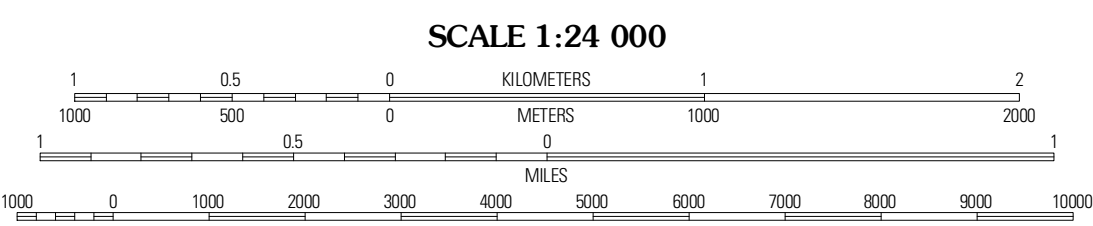
JUDSONIA QUADRANGLE  
ARKANSAS-WHITE CO.  
7.5-MINUTE SERIES



Produced by the United States Geological Survey  
North American Datum of 1983 (NAD83)  
World Geodetic System of 1984 (WGS84), Projection and  
1 000-foot ticks: Arkansas Coordinate System of 1983  
(north zone)

UTM GRID AND 2011 MAGNETIC NORTH  
DECLINATION AT CENTER OF SHEET

U.S. National Grid	18Q
100,000-m Square ID	XV
Grid Zone Designation	18Q



ROAD CLASSIFICATION

Interstate Route	State Route
US Route	Local Road
Ramp	4WD

QUADRANGLE LOCATION

Pangburn	Steprock	Veget Ridge
Leflore	Judsonia	Bald Knob
Gamer	Kensett	West Point

JUDSONIA, AR  
2011

CONTOUR INTERVAL 10 FEET  
NORTH AMERICAN VERTICAL DATUM OF 1988  
This map was produced to conform with version 0.5.10  
of the USGS US Topo Product Standard.  
A metadata file associated with this product is draft version 0.5.16